

Nissen ANGUS^{INC}



Annual Production Sale

WEDNESDAY

APRIL 4, 2018

BLAINE COUNTY FAIRGROUNDS

CHINOOK, MT

LUNCH AT 11:30 • SALE AT 1:00

WITH SPECIAL GUEST SCHMITT ANGUS

ANNUAL PRODUCTION SALE
Wednesday - April 4, 2018
Blaine County Fairgrounds • Chinook, MT
Lunch at 11:30 • Sale at 1:00

SALE DAY PHONES

Jeff's Cell 406-949-1101
Christie's Cell 406-262-4125
Lane's Cell 406-390-2275

SALE DAY CONFERENCE CALL

Bill Pelton will be conducting a sale day conference call for any buyers that are unable to attend the sale. Please see the ad on this page for instructions.

AUCTIONEER

Roger Jacobs 406-698-7686

SPECIAL REPRESENTATIVES

Kurt Kangas 406-366-4190
Jeff Thomas 406-581-8859
Bill Pelton 406-671-5100

SIGHT UNSEEN GUARANTEE

Absentee bidding can be made in confidence with any representative, the auctioneer or directly with Nissen Angus Inc. or Schmitt Angus. We guarantee 100% satisfaction on all purchases.

INSPECTION

The bulls are on feed and available for viewing at Hould Bull Development Center, located at 5867 Hwy 363 southwest of Malta, MT. They will be available for inspection at the Blaine County Fairgrounds in Chinook, MT starting the afternoon of Monday, April 2nd.

Sale Day Conference Call



Our goal is to have you in the seats but if you can't make it on sale day, we're fixin' to get you "on the line!"

Easy as 1~2~3
Call BILL PELTON in Advance to...

1. Pre-Register for your buyer number
2. Receive the toll-free Call in Number & Pin
3. Get last minute instructions for the call



**Pelton
Livestock**
Marketing & Consulting

www.billpelton.com
bill@billpelton.com | 406-671-5100



HEALTH

All bulls have been semen tested and given a complete breeding physical by Dr. Bob Schmitt of Chinook Veterinary Clinic, (406)357-2850. They have had all necessary immunizations and vaccinated with Fusoguard for footrot, Maxi/Guard for pinkeye and tested negative for BVD-PI.

TERMS AND CONDITIONS

This sale is being conducted under the suggested sale terms and conditions adopted by the American Angus Association. Announcements from the auction block take precedence over the information in this catalog. Settlement must be at time of sale unless prior arrangements have been made with the owners.

SALE ORDER

Bulls will sell in catalog order.

RETAINED INTEREST

Nissen Angus Inc. and Schmitt Angus are retaining 1/3 revenue share on every bull sold in this sale. This allows for the right to share in the collection of semen and the right to share semen and certificate revenue should the opportunity arise. Full possession and full salvage value sells on all bulls.

TRUCKING AND DELIVERY

We will offer free delivery within Montana on all bulls purchased. Further distances will be billed at cost. **Buyers who pick up their bulls at the sale site on sale day or the day after will be given a \$50 rebate per bull.**

PERFORMANCE INFORMATION

EPDs are current as of March 8, 2018. Updated EPDs can be viewed online at www.angus.org. All bulls selling were i50K tested and their EPDs are genomically enhanced. The spring bulls were ultrasounded for carcass merit by AAA certified technician, Sonja Gregory.

ACCOMADATIONS

Chinook Motor Inn 406-357-2248
Bear Paw Court 406-357-2221

AIRPORT

Edgar G. Obie Airport - Located on the west side of Chinook. Please call 406-357-2643 in advance to make arrangements

LIABILITY

All persons who attend the sale do so at their own risk. Nissen Angus Inc, Schmitt Angus and all other sale staff assume no liability, legal or otherwise.

VIDEOS OF BULLS ARE AVAILABLE AT

www.nissenangus.com

www.billpelton.com

PLEASE BRING THIS CATALOG
WITH YOU ON SALE DAY

CONNECT WITH US





Jeff & Christie Nissen
406.357.2643 Home
406.949.1101 Jeff's Cell
406.262.4125 Christie's Cell
info@nissenangus.com
www.nissenangus.com

Greetings Fellow Producers!

We'd like to invite you to our Annual Production Sale on April 4, 2018 at the Blaine County Fairgrounds in Chinook, MT. This year our sale offering includes 20 fall yearling bulls and 50 spring yearling bulls. **The bulls will be available at the fairgrounds for you to view starting on the afternoon of Monday, April 2nd.**

Considering the dry, hot summer we had, we were pleased with how this year's set of bulls performed. This year the spring calves were weaned on September 22nd and as a group averaged over 750 lbs - doing so on just native grass and mother's milk - NO CREEP. As we work on continuing to grow our herd, we are focusing on mother cows that exhibit performance, structural correctness, strong maternal traits and carcass ability - all in a low-input, practical package. We are working hard to provide our customers with low maintenance, highly functional cattle that perform and pay in pounds. Our customer's success is a direct reflection of our program's success and we place a big emphasis on making sure our customers are happy with their purchases.

To provide you with the most predictable and accurate selection tools, we once again submitted i50K testing on every bull offered in the sale. These genomic-enhanced EPDs offer increased predictability and valuable insight for the selection process. Along with the i50K test, all the spring bulls were scanned for carcass merit.

The bulls are on feed at Hould Bull Development Center west of Malta, MT and available for you to view at any time. All the bulls have been performance and fertility tested. The bulls have been fed a high roughage ration to ensure soundness and longevity. All have been given Fusogard to help prevent footrot, Maxi/Guard for pinkeye and tested negative for BVD-PI. This winter was brutal for everyone and we can't thank Bruce, Linda and their crew enough for the great care they gave these bulls. They are great to work with and always try to accommodate everyone's schedules and deadlines. It gives us a great peace of mind knowing our cattle are in such great hands.

Lane, Taryn and Scott Schmitt of Schmitt Angus continue to be our special guests and offer some of their own bulls for sale. Barb Korenjak of Corey A Ranch in Oregon continues to partner on some cows with us and any bulls resulting from those cows will be offered in the sale. The Schmitt and Korenjak families are good friends and we are fortunate to have the opportunity to work with them.

We are blessed to be surrounded by family and friends who support us. We could not do what we love to do without them. Sale time is one of our most favorite times of the year and it is truly a family affair. We aren't always able to get together as a family on holidays, but every year our family comes together during sale time. Everyone does their part in helping us put on the sale and it ends up being our version of holiday family time. We enjoy catching up with friends and family on sale day and invite you to join us for lunch and stay for our "friends and family" social after the sale.

Please feel free to call us if you would like additional information on the bulls or if you have any questions about our program. We love to chat - especially about our cattle and our kids. Chances are you won't hear about one without hearing about the other!

Our sincere thanks for your friendship and support throughout the years - we look forward to working with you for many years to come. Please stop by and view the sale offering and join us for lunch on April, 4th. See you then!

Jeff, Christie, Charley & Tyson Nissen



Bull Mortality & Loss of Use Insurance

Nissen Angus has arranged for
Novich Insurance Agency
to make available Mortality/Loss of Use Coverage for
Nissen Angus bulls and Schmitt Angus bulls sold in the
April 4,2018 sale.
Terms are as follows:

Values	Not to exceed purchase price
Term	12-month policy term
Premium	10.3% of the purchase prices for both mortality and loss of use 5.5% of the purchase price for full mortality only NISSEN ANGUS PAYS HALF OF THE PREMIUM FOR YOU
Coverage	100% mortality payout 80% loss of use claim payout



XL CATLIN

Tyler Holland
Novich Insurance Agency
406-684-5264
tylerholland@3rivers.net



Be confident your Angus-sired calves are receiving the premiums they deserve by enrolling in AngusSource®, the USDA process verified age-and-source program offered by the American Angus Association.

AngusSource calves commanded a \$2.56 per hundredweight (cwt.) premium¹ over non-verified calves. On a typical lot of 650-pound steers, you've got

nearly \$750 to add to your bottom line. Call AngusSource at 816.383.5100 or download an enrollment form at www.angus.org/angusource to help manage your risk in today's market.

If you're among the first 50 cattle producers to enroll 100 head of Angus-sired calves in 2017, you will receive a complimentary VetGun™.



ANGUS
THE BUSINESS BREED

American Angus Association®
3201 Frederick Avenue | Saint Joseph, MO 64506 | 816.383.5100 | www.angus.org

¹Age and Source Verification Terms and Price Effects: Superior Livestock, 2010-2016, Kenneth G. Oakes, DVM, PhD, Kansas State University.

Donation Lot

Each year we donate a percentage of the sales from a designated lot towards a cause that is near and dear to our hearts.

Cancer hits really close to home with our family - Jeff lost both his parents to cancer and throughout the years, we have lost other loved ones to the disease.

We have also watched family members and friends battle and win their fight against cancer.

This year's donation lot is Lot #28

This year we have chosen Wacee Simenson and his family as the recipients. In early February of this year, 7 year old Wacee was diagnosed with T-Cell lymphoblastic lymphoma.

From the beginning, we have watched and cheered Wacee on in his fight against cancer and we are amazed at his family's strength, courage and love.

We are excited to say that Wacee is winning the fight and is kicking cancer's butt! Wacee and his family have a long road ahead of them with continued treatments and long distance travel. We are honored to donate and support this young man and his family as they continue on their journey of winning the fight against cancer!



BW: Actual birth weight expressed in pounds.

Actual WW: Actual weaning weight taken right off the cow, expressed in pounds.

Adj 205: Standardized weaning weight adjusted to calf age of 205 days and mature dam equivalent.

Adj. 365: Standardized yearling weight adjusted to calf age of 365 days and mature dam equivalent.


Scrotal: Actual scrotal measurement, expressed in centimeters, taken 3/1/2017.

%IMF: Percentage of fat in the ribeye area muscle (similar to marbling). The ultrasound field technician collects four images and the values generated by the interpreting software are averaged for an overall %IMF. Marbling directly contributes to beef palatability.

REA: Area of the longissimus muscle, measured in square inches. The trait is moderately to highly heritable and gives an indication of overall carcass muscling.

Rib Fat: An external fat measurement taken between the 12th and 13th ribs, measured in inches.

Rump Fat: An external lmeasurement taken between the hooks and pins, measured in inches. The rump fat and rib fat measurements are used to determine the overall external body fat.

LOT 1 **NA RECHARGE 750** 

DOB: 01/31/17 • Reg: 18964445 • Tattoo: 750

BW	94	Rito 707 of Ideal 3407 7075	%IMF	3.67
Act WW	826	S A V Recharge 3436	%IMF RATIO	80
Adj 205	758	S A V Blackcap May 4136	REA	12
Adj 365	1270	KG Onward 6345	REA RATIO	90
Scrotal	38	NA Miss Wyona 0064	RIB FAT	0.29
		NA Miss Wyona Frontier 5531	RUMP FAT	0.35

CED	BW	WW	Milk	YW	SC	Marb	RE	Fat	\$W	\$F	\$G	\$B
-2	+3.7	+59	+25	+101	+1.31	+0.08	+0.51	-0.022	+49.23	+45.08	+16.93	+94.87

Marb EPD: Expressed as a fraction of the difference in USDA marbling score of a sire's progeny compared to progeny of other sires.

RE EPD: Expressed in square inches, is a predictor of the difference in ribeye area of a sire's progeny compared to progeny of other sires.

Fat EPD: Expressed in inches, is a predictor of the differences in external fat thickness at the 12th rib (as measured between the 12th & 13th ribs) of a sire's progeny compared to progeny of other sires.

Calving Ease Direct (CED): Expressed as a difference in percentage of unassisted births, with a higher value indicating greater calving ease in first-calf heifers. It predicts the average difference in ease with which a sire's calves will be born when he is bred to first-calf heifers.

BW EPD: Expressed in pounds, is a predictor of a sire's ability to transmit birth weight to his progeny compared to that of other sires.

WW EPD: Expressed in pounds, is a predictor of a sire's ability to transmit weaning growth to his progeny compared to that of other sires.

Milk EPD: Is a predictor of a sire's genetic merit for milk and mothering ability as expressed in his daughters compared to daughters of other sires. In other words, it is that part of a calf's weaning weight attributed to milk and mothering ability.

WW EPD: Expressed in pounds, is a predictor of a sire's ability to transmit yearling growth to his progeny compared to that of other sires

SC EPD: Expressed in centimeters, is a predictor of the difference in transmitting ability for scrotal size compared to that of other sires.

\$Value Indexes: Reported in dollars per head, where a higher value is more favorable.

Weaned Calf Value (\$W): Expressed in dollars per head, is the expected average difference in future progeny performance for pre-weaning merit. \$W includes both revenue and cost adjustments associated with differences in birth weight, weaning direct growth, maternal milk and mature cow size.

Feedlot Value (\$F): Expressed in dollars per head, is the expected average difference in future progeny performance for postweaning merit compared to progeny of other sires.

Grid Value (\$G): Expressed in dollars per head, is the expected average difference in future progeny performance for carcass grid merit compared to progeny of other sires.

Beef Value (\$B): Expressed in dollars per head, is the expected average difference in future progeny performance for postweaning and carcass value compared to progeny of other sires. The \$B combines the contributions of \$F and \$G.

Reference Sires

Reference Sire

SAV RECHARGE 3436

+17633838 • 1/3/2013

Rito N Bar
 #RR Rito 707
 Eriskay of Rollin Rock 3
Rito 707 of Ideal 3407 7075
 #Ideal 1418 of 8103 4286
 Ideal 3407 of 1418 076
 Ideal 076 of 692 8375

#Sitz Traveler 8180
 #SAV 8180 Traveler 004
 Boyd Forever Lady 8003
SAV Blackcap May 4136
 #SAF 598 Bando 5175
 SAV May 2397
 #SAV May 7238



PRODUCTION						CARCASS				\$VALUES			
CED	BW	WW	MILK	YW	SC	CW	Marb	RE	Fat	\$W	\$F	\$G	\$B
+3	+2.6	+67	+25	+126	+1.44	+54	-.11	+.82	-.042	+59.15	+78.25	+8.09	+111.28

\$80,000 second lead bull from the 2014 SAV Sale. Goes back to foundation genetics, packed with performance and phenotype. His calves have proven to be quick starters with explosive growth and muscle capacity. Recharge is the cow-making kind. His calves have good feet and structural soundness along with natural thickness and fleshing ability.

Reference Sire

SAV REGISTRY 2831

+17318928 • 1/7/2012

Rito N Bar
 #RR Rito 707
 Eriskay of Rollin Rock 3
Rito 707 of Ideal 3407 7075
 #Ideal 1418 of 8103 4286
 Ideal 3407 of 1418 076
 Ideal 076 of 692 8375

#Bon View Bando 598
 #SAF 598 Bando 5175
 SAF Royal Lass 1002
SAV Madame Pride 0075
 #Leachman Right Time
 SAV Madame Pride 8264
 #SAR Cruzs Pride 8597



PRODUCTION						CARCASS				\$VALUES			
CED	BW	WW	MILK	YW	SC	CW	Marb	RE	Fat	\$W	\$F	\$G	\$B
+2	+2.8	+54	+13	+94	+1.11	+46	+.18	+.59	+.005	+33.60	+40.80	+19.23	+113.19

We wanted to go back to some foundation Angus genetics and we really like everything that Registry had to offer. He combines low birth weight with great muscle, deep rib and natural thickness. His calves are structurally correct, complete and easy on the eyes.

Reference Sire

S CHISUM 255

17298481 • 3/15/2012

Paws Up Alliance 9561
 S Alliance 3313
 Paws Up 9048 Emulation Ext
#S Chisum 6175
 S Eclipse 169
 #S Gloria 464
 #S Gloria 209

#HA Image Maker 0415
 #Shipwheel Chinook
 #Apex Eriskay 5506
#S Blossom 0278
 #R&S Expedition 1404
 #S Blossom 8378
 #S Blossom 4190



PRODUCTION						CARCASS				\$VALUES			
CED	BW	WW	MILK	YW	SC	CW	Marb	RE	Fat	\$W	\$F	\$G	\$B
+11	-0.3	+57	+25	+89	+.94	+35	+.18	+.49	+.033	+65.92	+33.21	+16.70	+91.48

We chose 255 for his calving-ease and cow-making ability. His natural muscle, excellent phenotype and structural soundness make him an attractive option.

Reference Sire

HILLTOP FINAL OPTION 5350

18282882 • 3/12/2015

PRODUCTION						CARCASS				\$VALUES			
CED	BW	WW	MILK	YW	SC	CW	Marb	RE	Fat	\$W	\$F	\$G	\$B
+1	+2.9	+66	+25	+113	+.91	+49	+.69	+.39	+.029	+63.46	+80.75	+34.04	+151.34

#Connealy Final Product
Carter Final Option 201
 #Carter Lacey 2189

#TC Franklin 619
#Hilltop Blackbird GP 09
 Hilltop Blackbird GP 8135

Reference Sire

GDAR CJD ALLIANCE 0714

16641034 • 1/31/2010

PRODUCTION						CARCASS				\$VALUES			
CED	BW	WW	MILK	YW	SC	CW	Marb	RE	Fat	\$W	\$F	\$G	\$B
+6	+0.1	+58	+36	+120	+.51	+53	+.57	+.41	+.034	+62.17	+89.75	+28.71	+145.80

Sitz RLS Alliance 7164
Sitz Alliance 7487
 #Sitz Blackbird 1900

#GDAR Game Day 449
GDAR CJD Kem 8602
 GDAR CJD Kem 6707

Reference Sire

NA ALLIANCE JCN 204Z

17644716 • 8/30/2012

PRODUCTION						CARCASS				\$VALUES			
CED	BW	WW	MILK	YW	SC	CW	Marb	RE	Fat	\$W	\$F	\$G	\$B
+9	+0	+53	+31	+102	+.48	+50	+.70	+.28	+.035	+56.68	+58.62	+31.44	+137.48

Sitz Alliance 7487
GDAR CJD Alliance 0714
 GDAR CJD Kem 8602

Sitz Onward 9007
NA Miss Image JCN 0009
 NA Miss Image Maker JN 5515

Reference Sire

SAV TEN SPEED 3022

17633563 • 2/17/2013

PRODUCTION						CARCASS				\$VALUES			
CED	BW	WW	MILK	YW	SC	CW	Marb	RE	Fat	\$W	\$F	\$G	\$B
+5	+1.6	+66	+20	+128	+85	+58	+74	+88	-.010	+52.76	+103.08	+44.98	+175.27

#Mytty In Focus
#AAR Ten X 7008 SA
#AAR Lady Kelton 5551

#SAV Bismarck 5682
#SAV Madame Pride 1134
SAV Madame Pride 9100

SCHMITT ANGUS REFERENCE SIRES

Reference Sire

SHIPWHEEL SIGNATURE 4541

18110618 • 3/8/2014

#Connealy Front Page 0228
#Kesslers Frontman R001
Kesslers Bell 0024

Boyd Signature 1014

Boyd Next Day 6010
Boyd Erica Dianna 9054
Boyd Erica Dianna 606

Shipwheel Black Pride 277

#SAV Final Answer 0035
#Connealy Right Answer 746
Happy Dell of Conanga 262
Sitz Rainmaker 6536
Shipwheel Black Pride 0146
Dr J Miss Apex I61

PRODUCTION						CARCASS				\$VALUES			
CED	BW	WW	MILK	YW	SC	CW	Marb	RE	Fat	\$W	\$F	\$G	\$B
+3	+1.7	+55	+26	+104	-.30	+37	-.12	+60	+0.009	+58.66	+70.23	+2.89	+95.32



4541 was our pick at the 2015 Shipwheel Cattle Company Sale. He was a standout against his contemporaries for performance, foot quality, and muscle expression. His dam was a moderate framed first calf heifer with an excellent udder. 4541's feet are as good as you will find, he's an excellent breeder, and his calves have a lot of vigor. We look forward to those qualities in his sons. Owned with MY Angus.

Reference Sire

SAV RECHARGE 3436

17633838 • 1/3/2013

PRODUCTION						CARCASS				\$VALUES			
CED	BW	WW	MILK	YW	SC	CW	Marb	RE	Fat	\$W	\$F	\$G	\$B
+3	+2.6	+67	+25	+126	+1.44	+54	-.11	+82	-.042	+59.15	+78.25	+8.09	+111.28

#RR Rito 707
Rito 707 of Ideal 3407 7075
Ideal 3407 of 1418 076

#SAV 8180 Traveler 004
SAV Blackcap May 4136
SAV May 2397

SAV Recharge is a full brother to SAV Resource. Recharge sires excellent, easy fleshing females with good feet and udders and bulls with muscle and performance.

WHY WE TEST WITH i50K FROM ZOETIS

Powered by i50K™ from Zoetis, our cattle sell with genomic-enhanced expected progeny differences (GE-EPDs).

With GE-EPDs, we're proud that customers like you can minimize risk in their investment — and add predictability and dependability to your cattle.

The benefits of buying i50K-tested bulls and heifers goes much farther than this, however. You'll know early on what that animal is likely to transmit to its offspring and potential for performance in the feedlot and on the rail. And, you can verify the sire of calves and replacement heifers produced by the bulls you buy from us — through GeneMax® Advantage™ and GeneMax® Focus™— to make better breeding and management decisions down the road.

Knowing an animal's potential. Continuous progress of your herd. That's why we test with i50K.

For more information:
Contact your Zoetis representative
Larry Gran
Cattle Genetics Specialist
(605) 641-3254
larry.gran@zoetis.com

All trademarks are the property of Zoetis Services LLC or a related company or a licensor unless otherwise noted. © 2016 Zoetis Services LLC. All rights reserved. i50K - 00034




Number of progeny records in conventional genetic evaluation needed to achieve the same accuracy as GE-EPDs powered by i50K

Trait	Progeny Equivalents
Heifer Pregnancy (HP)	22
Calving Ease Direct (CED)	24
Birth Weight (BW)	13
Milk	14
Docility (Doc)	11
Scrotal Circumference (SC)	16
Weaning Weight (WW)	19
Yearling Weight (YW)	24
Dry Matter Intake (RADG)	17
Yearling Height (YH)	12
Mature Weight (MW)	16
Carcass Weight (CW)	7
Marbling (Marb)	8
Ribeye Area (RE)	11
Fat Thickness (Fat)	12



LOT 1



LOT 1 NA RECHARGE 750 

DOB: 01/31/17 • Reg: 18964445 • Tattoo: 750

NA

Rito 707 of Ideal 3407 7075
S A V Recharge 3436
 S A V Blackcap May 4136


KG Onward 6345
NA Miss Wyona 0064
 NA Miss Wyona Frontier 5531

BW	94
Act WW	826
Adj 205	758
Adj 365	1270
Scrotal	38

%IMF	3.67
%IMF RATIO	80
REA	12
REA RATIO	90
RIB FAT	0.29
RUMP FAT	0.35

CED	BW	WW	Milk	YW	SC	Marb	RE	Fat	\$W	\$F	\$G	\$B
-2	+3.7	+59	+25	+101	+1.31	+0.08	+0.51	-0.022	+49.23	+45.08	+16.93	+94.87

- Individual Performance: WR@104 and YR@103
- Dam's Production: 5 WR@105, 2 YR@104, 6 %IMF@100
- Ranks in the top 10% of the breed for MW and Fat, top 20% for SC, top 25% for WW and top 30% for YW and MH.
- 3/4 brother to Lots 2 & 3

LOT 2 NA RECHARGE 752 

DOB: 02/01/17 • Reg: 18964450 • Tattoo: 752 • OHP

NA

Rito 707 of Ideal 3407 7075
S A V Recharge 3436
 S A V Blackcap May 4136

KG Onward 6345
NA Miss Samantha JCN 9930
 NA Miss Samantha 139 of JN

BW	92
Act WW	824
Adj 205	758
Adj 365	1281
Scrotal	35.5

%IMF	3.97
%IMF RATIO	87
REA	12.3
REA RATIO	93
RIB FAT	0.30
RUMP FAT	0.36

CED	BW	WW	Milk	YW	SC	Marb	RE	Fat	\$W	\$F	\$G	\$B
+8	+1.2	+51	+29	+97	+0.43	+0.15	+0.40	+0.009	+56.1	+45.36	+17.81	+79.17

- Individual Performance: WR@104 and YR@104
- Dam's Production: 5 WR@105, 3 YR@111, 4 REA@100
- Top 15% for Milk, top 25% for HP and \$W and top 35% for CED, YW and Doc.
- 3/4 brother to Lots 1 & 3



NA MISS SAMANTHA JCN 9930N- DAM OF LOT 2

LOT 2

LOT 3



LOT 3 NA RECHARGE CA 765

DOB: 02/04/17 • Reg: 18968093 • Tattoo: 765



BW	92
Act WW	830
Adj 205	770
Adj 365	1306
Scrotal	37.5

Rito 707 of Ideal 3407 7075
S A V Recharge 3436
 S A V Blackcap May 4136
 KG Onward 6345
Corey A Susie 9977
 Corey A Princess Susie 4204

%IMF	3.57
%IMF RATIO	79
REA	12.8
REA RATIO	96
RIB FAT	0.24
RUMP FAT	0.32

CED	BW	WW	Milk	YW	SC	Marb	RE	Fat	\$W	\$F	\$G	\$B
-1	+3.5	+67	+24	+119	+0.83	+0.07	+0.82	-0.028	+59.05	+72.66	+17.12	+132.85

- Individual Performance: WR@106 and YR@106
- Dam's Production: 6 WR@101, 4 YR@102, 5 %IMF@98, 5 REA@100
- Ranks in the top 4% for CW, top 10% for WW, YW, RE and Fat, top 15% for \$F, top 20% for \$W and \$YG and top 25% for \$B
- 3/4 brother to Lots 1 & 2



SAV Recharge 3436

SIRE TO LOTS 1-4, 22-26 & 38-40



LOT 4

LOT 4 NA RECHARGE 716

DOB: 01/24/17 • Reg: 18964446 • Tattoo: 716



BW	84
Act WW	793
Adj 205	715
Adj 365	1243
Scrotal	36

Rito 707 of Ideal 3407 7075
S A V Recharge 3436
 S A V Blackcap May 4136
 #S A V Iron Mountain 8066
NA Miss Empress 131
 NA Miss QV Time 215

%IMF	5.23
%IMF RATIO	114
REA	12.5
REA RATIO	93
RIB FAT	0.23
RUMP FAT	0.38

CED	BW	WW	Milk	YW	SC	Marb	RE	Fat	\$W	\$F	\$G	\$B
+0	+2.0	+53	+13	+91	+1.16	+0.15	+0.33	-0.016	+41.75	+38.03	+20.94	+67.80

- Individual Performance: WR@98 and YR@100
- Dam's Production: 5 BR@98, 5 WR@95, 4 YR@98, 5 %IMF@104
- Ranks in the top 10% of the breed for \$EN, top 15% for Fat, top 20% for \$YG and top 25% for SC

LOT 5



Lot 5 NA REGISTRY 728
 DOB: 01/27/17 • Reg: 18964395 • Tattoo: 728

BW	97
Act WW	880
Adj 205	822
Adj 365	1315
Scrotal	37

Rito 707 of Ideal 3407 7075
S A V Registry 2831
 S A V Madame Pride 0075

#H A Image Maker 0415
NA Miss Frontier Image JN 705
 #NA Miss Frontier Play 506JN

%IMF	4.52
%IMF RATIO	98
REA	13.2
REA RATIO	99
RIB FAT	0.30
RUMP FAT	0.36

CED	BW	WW	Milk	YW	SC	Marb	RE	Fat	\$W	\$F	\$G	\$B
-8	+4.4	+57	+25	+94	+0.93	+0.09	+0.24	+0.002	+44.70	+55.07	+8.88	+125.62

Lot 6 NA REGISTRY 774
 DOB: 02/11/17 • Reg: 18964387 • Tattoo: 774

BW	95
Act WW	844
Adj 205	798
Adj 365	1300
Scrotal	37.5

Rito 707 of Ideal 3407 7075
S A V Registry 2831
 S A V Madame Pride 0075

Sitz Onward 9007
NA Miss Cinda 1123
 #NA Miss Cinda 4114 YR

%IMF	2.96
%IMF RATIO	66
REA	14.3
REA RATIO	108
RIB FAT	0.31
RUMP FAT	0.31

CED	BW	WW	Milk	YW	SC	Marb	RE	Fat	\$W	\$F	\$G	\$B
+2	+2.4	+52	+22	+77	+0.61	+0.21	+0.40	+0.016	+46.13	+19.09	+19.16	+94.65

- Individual Performance; WR@113 and YR@107
- Dam's Production: 8 WR@101, 6 YR@98, 7 %IMF@95 and 7 REA@98
- Top 5% for MW, top 15% for CW and top 30% for WW and MH

- Individual Performance: WR@110 and YR@106
- Dam's Production: 5 WR@104, 2 YR@112, 5 REA@98
- Ranks in the top 10% for MW, top 30% for MH and top 35% for YH and \$EN
- 3/4 brother to Lot 8



LOT 6



NA REGISTRY 547 - FULL BROTHER TO LOT 6
 Sold as the the Lot 24 bull in our 2016 sale to Brett and Jill Tonne of Tonne Cattle Company in Ephrata, WA for \$6250.

Lot 7

NA REGISTRY 706



DOB: 01/22/17 • Reg: 18964449 • Tattoo: 706

%IMF	4.58
%IMF RATIO	100
REA	14.7
REA RATIO	109
RIB FAT	0.37
RUMP FAT	0.29

BW	90
Act WW	829
Adj 205	745
Adj 365	1204
Scrotal	40

Rito 707 of Ideal 3407 7075
S A V Registry 2831
 S A V Madame Pride 0075
 #Sitz Upward 307R
CCAR Pride X0882
 Basin Pride 7783

CED	BW	WW	Milk	YW	SC	Marb	RE	Fat	\$W	\$F	\$G	\$B
+4	+1.3	+53	+14	+84	+1.27	+0.39	+0.54	+0.034	+46.88	+24.38	+27.39	+98.47

- Individual Performance: WR@102 and YR@97
- Dam's Production: 6 BR@100, 6 WR@96, 4 YR@98, 6 %IMF@99 and 6 REA@99
- Ranks in the top 10% of the breed for \$EN and top 20% for SC



Lot 8

NA REGISTRY 718



DOB: 01/24/17 • Reg: 18964381 • Tattoo: 718

%IMF	4.69
%IMF RATIO	102
REA	13.4
REA RATIO	99
RIB FAT	0.23
RUMP FAT	0.27

BW	85
Act WW	784
Adj 205	736
Adj 365	1224
Scrotal	34.5

Rito 707 of Ideal 3407 7075
S A V Registry 2831
 S A V Madame Pride 0075
 Sitz Onward 9007
NA Miss Anna 365A
 NA Miss Image Maker JN 5501

CED	BW	WW	Milk	YW	SC	Marb	RE	Fat	\$W	\$F	\$G	\$B
+7	+0.7	+44	+21	+69	+0.78	+0.17	+0.43	-0.025	+43.42	+6.08	+22.64	+81.59

- Suitable for use on larger framed heifers
- Individual Performance: BR@99, WR@101 and YR@99
- Top 10% for Fat, top 15% for \$YG and \$EN and top 35% for BW
- 3/4 brother to Lot 6



Spring Bulls

Hello,

Thank you for your interest in our offering at the 2018 Nissen Angus Bull Sale. We are extremely grateful to our past customers for your support and look forward to gaining new customers and friends this year. Our sincere thanks to Jeff and Christie for their friendship and allowing us to market our bulls through their annual sale. We also need to thank our parents, Bob and Maureen, for supporting us through the day to day activities as I attend Washington State and Scott attends Montana Tech. We couldn't do it without them.

We are very excited about the 9 bulls we are offering this year. We think our two bulls by SAV Recharge are real herd bull candidates, and we are excited for our first sons of Shipwheel Signature 4541 including our first embryo transfer calves. Our bulls are a little younger this year and the weaning weights were quite a bit lighter than usual with the drought, but they caught up well in the feedlot.

We are proud of the strides we've made with our cowherd. We think you'd be very impressed with the udders, feet, and fertility of the mothers of these bulls. We are also very pleased with the longevity that we're starting to see in the dams and granddams which is shown in the footnotes by their progeny records.

Thanks again! We look forward to seeing you on sale day and if you have any questions please give us a call.

Lane & Taryn Schmitt
Scott Schmitt



Lane & Taryn Schmitt
Scott Schmitt
406.390.2275 Lane's Cell
schmitt.angus@gmail.com



LOT 9

LOT 9 **SCHMITT RECHARGE 709**

DOB: 02/25/2017 • Reg: 18981365 • Tattoo: 709

BW	75	Rito 707 of Ideal 3407 7075	%IMF	4.32
Act WW	771	S A V Recharge 3436	%IMF RATIO	95
Adj 205	759	S A V Blackcap May 4136	ADJ REA	13
Adj 365	1349	#Morgans Direction 111 9901	REA RATIO	102
Scrotal	35	S Morgan 916	RIB FAT	0.29
		S Leading On Sana R931	RUMP FAT	0.34

CED	BW	WW	Milk	YW	SC	Marb	RE	Fat	\$W	\$F	\$G	\$B
+12	-1.5	+47	+28	+94	+40	+0.42	+0.61	+0.005	+58.15	+56.53	+32.45	+123.42

- Heifer Bull
- Individual Performance: WR@107, YR@112
- Dam's Record: 7 WR@100, 6 IMF@104, 6 REA @105
- Granddam: 11 WR@104, 8 YR@104, 8 IMF@108
- Deep, Thick, Standout Bull Since Birth
- 9 Yr Old Dam with Good Udder, Fertility, & Longevity!



LOT 10



LOT 10 **SCHMITT S RECHARGE 760**

DOB: 02/26/2017 • Reg: 18971814 • Tattoo: 760

BW	92	Rito 707 of Ideal 3407 7075	%IMF	5.85
Act WW	695	S A V Recharge 3436	%IMF RATIO	128
Adj 205	723	S A V Blackcap May 4136	ADJ REA	12.9
Adj 365	1294	AAR Ten X 9903	REA RATIO	101
Scrotal	40	Clear Creek Blackcap 448	RIB FAT	0.31
		CCA Blackcap 016	RUMP FAT	0.30

CED	BW	WW	Milk	YW	SC	Marb	RE	Fat	\$W	\$F	\$G	\$B
+9	+1.0	+56	+35	+111	+1.89	+0.64	+0.48	-0.09	+68.72	+60.48	+39.55	+123.57

- Suitable for Young Cows
- Individual Performance: WR@102, YR@107
- Dam's Record: 2WR@105, 2 IMF@117
- Thick, Deep, Big Scrotal, High IMF, Standout Bull
- High Performance Dam with Added Carcass Quality



NA Miss Doll 323A
DAM OF LOT 11



LOT 11

Lot 11 NA CHISUM 732
DOB: 01/28/17 • Reg: 18964365 • Tattoo: 732 • DDP

BW	88
Act WW	874
Adj 205	824
Adj 365	1330
Scrotal	40

#S Chisum 6175
S Chisum 255
#S Blossom 0278

NA Aberdeen JCN 110
NA Miss Doll 323A
NA Miss Anna JN 7779

%IMF	4.28
%IMF RATIO	93
REA	14.2
REA RATIO	106
RIB FAT	0.29
RUMP FAT	0.38

CED	BW	WW	Milk	YW	SC	Marb	RE	Fat	\$W	\$F	\$G	\$B
+4	+1.6	+64	+32	+107	+0.58	-.18	+0.75	+0.016	+75.90	+75.07	+3.09	+124.26

- Individual Performance: WR@113 and YR@108
- Dam's Production: 2 BR@100, 2 WR@110, 2 %IMF@101 and 2 REA@108
- Top 2% for \$W, top 10% for CW, CEM and Milk, top 15% for WW and \$F, top 20% for YW and Doc and top 25% for HP
- 3/4 brother to Lot 37

Lot 12 NA CHISUM 710
DOB: 01/22/17 • Reg: 18987931 • Tattoo: 710 • OHP

BW	95
Act WW	822
Adj 205	739
Adj 365	1277
Scrotal	39.5

#S Chisum 6175
S Chisum 255
#S Blossom 0278

N B C
Diamond Clova Pride 088Z
R&S Clova Pride 6450

%IMF	4.74
%IMF RATIO	103
REA	16
REA RATIO	118
RIB FAT	0.31
RUMP FAT	0.47

CED	BW	WW	Milk	YW	SC	Marb	RE	Fat	\$W	\$F	\$G	\$B
+6	+1.4	+64	+20	+98	+1.13	+0.45	+0.66	+0.029	+64.64	+46.12	+32.55	+106.89

- Individual Performance: WR@102 and YR@104
- Dam's Production: 4 BR@99, 4 WR@97, 2 YR@96, 3 %IMF@97 and 3 REA@102
- Ranks in the top 10% for \$W, top 15% for WW, top 25% for RE and SC and top 30% for Doc

Lot 13 NA CHISUM 769
DOB: 02/05/17 • Reg: 18964370 • Tattoo: 769 • OHP

BW	90
Act WW	751
Adj 205	699
Adj 365	1190
Scrotal	37.5

#S Chisum 6175
S Chisum 255
#S Blossom 0278

#Connealy Thunder
NA Miss Anna JCN 0012
NA Miss Lucky Anna JCN 8872

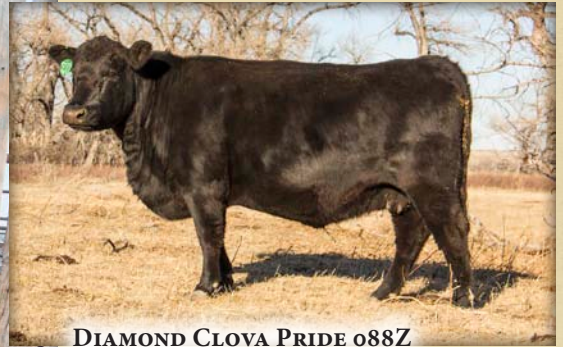
%IMF	4.28
%IMF RATIO	94
REA	14.7
REA RATIO	110
RIB FAT	0.29
RUMP FAT	0.36

CED	BW	WW	Milk	YW	SC	Marb	RE	Fat	\$W	\$F	\$G	\$B
+10	-1.1	+33	+24	+55	+0.44	+0.29	+0.22	+0.028	+41.21	-2.04	+23.71	+52.78

- Suitable for use on larger framed heifers
- Individual Performance: WR@96 and YR@96
- Dam's Production: 5 WR@99, 3 YR@103 and 5 REA@101
- Top 10% for BW and \$EN, top 15% for CEM and top 20% for for CED



LOT 12



DIAMOND CLOVA PRIDE 088Z
DAM OF LOT 12

Spring Bulls

Lot 14 NA TEN SPEED 757

DOB: 02/01/17 • Reg: 18962651 • Tattoo: 757



BW	93
Act WW	798
Adj 205	750
Adj 365	1252
Scrotal	38

#A A R Ten X 7008 S A
S A V Ten Speed 3022
 #S A V Madame Pride 1134
 KG Rainmaker 9208
NA Miss Lucky 260Z
 NA Miss Lucky Pride 8855

%IMF	5.6
%IMF RATIO	123
REA	13.9
REA RATIO	104
RIB FAT	0.38
RUMP FAT	0.41

CED	BW	WW	Milk	YW	SC	Marb	RE	Fat	\$W	\$F	\$G	\$B
+8	+1.4	+56	+26	+99	+1.54	+7.9	+0.35	+0.042	+57.21	+51.84	+37.56	+115.63

- Individual Performance: WR@103 and YR@101
- Dam's Production: 3 BR@93, 3 WR@96, 3 %IMF@99 and 3 REA@96
- Top 10% for SC, top 15% for CEM and \$QG, top 20% for Marb, top 25% for \$W and top 30% for WW, YW and Milk



LOT 14

Lot 15 NA TEN SPEED 735

DOB: 01/28/17 • Reg: 18962630 • Tattoo: 735



BW	86
Act WW	771
Adj 205	770
Adj 365	1314
Scrotal	36

#A A R Ten X 7008 S A
S A V Ten Speed 3022
 #S A V Madame Pride 1134
 S A V Registry 2831
NA Queen Mother 528
 Diamond Queen Mother 5X98

%IMF	4.46
%IMF RATIO	97
REA	13.8
REA RATIO	104
RIB FAT	0.33
RUMP FAT	0.35

CED	BW	WW	Milk	YW	SC	Marb	RE	Fat	\$W	\$F	\$G	\$B
+2	+2.0	+69	+18	+121	-.12	+3.3	+0.73	-0.008	+57.52	+83.70	+26.88	+155.63

- Individual Performance: WR@106 and YR@107
- Out of a first calf heifer
- Ranks in the top 3% for CW, top 5% for WW and YW, top 10% for \$F and \$B, top 15% for RE and top 25% for Fat.
- 3/4 brother to Lot 41



LOT 15

Lot 16 NA TEN SPEED 717

DOB: 01/24/17 • Reg: 18962684 • Tattoo: 717 • OHP



BW	80
Act WW	769
Adj 205	715
Adj 365	1264
Scrotal	34

#A A R Ten X 7008 S A
S A V Ten Speed 3022
 #S A V Madame Pride 1134
 #BT Right Time 24J
NA Miss Queen 24J 533 JN
 N A Queen Lovemere 6165

%IMF	4.64
%IMF RATIO	101
REA	15.2
REA RATIO	114
RIB FAT	0.31
RUMP FAT	0.32

CED	BW	WW	Milk	YW	SC	Marb	RE	Fat	\$W	\$F	\$G	\$B
+10	+0.4	+52	+27	+95	+0.51	+3.3	+0.80	-0.01	+57.42	+66.74	+31.92	+136.48

- HEIFER BULL
- Individual Performance: BR@91, WR@98 and YR@102
- Dam's Production: 10 BR@97, 10 WR@102, 8 YR@101, 13 %IMF@99 and 13 REA@105
- Top 10% for RE and \$YG, top 20% for CED, YH, Fat and \$F, top 25% for Milk, \$W and \$B and top 30% for BW

Lot 17 NA FINAL OPTION 795

DOB: 02/26/17 • Reg: 18976884 • Tattoo: 795



BW	98
Act WW	820
Adj 205	842
Adj 365	1352
Scrotal	35

Carter Final Option 201
Hilltop Final Option 5350
 #Hilltop Blackbird GP 09
 Sitz Onward 9007
NA Miss Doll 334A
 NA Miss Design Anna 645S

%IMF	6.69
%IMF RATIO	149
REA	12
REA RATIO	94
RIB FAT	0.26
RUMP FAT	0.32

CED	BW	WW	Milk	YW	SC	Marb	RE	Fat	\$W	\$F	\$G	\$B
-1	+3.4	+65	+24	+110	+0.92	+1.12	+0.39	-0.002	+54.31	+74.81	+47.50	+170.80

- Individual Performance: WR@116 and YR@110
- Dam's Production: 2 WR@111, 1 YR@107, 2 %IMF@120 and 2 REA@101
- Top 2% for \$B, top 3% for \$QG, top 4% for Marb, top 10% for WW, CW and \$G and top 15% for YW and \$F

Lot 18 NA FINAL OPTION 766

DOB: 02/04/17 • Reg: 18964443 • Tattoo: 766



BW	94
Act WW	810
Adj 205	751
Adj 365	1293
Scrotal	42

Carter Final Option 201
Hilltop Final Option 5350
 #Hilltop Blackbird GP 09
 #TC Aberdeen 759
NA Miss Sugar 120
 NA Miss Sugar Design YR 901

%IMF	4.6
%IMF RATIO	101
REA	14
REA RATIO	105
RIB FAT	0.29
RUMP FAT	0.38

CED	BW	WW	Milk	YW	SC	Marb	RE	Fat	\$W	\$F	\$G	\$B
+5	+1.9	+61	+26	+105	+1.17	+6.4	+0.52	+0.008	+64.02	+70.76	+39.69	+130.78

- Individual Performance: WR@103 and YR@105
- Dam's Production: 5 BR@95, 5 WR@95, 4 REA@104
- Ranks in the top 15% of the breed for \$W, top 20% for WW, YW, HP and \$F and the top 25% for SC



LOT 17



NA MISS QUEEN 455 - DAM OF LOT 19

LOT 19 NA FINAL OPTION 784

DOB: 02/19/17 • Reg: 18976886 • Tattoo: 784 • OHP



BW	98
Act WW	803
Adj 205	815
Adj 365	1332
Scrotal	40.5

Carter Final Option 201
Hilltop Final Option 5350
 #Hilltop Blackbird GP 09
 GDAR CJD Alliance 0714
NA Miss Queen 455
 NA Miss Queen JCN 144

%IMF	5.36
%IMF RATIO	119
REA	14.1
REA RATIO	109
RIB FAT	0.29
RUMP FAT	0.31

CED	BW	WW	Milk	YW	SC	Marb	RE	Fat	\$W	\$F	\$G	\$B
-3	+4.5	+62	+28	+108	+1.2	+5.2	+0.54	+0.011	+55.05	+72.41	+31.97	+152.74

- Individual Performance: WR 112 and YR@108
- Dam's Production: 2 WR@109, 1 YR@106, 2 %IMF@114 and 2 REA@107
- Top 10% for \$B, top 15% for WW and \$F, top 20% for YW and Milk and the top 25% for SC
- 3/4 brother to Lots 53 & 54

LOT 20 NA FINAL OPTION 783

DOB: 02/19/17 • Reg: 18976881 • Tattoo: 783



BW	83
Act WW	777
Adj 205	752
Adj 365	1291
Scrotal	37.5

Carter Final Option 201
Hilltop Final Option 5350
 #Hilltop Blackbird GP 09
 #Diamond Justice 901S
Diamond Chloe 2831
 Diamond Chloe 4398

%IMF	4.28
%IMF RATIO	95
REA	14.8
REA RATIO	113
RIB FAT	0.37
RUMP FAT	0.30

CED	BW	WW	Milk	YW	SC	Marb	RE	Fat	\$W	\$F	\$G	\$B
+9	+0.2	+49	+29	+85	+0.86	+5.3	+0.56	+0.021	+56.93	+43.31	+35.42	+117.48

- HEIFER BULL
- Individual Performance: BR@93, WR@103 and YR@104
- Dam's Production: 4 BR@94, 4 WR@96, 1 YR@102, 3 &IMF@109 and 3 REA@101
- Top 15% for Milk, top 25% for CED, BW and \$W



LOT 20

LOT 21 NA FINAL OPTION 789

DOB: 02/21/17 • Reg: 18976880 • Tattoo: 789



BW	90
Act WW	770
Adj 205	751
Adj 365	1186
Scrotal	39.5

Carter Final Option 201
Hilltop Final Option 5350
 #Hilltop Blackbird GP 09
 KG Wisdom 9366
NA Miss Anna 255
 NA Miss Anna 9932

%IMF	5.61
%IMF RATIO	125
REA	13.3
REA RATIO	102
RIB FAT	0.41
RUMP FAT	0.34

CED	BW	WW	Milk	YW	SC	Marb	RE	Fat	\$W	\$F	\$G	\$B
+2	+2.5	+56	+19	+84	+1.59	+7.9	+0.20	+0.051	+50.45	+42.11	+35.08	+115.02

- Individual Performance: WR@103 and YR@96
- Dam's Production: 5 BR@99, 5 WR@101 and 5 REA@98
- Ranks in the top 10% for YW and SC, top 15% for YQG, top 20% for \$EN and Marb and top 30% for WW.



LOT 21

LOT 22 NA RECHARGE CA 756

DOB: 02/01/17 • Reg: 18968089 • Tattoo: 756



BW	92
Act WW	815
Adj 205	750
Adj 365	1251
Scrotal	38

Rito 707 of Ideal 3407 7075
S A V Recharge 3436
 S A V Blackcap May 4136
 #S A V Final Answer 0035
CA Algoma Golden 069
 Algoma Golden 416 T153

%IMF	3.9
%IMF RATIO	85
REA	13.7
REA RATIO	103
RIB FAT	0.36
RUMP FAT	0.40

CED	BW	WW	Milk	YW	SC	Marb	RE	Fat	\$W	\$F	\$G	\$B
+6	+1.6	+58	+22	+100	+1.05	+0.01	+0.59	+0.011	+53.4	+48.64	+11.93	+76.15

- Individual Performance: WR @103 and YR@101
- Dam's Production: 5 BR@99, 5 WR@101 and 5 REA@98
- Top 25% for WW, top 30% for YW, SC, \$W and \$YG

LOT 23 NA RECHARGE 773

DOB: 02/11/17 • Reg: 18964440 • Tattoo: 773



BW	92
Act WW	818
Adj 205	773
Adj 365	1269
Scrotal	38.5

Rito 707 of Ideal 3407 7075
S A V Recharge 3436
 S A V Blackcap May 4136
 #Hoover Dam
#NA Miss Anna 261
 NA Miss Anna Design 712

%IMF	4.22
%IMF RATIO	93
REA	14.2
REA RATIO	107
RIB FAT	0.22
RUMP FAT	0.23

CED	BW	WW	Milk	YW	SC	Marb	RE	Fat	\$W	\$F	\$G	\$B
+1	+2.4	+60	+29	+106	+1.09	+2.3	+0.70	-0.058	+59.07	+59.09	+29.10	+126.98

- Individual Performance: WR@106 and YR@103
- Dam's Production: 4 BR@98, 4 WR@105, 3 YR@101, 4 %IMF@109 and 4 REA@97
- Ranks in the top 1% for Fat, top 3% for \$YG, top 10% for HP, top 20% for WW, YW and \$W and top 25% for YH and CW

Spring Bulls

Lot 24

NA RECHARGE 705

DOB: 01/21/17 • Reg: 18978431 • Tattoo: 705



%IMF	4.02
%IMF RATIO	100
REA	13.4
REA RATIO	100
RIB FAT	0.26
RUMP FAT	0.29

BW	76
Act WW	771
Adj 205	758
Adj 365	1320
Scrotal	38

Rito 707 of Ideal 3407 7075
S A V Recharge 3436
 S A V Blackcap May 4136
 Sitz Onward 9007
NA Miss Maker JCN 210Z
 NA Miss Image Maker JN 5501

CED	BW	WW	Milk	YW	SC	Marb	RE	Fat	\$W	\$F	\$G	\$B
+1	+2.0	+59	+15	+108	+0.92	+0.39	+0.54	-0.015	+47.92	+61.61	+32.10	+116.18

- Twin - raised on a foster mother
- Top 15% for Fat, top 20% for YW and \$EN, top 25% for WW, \$F and \$YG and top 30% for Doc



LOT 24

LOT 25



Lot 25

NA RECHARGE 708

DOB: 01/22/17 • Reg: 18964432 • Tattoo: 708



%IMF	4.36
%IMF RATIO	95
REA	12.9
REA RATIO	98
RIB FAT	0.27
RUMP FAT	0.33

BW	75
Act WW	782
Adj 205	769
Adj 365	1255
Scrotal	37.5

Rito 707 of Ideal 3407 7075
S A V Recharge 3436
 S A V Blackcap May 4136
 JVC Final Answer 0035 903
NA Everelda Entense 3111
 #CoreyA Everelda Entense 5513

CED	BW	WW	Milk	YW	SC	Marb	RE	Fat	\$W	\$F	\$G	\$B
+3	+3.5	+50	+24	+83	+1.25	+0.08	+0.50	-0.005	+44.05	+34.23	+17.16	+80.79

- Twin
- Individual Performance: BR@93, WR@106 and YR@102
- Dam's Production: 2 BR@2, 3 %IMF@97 and 3 REA@95
- Top 20% for SC and \$YG, top 30% for Fat and top 35% for \$EN



NA EVERELDA ENTENSE 3111 - DAM OF LOT 25

Lot 26 NA RECHARGE 737

DOB: 01/28/17 • Reg: 18964438 • Tattoo: 737



BW	82
Act WW	784
Adj 205	714
Adj 365	1218
Scrotal	36

Rito 707 of Ideal 3407 7075
S A V Recharge 3436
 S A V Blackcap May 4136
 #TC Aberdeen 759
NA Erica CA 219
 #Corey A Erica 24J 558

%IMF	4.38
%IMF RATIO	96
REA	13.7
REA RATIO	101
RIB FAT	0.22
RUMP FAT	0.21

CED	BW	WW	Milk	YW	SC	Marb	RE	Fat	\$W	\$F	\$G	\$B
+8	+0.2	+50	+19	+91	+1.18	+4.1	+0.79	-0.042	+47.65	+50.09	+39.81	+109.77

- HEIFER BULL
- Individual Performance: BR@92, WR@98 and YR@99
- Dam's Production: 3 BR@91, 3 WR@98, 3 %IMF@104 and 3 REA@101
- Top 1% for \$YG, top 3% for Fat, top 10% for RE, top 20% for \$EN and top 25% for BW and SC

Lot 27 NA REGISTRY 745

DOB: 01/30/17 • Reg: 18964382 • Tattoo: 745 • OHP



BW	91
Act WW	816
Adj 205	784
Adj 365	1325
Scrotal	42.5

Rito 707 of Ideal 3407 7075
S A V Registry 2831
 S A V Madame Pride 0075
 GDAR CJD Alliance 0714
NA Miss Anna 430
 NA Miss Anna JCN 0012

%IMF	4.55
%IMF RATIO	100
REA	13.5
REA RATIO	101
RIB FAT	0.37
RUMP FAT	0.39

CED	BW	WW	Milk	YW	SC	Marb	RE	Fat	\$W	\$F	\$G	\$B
+4	+1.8	+55	+18	+100	+2.07	+0.1	+0.58	+0.009	+49.23	+52.89	+7.50	+118.21

- Individual Performance: WR@108 and YR@107
- Dam's Production: 2 BR@95, 2 WR@102, 2 %IMF@97 and 2 REA@97
- Ranks in the top 2% for SC, top 10% for CW, top 20% for Doc and \$EN and top 30% for YW and HP

Lot 28 NA REGISTRY 7114

DOB: 03/14/17 • Reg: 18976878 • Tattoo: 7114



BW	91
Act WW	753
Adj 205	791
Adj 365	1343
Scrotal	38

S A V Registry 2831
NA Registry 521
 H A R B Ebony Erica 912
 #TC Aberdeen 759
#NA Miss Quality Abe 102
 #NA Miss Quality VRD 9117

%IMF	4.09
%IMF RATIO	93
REA	14.8
REA RATIO	117
RIB FAT	0.31
RUMP FAT	0.32

CED	BW	WW	Milk	YW	SC	Marb	RE	Fat	\$W	\$F	\$G	\$B
+3	+2.6	+67	+34	+111	+1.93	+3.4	+0.70	+0.013	+72.35	+68.86	+25.14	+149.24

- DONATION LOT
- Individual Performance: WR@109 and YR@109
- Dam's Production: 5 WR@107, 3 YR@102 and 4 REA@107
- Top 3% for SC and Milk, top 4% for CW and \$W, top 10% for WW, top 15% for YW and top 20% for HP, MW, RE and \$F

Lot 29 NA REGISTRY 753

DOB: 02/01/17 • Reg: 18964379 • Tattoo: 753



BW	82
Act WW	754
Adj 205	723
Adj 365	1121
Scrotal	35

Rito 707 of Ideal 3407 7075
S A V Registry 2831
 S A V Madame Pride 0075
 A A R Hilger 1110
NA Miss Tracy 357A
 NA Miss Image Time 718

%IMF	4.88
%IMF RATIO	107
REA	13.1
REA RATIO	99
RIB FAT	0.24
RUMP FAT	0.25

CED	BW	WW	Milk	YW	SC	Marb	RE	Fat	\$W	\$F	\$G	\$B
+12	+0.1	+39	+21	+61	+0.77	+5.7	+0.32	+0.006	+36.26	+2.95	+37.18	+87.01

- HEIFER BULL
- Individual Performance: BR@96, WR@99 and YR@91
- Dam's Production: 2 BR@91 and 2 WR@98
- Ranks in the top 10% of the breed for CED and Doc, top 15% for \$EN, and top 25% for BW



Donation Lot

Lot 28 was selected by Wacee himself to be our donation lot this year. Wacee chose the bull because his birthday happens to be on the 28th, so it seemed a perfect fit! We are honored to donate and support this young man and his family as they continue on their journey of winning the fight against cancer!

Lot 30 NA REGISTRY 767

DOB: 02/04/17 • Reg: 18964397 • Tattoo: 767 • OHP



BW	88
Act WW	695
Adj 205	667
Adj 365	1129
Scrotal	37.5

Rito 707 of Ideal 3407 7075
S A V Registry 2831
 S A V Madame Pride 0075
 #TC Stockman 365
NA Miss Samantha 139 of JN
 N A Queen Lovemere 6165

%IMF	4.19
%IMF RATIO	92
REA	12.2
REA RATIO	93
RIB FAT	0.35
RUMP FAT	0.25

CED	BW	WW	Milk	YW	SC	Marb	RE	Fat	\$W	\$F	\$G	\$B
+2	+2.2	+34	+13	+63	+0.49	+1.3	+0.28	+0.023	+17.26	+4.84	+13.46	+74.26

- Individual Performance: BR@100, WR@92 and YR@92
- Dam's Production: 11 BR@99, 11 WR@103, 8 YR@106 and 12 REA@106
- Top 3% for \$EN and top 15% for Doc

Lot 31 **SCHMITT S SIGNATURE 762**



DOB: 03/20/2017 • Reg: 18988111 • Tattoo: 762

BW	85
Act WW	670
Adj 205	718
Adj 365	1251
Scrotal	37.5

Boyd Signature 1014
Shipwheel Signature 4541
 Shipwheel Black Pride 277
 #Nichols Extra K205
#NA Miss Extra Anna 920
 NA Miss Sana Anna 547

%IMF	5.16
%IMF RATIO	NA
REA	14
REA RATIO	NA
RIB FAT	0.38
RUMP FAT	0.45

CED	BW	WW	Milk	YW	SC	Marb	RE	Fat	\$W	\$F	\$G	\$B
+6	+0.4	+49	+31	+92	+63	+0.34	+0.48	+0.031	+59.08	+45.15	+24.59	+104.41

- Large Heifers and Young Cows
- Individual Performance: WR@101, YR@104
- Dam's Record: 7 WR@107, 5 YR@106, 6 IMF@113
- Long Spined, Thick Made, Big Scrotal, Cow Maker
- Pathfinder Dam with some Longevity! The Best Producer in the Schmitt Herd



LOT 31

Lot 32 **SCHMITT SIGNATURE 710**



DOB: 02/25/17 • Reg: 19040194 • Tattoo: 710

BW	92
Act WW	628
Adj 205	618
Adj 365	1124
Scrotal	34.5

Boyd Signature 1014
Shipwheel Signature 4541
 Shipwheel Black Pride 277
 #Sitz Alliance 6595
SCR Everelda Entense 866
 BT Everelda Entense 613L

%IMF	4.87
%IMF RATIO	93
ADJ REA	12.1
REA RATIO	101
RIB FAT	0.26
RUMP FAT	0.32

CED	BW	WW	Milk	YW	SC	Marb	RE	Fat	\$W	\$F	\$G	\$B
+7	+0.8	+55	+29	+107	+50	+0.29	+0.41	+0.046	+61.88	+72.41	+16.18	+128.03

- ET, Heifer Bull
- Very low i50k for CE & BW, Excellent EPD Spread
- Individual Performance: ET WR@100, YR@100
- Dam's Record: 7WR@100, 6YR@100, 8 IMF@101
- Weaned Light but Caught Up in the Feedlot with a 4.11 ADG
- Dam is One of the Foundation Cows in the Schmitt Herd

Lot 33 **SCHMITT SIGNATURE 702**



DOB: 02/21/17 • Reg: 19040193 • Tattoo: 702

BW	91
Act WW	645
Adj 205	627
Adj 365	1147
Scrotal	32

Boyd Signature 1014
Shipwheel Signature 4541
 Shipwheel Black Pride 277
 #Sitz Alliance 6595
SCR Everelda Entense 866
 BT Everelda Entense 613L

%IMF	5.64
%IMF RATIO	107
ADJ REA	11.9
REA RATIO	99
RIB FAT	0.36
RUMP FAT	0.32

CED	BW	WW	Milk	YW	SC	Marb	RE	Fat	\$W	\$F	\$G	\$B
+4	+0.2	+62	+39	+102	+0.20	+0.14	+0.19	+0.050	+87.06	+67.10	+8.60	+92.72

- ET Full Brother to 710
- Individual Performance: ET WR@100, YR@100
- Dam's Record: 7 WR@100, 6 YR@100, 8 IMF@101
- Good Gaining Bull, Top 1% \$W
- Dam is One of the Foundation Cows in the Schmitt Herd

Lot 34 **SCHMITT S SIGNATURE 759**



DOB: 02/25/2017 • Reg: 18980523 • Tattoo: 759

BW	80
Act WW	709
Adj 205	713
Adj 365	1193
Scrotal	34

Boyd Signature 1014
Shipwheel Signature 4541
 Shipwheel Black Pride 277
 Shipwheel Far & Wide 1602
SS Anna 333
 #NA Miss Extra Anna 920

%IMF	5.86
%IMF RATIO	128
ADJ REA	12.5
REA RATIO	98
RIB FAT	0.33
RUMP FAT	0.44

CED	BW	WW	Milk	YW	SC	Marb	RE	Fat	\$W	\$F	\$G	\$B
+11	-1.2	+45	+26	+82	+85	+0.66	+0.06	+0.050	+54.68	+30.13	+31.85	+73.07

- Heifer Bull
- Individual Performance: WR@100, YR@99
- Dam's Record: 3 WR@101, 2 YR@107, 3 IMF@135
- Pathfinder Granddam: 7 WR@107, 5 YR@106, 6 IMF@113
- Long Spined, High Gaining, Calving Ease, Carcass Bull
- Dam is Good Footed, Good Uddered, Easy Keeping Cow

Lot 35 **NA CHISUM 760**



DOB: 02/02/17 • Reg: 18964368 • Tattoo: 760

BW	84
Act WW	714
Adj 205	696
Adj 365	1216
Scrotal	37.5

#S Chisum 6175
S Chisum 255
 #S Blossom 0278
 NA Charge On 902
NA Miss Pretty 451
 NA Miss Pretty 475 JN

%IMF	4.63
%IMF RATIO	102
REA	10.3
REA RATIO	78
RIB FAT	0.27
RUMP FAT	0.32

CED	BW	WW	Milk	YW	SC	Marb	RE	Fat	\$W	\$F	\$G	\$B
+8	+0.6	+55	+21	+105	+1.27	+0.20	+0.25	-0.003	+48.08	+61.25	+17.64	+107.22

- Suitable for use on larger framed heifers
- Individual Performance: WR@96 and YR@99
- Dam's Production: 2 WR@97 and 2 IMF@94
- Top 3% for CEM, top 20% for YW, SC and Doc, and top 25% for YH

Lot 36 **NA CHISUM 719**



DOB: 01/24/17 • Reg: 18964364 • Tattoo: 719

BW	78
Act WW	676
Adj 205	678
Adj 365	1163
Scrotal	36.5

#S Chisum 6175
S Chisum 255
 #S Blossom 0278
 A A R Hilger 1110
NA Anna 541
 NA Miss Anna 208Z

%IMF	4.03
%IMF RATIO	88
REA	12.2
REA RATIO	92
RIB FAT	0.17
RUMP FAT	0.34

CED	BW	WW	Milk	YW	SC	Marb	RE	Fat	\$W	\$F	\$G	\$B
-1	+3.7	+57	+24	+91	+2.01	+0.24	+0.32	+0.007	+53.33	+41.00	+22.09	+86.90

- Individual Performance: BR@97, WR@93 and YR@94
- Out of a first calf heifer
- Ranks in the top 2% of the breed for SC and top 30% for WW and \$W

Lot 37 **NA CHISUM 771**



DOB: 02/06/17 • Reg: 18964366 • Tattoo: 771

BW	88
Act WW	676
Adj 205	660
Adj 365	1215
Scrotal	35.5

#S Chisum 6175
S Chisum 255
 #S Blossom 0278
 NA Aberdeen JCN 110
NA Comanches Princess 335A
 NA Miss Susie 9934

%IMF	4.86
%IMF RATIO	100
REA	12.1
REA RATIO	100
RIB FAT	0.25
RUMP FAT	0.38

CED	BW	WW	Milk	YW	SC	Marb	RE	Fat	\$W	\$F	\$G	\$B
+2	+3.5	+53	+26	+89	+0.75	+0.40	+0.53	+0.007	+50.47	+50.19	+31.02	+118.43

- Individual Performance: WR@100 and YR@100
- Dam's Performance: 2 BR@100, 2 WR@10, 2 %IMF@102 and 2 REA@99
- Ranks in the top 15% for HP and top 30% for Milk
- 3/4 brother to Lot 11

Lot **38** **NA RECHARGE 758**

DOB: 02/02/17 • Reg: 18964442 • Tattoo: 758 • OHP



BW	85
Act WW	720
Adj 205	665
Adj 365	1091
Scrotal	35

Rito 707 of Ideal 3407 7075
S A V Recharge 3436
 S A V Blackcap May 4136
 S John Wayne
Vermilion Queen 2296
 Vermilion Queen 8090

%IMF	3.49
%IMF RATIO	77
REA	13.1
REA RATIO	98
RIB FAT	0.32
RUMP FAT	0.34

CED	BW	WW	Milk	YW	SC	Marb	RE	Fat	\$W	\$F	\$G	\$B
+2	+2.3	+48	+18	+78	+0.39	+0.11	+0.38	+0.028	+39.84	+30.49	+15.09	+66.32

- Individual Performance: BR@96, WR@91 and YR@88
- Dam's Production: 4 BR@94, 4 WR@93 and 3 REA@105
- Top 15% for \$ENand top 30% for CEM



LOT 38

Lot **39** **NA RECHARGE 761**

DOB: 02/02/17 • Reg: 18964428 • Tattoo: 761 • OHP



BW	74
Act WW	716
Adj 205	697
Adj 365	1222
Scrotal	35.5

Rito 707 of Ideal 3407 7075
S A V Recharge 3436
 S A V Blackcap May 4136
 #Sitz JLS Game Day 9630
NA Queen 414
 Vermilion Queen 2296

%IMF	5.08
%IMF RATIO	111
REA	11.6
REA RATIO	87
RIB FAT	0.4
RUMP FAT	0.27

CED	BW	WW	Milk	YW	SC	Marb	RE	Fat	\$W	\$F	\$G	\$B
+8	+0	+49	+14	+85	+0.40	+0.26	+0.43	+0.037	+46.75	+37.14	+20.76	+88.12

- HEIFER BULL
- Individual Performance: BR@87, WR@96 and YR@99
- Dam's Production: 2 BR@84, 2 WR@98 and 2 %IMF@117
- Ranks in the top 3% for HP and \$EN, top 10% for Doc, and top 20% for BW
- 3/4 brother to Lot 40



LOT 39

Lot **40** **NA RECHARGE 751**

DOB: 01/31/17 • Reg: 18964427 • Tattoo: 751



BW	77
Act WW	695
Adj 205	675
Adj 365	1277
Scrotal	35

Rito 707 of Ideal 3407 7075
S A V Recharge 3436
 S A V Blackcap May 4136
 #Sitz JLS Game Day 9630
NA Blackbird 417
 Vermilion Blackbird 2616

%IMF	4.12
%IMF RATIO	90
REA	11.6
REA RATIO	87
RIB FAT	0.31
RUMP FAT	0.38

CED	BW	WW	Milk	YW	SC	Marb	RE	Fat	\$W	\$F	\$G	\$B
+1	+3.2	+76	+14	+127	+1.33	+0.04	+0.17	+0.025	+60.10	+88.31	+2.45	+110.39

- Individual Performance: BR@90, WR@93 and YR@104
- Dam's Production: 2 BR@88, 2 WR@96, 2 REA@93
- Top 2% for WW, top 3% for YW, top 5% for \$F, top 15% for SC, and top 20% for Doc, CW and \$W
- 3/4 brother to Lot 39



LOT 40

Lot **41** **NA TEN SPEED 725**

DOB: 01/26/17 • Reg: 18962628 • Tattoo: 725 • OHP



BW	76
Act WW	682
Adj 205	686
Adj 365	1246
Scrotal	35.5

#A A R Ten X 7008 S A
S A V Ten Speed 3022
 #S A V Madame Pride 1134
 S A V Registry 2831
NA Anna JCN 540
 NA Miss Anna JCN 0012

%IMF	4.49
%IMF RATIO	98
REA	13
REA RATIO	98
RIB FAT	0.25
RUMP FAT	0.24

CED	BW	WW	Milk	YW	SC	Marb	RE	Fat	\$W	\$F	\$G	\$B
+9	-1.1	+50	+15	+95	+0.24	+0.39	+0.71	-0.032	+42.07	+55.60	+35.94	+124.33

- HEIFER BULL
- Individual Performance: BR@94, WR@94 and YR@101
- Out of a first calf heifer
- Ranks in the top 5% for Fat and \$YG, top 10% for BW, top 15% for \$EN, top 20% for RE and top 25% for CED and Doc.
- 3/4 brother to Lot 15

Lot **42** **NA COPYRIGHT 791**

DOB: 02/23/17 • Reg: 18976883 • Tattoo: 791



BW	90
Act WW	731
Adj 205	732
Adj 365	1254
Scrotal	39

#A A R Ten X 7008 S A
TLC Copyright 358
 C C A Countess 081
 #Hoover Dam
NA Miss Image JCN 315
 NA Miss Image JCN 0008

%IMF	5.37
%IMF RATIO	119
REA	12.4
REA RATIO	96
RIB FAT	0.23
RUMP FAT	0.34

CED	BW	WW	Milk	YW	SC	Marb	RE	Fat	\$W	\$F	\$G	\$B
+11	+0.4	+69	+22	+117	+1.91	+0.91	+0.54	+0.021	+74.21	+59.96	+43.53	+134.08

- Suitable for use on larger framed heifers
- Individual Performance: WR@101 and YR@102
- Dam's Production: 3 BR@98, 3 WR@101, 3 %IMF@104 and 3 REA@97
- Top 3% for \$W and SC, top 5% for WW, top 10% for YW and \$QG, top 15% for CED and Marb, top 20% for Doc, CEM, CW and \$G

Spring Bulls

Lot **43** NA COPYRIGHT 7115

DOB: 03/14/17 • Reg: 18976882 • Tattoo: 7115



BW	84
Act WW	692
Adj 205	742
Adj 365	1305
Scrotal	34.5

#A A R Ten X 7008 S A
TLC Copyright 358
 C C A Countess 081
 N B C
NA Miss Wyona 308
 NA Miss Wyona 0066

%IMF	5.66
%IMF RATIO	127
REA	12.4
REA RATIO	101
RIB FAT	0.26
RUMP FAT	0.42

CED	BW	WW	Milk	YW	SC	Marb	RE	Fat	\$W	\$F	\$G	\$B
+9	+0	+78	+28	+134	+2.4	+9.8	+0.34	+0.029	+86.78	+97.43	+40.79	+150.23

- HEIFER BULL
- Individual Performance: BR@96, WR@102 and YR@106
- Dam's Production: 3 WR@107, 2 YR@108, 3 %IMF@107 and 3 REA@99
- Top 1% for WW, SC and \$W, top 2% for YW, top 3% for \$F, top 10% for YH, Doc, Marb, \$QG and \$B, top 15% for CW and top 20% for BW and Milk

Lot **45** SCHMITT SIGNATURE 714

DOB: 03/4/17 • Reg: 18968517 • Tattoo: 714



BW	89
Act WW	696
Adj 205	743
Adj 365	1175
Scrotal	33

Boyd Signature 1014
Shipwheel Signature 4541
 Shipwheel Black Pride 277
 #Sitz Dash 10277
S Dash 253
 NA Miss Time Alliance 359

%IMF	4.05
%IMF RATIO	90
ADJ REA	13
REA RATIO	102
RIB FAT	0.26
RUMP FAT	0.39

CED	BW	WW	Milk	YW	SC	Marb	RE	Fat	\$W	\$F	\$G	\$B
-2	+3.2	+53	+31	+106	+0.16	+0.30	+0.41	+0.058	+54.43	+61.15	+16.28	+106.83

- Individual Performance: WR@96, YR@97
- Dam's Record: 4 WR@99, 2 YR@104
- Granddam: 10 WR@103, 10 YR@98, 10 REA@102
- Cow Maker, Goes Back to Our First "6595" Cow
- Dam is Fertile, Feminine, Moderate Framed, with a Perfect Udder



LOT 45

Lot **44** SCHMITT SIGNATURE 722

DOB: 03/19/17 • Reg: 18968514 • Tattoo: 722



BW	89
Act WW	696
Adj 205	743
Adj 365	1191
Scrotal	33

Boyd Signature 1014
Shipwheel Signature 4541
 Shipwheel Black Pride 277
 #Sitz Dash 10277
S Dash 134
 S Morgan 916

%IMF	3.44
%IMF RATIO	NA
REA	12.5
REA RATIO	NA
RIB FAT	0.24
RUMP FAT	0.29

CED	BW	WW	Milk	YW	SC	Marb	RE	Fat	\$W	\$F	\$G	\$B
+5	+0.8	+51	+27	+89	+0.26	+0.15	+0.22	+0.029	+61.78	+42.86	+13.50	+77.54

- Heifer Bull
- Individual Performance: WR@104, YR@98
- Dam's Record: 5WR@102, 3YR@106
- Granddam: 7 WR@100, 6 IMF@104, 6 REA @105
- Our Cows by Sitz Dash Have Been Very Good
- They're Very Fertile, Moderate Framed, with Excellent Udders



LOT 44

Lot **46** SCHMITT SIGNATURE 723

DOB: 03/21/17 • Reg: 18968521 • Tattoo: 723



BW	98
Act WW	712
Adj 205	766
Adj 365	1222
Scrotal	34

Boyd Signature 1014
Shipwheel Signature 4541
 Shipwheel Black Pride 277
 #HA Image Maker 0415
S Winning Image 812
 S Leading On Sana R931

%IMF	3.66
%IMF RATIO	NA
REA	12.4
REA RATIO	NA
RIB FAT	0.18
RUMP FAT	0.20

CED	BW	WW	Milk	YW	SC	Marb	RE	Fat	\$W	\$F	\$G	\$B
-3	+4.4	+60	+30	+102	+0.05	+0.05	+0.46	-.019	+56.78	+73.19	+10.96	+146.17

- Individual Performance: WR@108, YR@101
- Dam's Record: 8WR@104, 4YR@101
- Granddam: Granddam: 11 WR@104, 8 YR@104, 8 IMF@108
- Add Pounds with this Long Spined, Bigger Framed, Cow Bull
- Dam has Longevity, Excellent Feet, Excellent Udder



LOT 47

Lot **47** NA FINAL OPTION CA 799

DOB: 02/26/17 • Reg: 18976888 • Tattoo: 799



BW	86
Act WW	694
Adj 205	756
Adj 365	1292
Scrotal	36.5

Carter Final Option 201
Hilltop Final Option 5297
 #Hilltop Shoshone 273
 S A V Registry 2831
Corey A Posey Star 544
 Corey A Posey Star 605S

%IMF	3.83
%IMF RATIO	86
REA	15
REA RATIO	117
RIB FAT	0.21
RUMP FAT	0.3

CED	BW	WW	Milk	YW	SC	Marb	RE	Fat	\$W	\$F	\$G	\$B
-2	+3.4	+57	+24	+97	+1.4	+2.3	+0.82	-0.028	+55.17	+52.61	+28.01	+129.5

- Individual Performance: WR@104 and YR@105
- Out of a first calf heifer.
- Top 10% for RE, Fat and \$QG, top 15% for SC and top 25% for CW

Lot 48 NA FINAL OPTION 778

DOB: 02/13/17 • Reg: 18976887 • Tattoo: 778



BW	69
Act WW	690
Adj 205	724
Adj 365	1191
Scrotal	34

Carter Final Option 201
Hilltop Final Option 5297
 #Hilltop Shoshone 273
 GDAR CJD Alliance 0714
NA Miss Image JCN 509
 NA Miss Image JCN 315

%IMF	5.11
%IMF RATIO	113
REA	11.9
REA RATIO	93
RIB FAT	0.25
RUMP FAT	0.32

CED	BW	WW	Milk	YW	SC	Marb	RE	Fat	\$W	\$F	\$G	\$B
+8	-1.7	+61	+33	+102	+0.5	+6.0	+0.41	+0.035	+78.79	+55.48	+32.77	+120.78

- HEIFER BULL
- Individual Performance: BR@87, WR@99 and YR@96
- Out of a first calf heifer
- Top 2% for \$W, top 4% for BW and Milk, top 20% for WW and Doc and top 25% for YW

Lot 49 NA WAYLON 793

DOB: 02/25/17 • Reg: 18978433 • Tattoo: 793



BW	90
Act WW	688
Adj 205	717
Adj 365	1176
Scrotal	40

Baldrige Waylon W34
McD SF Waylon 4550
 SF Forevre Lady 6200
 A A R Hilger 1110
NA Miss Anna 441
 NA Miss Anna 255

%IMF	4.95
%IMF RATIO	111
REA	13.5
REA RATIO	105
RIB FAT	0.19
RUMP FAT	0.30

CED	BW	WW	Milk	YW	SC	Marb	RE	Fat	\$W	\$F	\$G	\$B
+3	+1.3	+53	+25	+94	+0.52	+7.4	+0.65	-0.021	+54.85	+52.97	+46.74	+137.52

- Individual Performance: WR@98 and YR@95
- Ranks in the top 10% for \$G, top 15% for Fat and \$YG, top 20% for \$QG and \$B, top 25% for Marb and RE

Lot 50 NA WAYLON 794

DOB: 02/26/17 • Reg: 18978432 • Tattoo: 794



BW	93
Act WW	680
Adj 205	703
Adj 365	1252
Scrotal	35

Baldrige Waylon W34
McD SF Waylon 4550
 SF Forevre Lady 6200
 Sitz Onward 9007
NA Miss Anna 352A
 NA Miss Frontier Anna 5533

%IMF	3.86
%IMF RATIO	87
REA	11.9
REA RATIO	94
RIB FAT	0.22
RUMP FAT	0.21

CED	BW	WW	Milk	YW	SC	Marb	RE	Fat	\$W	\$F	\$G	\$B
-2	+2.6	+66	+8	+109	+0.44	+2.3	+0.60	-0.035	+44.16	+65.65	+26.38	+126.32

- Individual Performance: WR@97 and YR@102
- Dam's Production: 2 WR@100 and 2 %IMF@93
- Ranks in the top 4% for Fat, top 10% for WW and \$EN, top 15% for YW and \$YG, top 20% for \$F and top 25% for Doc and MW

Lot 51 NA COPYRIGHT 7101

DOB: 03/03/17 • Reg: 18978456 • Tattoo: 7101 • OHP



BW	82
Act WW	667
Adj 205	740
Adj 365	1233
Scrotal	36.5

#A A R Ten X 7008 S A
TLC Copyright 358
 C C A Countess 081
 #Mytty In Focus
Brusett Longterm Q748
 Brusett Longterm 516

%IMF	4.27
%IMF RATIO	96
REA	10.9
REA RATIO	100
RIB FAT	0.25
RUMP FAT	0.30

CED	BW	WW	Milk	YW	SC	Marb	RE	Fat	\$W	\$F	\$G	\$B
+12	-0.4	+57	+27	+101	+2.15	+0.44	+0.08	+0.044	+62.14	+55.64	+20.07	+109.44

- HEIFER BULL
- Twin
- Individual Performance: WR@102 and YR@100
- Dam's Production: 7 BR@94, 7 WR@97, 5 YR@106, 4 %IMF@96 and 4 REA@95
- Top 1% for SC, top 3% for CEM, top 10% for CED, top 15% for BW and \$W

Lot 52 NA COPYRIGHT 7121

DOB: 03/22/17 • Reg: 18976879 • Tattoo: 7121



BW	80
Act WW	674
Adj 205	747
Adj 365	1201
Scrotal	34.5

#A A R Ten X 7008 S A
TLC Copyright 358
 C C A Countess 081
 Sitz Onward 9007
NA Emma 216Z
 Sitz Emma 734R

%IMF	5.58
%IMF RATIO	NA
REA	12.5
REA RATIO	NA
RIB FAT	0.27
RUMP FAT	0.27

CED	BW	WW	Milk	YW	SC	Marb	RE	Fat	\$W	\$F	\$G	\$B
+13	+0.3	+68	+30	+120	+1.94	+8.1	+0.39	+0.009	+72.10	+77.22	+38.05	+155.78

- HEIFER BULL
- Individual Performance: BR@91, WR@103 and YR@97
- Dam's Production: 2 BR@97, 2 WR@108, 1 %IMF@111 and 1 REA@119
- Top 3% for SC and CEM, top 4% for \$W, top 5% for CED and CW, top 10% for WW, YW, Doc, Milk and \$B, top 20% for Marb and top 25% for BW and HP

Lot 53 NA FINAL OPTION 7120

DOB: 03/21/17 • Reg: 18976885 • Tattoo: 7120



BW	93
Act WW	653
Adj 205	742
Adj 365	1291
Scrotal	36.5

Carter Final Option 201
Hilltop Final Option 5350
 #Hilltop Blackbird GP 09
 GDAR CJD Alliance 0714
NA Miss Wyona 423
 NA Miss Wyona 0066

%IMF	3.42
%IMF RATIO	NA
REA	11.4
REA RATIO	NA
RIB FAT	0.24
RUMP FAT	0.23

CED	BW	WW	Milk	YW	SC	Marb	RE	Fat	\$W	\$F	\$G	\$B
-2	+2.4	+65	+31	+116	+0.96	+3.9	+0.45	+0.009	+70.06	+81.82	+26.81	+136.92

- Individual Performance: WR@102 and YR@105
- Dam's Production: 2 WR@103 and 1 REA@106
- Ranks in the top 5% for \$W, top 10% for WW, YW, Milk and \$F and top 25% for \$B
- 3/4 BROTHER TO IOTS 54 & 19

Lot 54 NA FINAL OPTION 7110

DOB: 03/11/17 • Reg: 18978455 • Tattoo: 7110



BW	73
Act WW	602
Adj 205	693
Adj 365	1144
Scrotal	37

Carter Final Option 201
Hilltop Final Option 5350
 #Hilltop Blackbird GP 09
 GDAR CJD Alliance 0714
NA Lass 437
 NA Pendleton Lass 0002

%IMF	4.29
%IMF RATIO	97
REA	10.4
REA RATIO	110
RIB FAT	0.27
RUMP FAT	0.30

CED	BW	WW	Milk	YW	SC	Marb	RE	Fat	\$W	\$F	\$G	\$B
+6	+0.3	+51	+28	+99	+0.93	+5.1	+0.27	+0.033	+53.01	+75.57	+26.36	+144.23

- HEIFER BULL
- Twin
- Individual Performance: BR@91, WR@95 and YR@93
- Top 15% for CEM, \$F and \$B, top 20% for Milk and top 25% for BW and CW
- 3/4 brother to Lots 53 & 19



LOT 55

NA ALLIANCE 626D

DOB: 08/19/16 • Reg: 18997204 • Tattoo: 626D



GDAR CJD Alliance 0714
NA Alliance JCN 204Z
 NA Miss Image JCN 0009

NA Charge On 902
#NA Miss Play On 111Y
 NA Miss Duke's Play 609S

BW	86
Act WW	648
3/8 WT	1546
Scrotal	40



CED	BW	WW	Milk	YW	SC	Marb	RE	Fat	\$W	\$F	\$G	\$B
+7	+0.2	+54	+33	+91	-.02	+0.55	+0.26	+0.040	+66.88	+40.73	+29.16	+104.77

- Suitable for use on larger framed heifers
- Individual Performance: WR@122 and YR@109
- Dam's Production: 4 WR@114, 3 YR@105
- Ranks in the top 4% of the breed for Milk, top 10% for \$W, top 25 for BW and HP
- 3/4 brother to Lot 56



LOT 55

LOT 56

NA ALLIANCE 617D

DOB: 08/14/16 • Reg: 18997202 • Tattoo: 617D



GDAR CJD Alliance 0714
NA Alliance JCN 204Z
 NA Miss Image JCN 0009

NA Charge On 902
NA Miss Blackberry Rose 144Y
 NA Miss Blackberry Rose 3203

BW	89
Act WW	622
3/8 WT	1676
Scrotal	42



CED	BW	WW	Milk	YW	SC	Marb	RE	Fat	\$W	\$F	\$G	\$B
+8	+0.4	+46	+34	+81	+0.7	+0.58	+0.29	+0.027	+59.72	+29.40	+31.79	+112.37

- Individual Performance: WR@115 and YR@114
- Dam's Production: 4 WR@107 and 3 YR@104
- Top 3% for Milk, top 20% for Doc and \$W and top 30% for BW
- 3/4 brother to Lot 55



LOT 56

LOT 57

NA ALLIANCE 620D

DOB: 08/17/16 • Reg: 18997203 • Tattoo: 620D



GDAR CJD Alliance 0714
NA Alliance JCN 204Z
 NA Miss Image JCN 0009

#G A R Predestined
SD Blackcap X653
 #Bar S Blackcap 3153

BW	78
Act WW	607
3/8 WT	1511
Scrotal	35.5



CED	BW	WW	Milk	YW	SC	Marb	RE	Fat	\$W	\$F	\$G	\$B
+14	-0.5	+47	+20	+87	-0.24	+0.86	+0.20	+0.035	+52.81	+36.11	+40.30	+94.00

- HEIFER BULL
- Individual Performance: BR@92, WR@114 and YR@100
- Dam's Production: 2 BR@93, 3 WR@107 and 2 YR@103
- Ranks in the top 3% for CED, top 10% for \$EN, top 15% for BW, Marb and \$QG and top 25% for \$G

LOT 58

NA ALLIANCE 607D

DOB: 08/07/16 • Reg: 18997197 • Tattoo: 607D



Sitz Alliance 7487
GDAR CJD Alliance 0714
 GDAR CJD Kem 8602

NA Charge On 902
NA Miss Whitney 140Y

NA Famous Whitney 1212 of YR

BW	82
Act WW	602
3/8 WT	1530
Scrotal	36



CED	BW	WW	Milk	YW	SC	Marb	RE	Fat	\$W	\$F	\$G	\$B
+8	+0.7	+44	+28	+85	+0.13	+0.31	+0.4	+0.001	+44.90	+28.24	+26.53	+86.49

- HEIFER BULL
- Individual Performance: BR@96, WR@109 and YR@103
- Dam's Production: 4 BR@97, 4 WR@101
- Top 10% for YH, top 15% for Doc and top 20% for Milk

GDAR CJD ALLIANCE 0714 - SIRE OF LOTS 58-61, 63, 70-71 & 75



5N

LOT 59

NA ALLIANCE 627D

DOB: 08/16/16 • Reg: 18997205 • Tattoo: 627D



Sitz Alliance 7487
GDAR CJD Alliance 0714
 GDAR CJD Kem 8602

Shamrocks Direction 006 E9P
NA Miss Lucky Pride 8855
 NA Miss Pride 3202

BW	88
Act WW	581
3/8 WT	1524
Scrotal	39.5



CED	BW	WW	Milk	YW	SC	Marb	RE	Fat	\$W	\$F	\$G	\$B
+4	+2.0	+61	+39	+114	+1.07	+0.79	+0.6	+0.01	+73.11	+68.01	+39.01	+161.86

- Individual Performance: WR@108 and YR@106
- Dam's Production: 7 WR@105 and 3 YR@100
- Ranks in the top 1% of the breed for Milk, top 2% for CW, top 4% for \$W, top 5% for \$B, top 10% for YW and YH, and top 20% for WW, Marb and \$F

Lot **60** **NA ALLIANCE 609D**

DOB: 08/08/16 • Reg: 18997198 • Tattoo: 609D



Sitz Alliance 7487
GDAR CJD Alliance 0714
GDAR CJD Kem 8602

#S A V Final Answer 0035
SD Chloe 953
SD Chloe 075

BW	76
Act WW	576
3/8 WT	1611
Scrotal	43.5



CED	BW	WW	Milk	YW	SC	Marb	RE	Fat	\$W	\$F	\$G	\$B
+8	+0.2	+63	+38	+115	+2.14	+0.35	+0.14	+0.057	+76.95	+72.26	+11.45	+122.03

- HEIFER BULL
- Individual Performance: BR@89, WR@105 and YR@110
- Dam's Production: 2 WR@109 and 2 YR@113
- Top 1% for SC and Milk, top 2% for \$W, top 10% for YW and CW, top 15% for WW and \$F, and top 25% for BW



LOT 60

Lot **61** **NA ALLIANCE 638D**

DOB: 08/28/16 • Reg: 18997210 • Tattoo: 638D



Sitz Alliance 7487
GDAR CJD Alliance 0714
GDAR CJD Kem 8602

KG Wisdom 9366
NA Miss Blackcap 150Y
NA Miss Blackcap 605S

BW	88
Act WW	581
3/8 WT	1600
Scrotal	37.5



CED	BW	WW	Milk	YW	SC	Marb	RE	Fat	\$W	\$F	\$G	\$B
+0	+2.0	+63	+26	+124	+0.80	+0.52	+0.44	+0.022	+58.01	+96.50	+27.01	+160.21

- Individual Performance: WR@114 and YR@111
- Dam's Production: 4 WR@104 and 2 YR@106
- Top 3% for CW and \$F, top 4% for YW, top 5% for \$B, top 15% for WW and top 20% for \$W

Lot **62** **NA ALLIANCE 632D**

DOB: 08/22/16 • Reg: 18997208 • Tattoo: 632D • OHP



GDAR CJD Alliance 0714
NA Alliance JCN 204Z
NA Miss Image JCN 0009

KG Wisdom 9366
NA Miss Sana 240Z
NA Miss Sana Play 4244

BW	83
Act WW	571
3/8 WT	1460
Scrotal	32



CED	BW	WW	Milk	YW	SC	Marb	RE	Fat	\$W	\$F	\$G	\$B
+1	+2	+52	+26	+101	+0.80	+0.5	+0.18	+0.043	+49.53	+53.46	+23.45	+113.27

- Individual Performance: BR@99, WR@112 and YR@107
- Ranks in the top 30% of the breed for YW, Milk and CW



LOT 62

NA ALLIANCE JCN 204Z - SIRE OF LOTS 55-57, 62, 64-69 & 72-74



Lot **63** **NA ALLIANCE 633D**

DOB: 08/23/16 • Reg: 18997209 • Tattoo: 633D • OHP



Sitz Alliance 7487
GDAR CJD Alliance 0714
GDAR CJD Kem 8602

Sitz Onward 9007
NA Miss Sana 121Y
NA Miss Sana Play 4244

BW	85
Act WW	546
3/8 WT	1486
Scrotal	38



CED	BW	WW	Milk	YW	SC	Marb	RE	Fat	\$W	\$F	\$G	\$B
+9	+0.9	+45	+27	+89	+0.37	+0.28	+0.37	+0.035	+46.77	+27.46	+19.97	+82.13

- HEIFER BULL
- Individual Performance: BR@100, WR@105 and YR@98
- Dam's Production: 3 BR@97, 3 WR@101 and 1 YR@98
- Ranks in the top 10% for YH and Doc, top 20% for CEM and top 25% for CED and Milk



LOT 64

Lot **64** **NA ALLIANCE 653D**

DOB: 09/10/16 • Reg: 18997214 • Tattoo: 653D



GDAR CJD Alliance 0714
NA Alliance JCN 204Z
 NA Miss Image JCN 0009



Sitz Onward 9007
#NA Lucy 200Z
 #NA Forward Lucy 4149

BW	87
Act WW	551
3/8 WT	1558
Scrotal	36.5

CED	BW	WW	Milk	YW	SC	Marb	RE	Fat	\$W	\$F	\$G	\$B
+7	-0.2	+48	+33	+103	+0.33	+0.60	+0.29	+0.010	+54.02	+62.36	+32.58	+132.89

- Suitable for use on larger framed heifers
- Individual Performance: WR@116 and YR@110
- Dam's Production: 3 WR@108 and 2 YR@104
- Top 4% of the breed for Milk, top 20% for BW and CW, top 25% for YW, \$F and \$B and top 30% for \$W
- 3/4 brother to Lot 65

Lot **65** **NA ALLIANCE 656D**

DOB: 09/12/16 • Reg: 18997216 • Tattoo: 656D



GDAR CJD Alliance 0714
NA Alliance JCN 204Z
 NA Miss Image JCN 0009



Sitz Onward 9007
NA Miss Whitney 9933
 NA Miss Whitney Design 4205

BW	86
Act WW	515
3/8 WT	1525
Scrotal	38.5

CED	BW	WW	Milk	YW	SC	Marb	RE	Fat	\$W	\$F	\$G	\$B
+9	-0.6	+43	+29	+86	+0.56	+0.25	+0.31	+0.012	+51.39	+51.32	+19.00	+121.95

- Suitable for use on larger framed heifers
- Individual Performance: WR@107 and YR@104
- Dam's Production: 5 BR@97, 5 WR@95 and 2 YR@102
- Top 3% of the breed for Doc, top 15% for BW and Milk and top 25% for CED
- 3/4 brother to Lot 64



Lot **66** **NA ALLIANCE 650D**

DOB: 09/07/16 • Reg: 18997213 • Tattoo: 650D



GDAR CJD Alliance 0714
NA Alliance JCN 204Z
 NA Miss Image JCN 0009



Sitz Onward 9007
NA Miss Image JCN 0009
 NA Miss Image Maker JN 5515

BW	84
Act WW	510
3/8 WT	1480
Scrotal	39

CED	BW	WW	Milk	YW	SC	Marb	RE	Fat	\$W	\$F	\$G	\$B
+12	-0.3	+52	+31	+94	+1.15	+0.71	+0.23	+0.035	+60.56	+40.70	+31.96	+124.70

- Individual Performance: BR@99, WR@104 and YR@98
- Dam's Production: 4 BR@98, 4 WR@114 and 2 YR@111
- Ranks in the top 1% for Doc, top 10% for CED and Milk, top 20% for BW and YH, top 25% for SC and QG

Lot **67** **NA ALLIANCE 615D**

DOB: 08/14/16 • Reg: 18997201 • Tattoo: 615D



GDAR CJD Alliance 0714
NA Alliance JCN 204Z
 NA Miss Image JCN 0009



#Basin Payweight 006S
Basin Pride 0078
 #Basin Pride S169

BW	92
Act WW	541
3/8 WT	1519
Scrotal	40

CED	BW	WW	Milk	YW	SC	Marb	RE	Fat	\$W	\$F	\$G	\$B
+6	+1.1	+56	+26	+111	+1.73	+0.18	+0.44	+0.028	+56.02	+83.21	+11.36	+143.62

- Individual Performance: WR@100 and YR@106
- Dam's Production: 3 WR@99 and 2 YR@106
- Top 4% for CW, top 5% for SC, top 10% for YH and \$F, top 15% for \$B and YW and top 25% for \$W
- 3/4 brother to Lot 73



LOT 68

Lot **68** **NA ALLIANCE 654D**

DOB: 09/11/16 • Reg: 18997215 • Tattoo: 654D



GDAR CJD Alliance 0714
NA Alliance JCN 204Z
 NA Miss Image JCN 0009



#B/R New Frontier 095
NA Miss Frontier Anna 5533
 NA Miss Sana Anna 2205

BW	89
Act WW	479
3/8 WT	1436
Scrotal	37

CED	BW	WW	Milk	YW	SC	Marb	RE	Fat	\$W	\$F	\$G	\$B
+4	+1.5	+45	+31	+94	+0.61	+0.54	+0.27	+0.013	+49.04	+59.43	+29.69	+138.8

- Individual Performance: WR@103 and YR@106
- Dam's Production: 8 WR@105 and 6 YR@107
- Ranks in the top 10% of the breed for Milk, top 20% for CW and \$B, top 25% for HP and top 30% for \$F

Lot 69 NA ALLIANCE 645D

DOB: 08/24/16 • Reg: 18997211 • Tattoo: 645D



GDAR CJD Alliance 0714
NA Alliance JCN 204Z
 NA Miss Image JCN 0009

BW	85
Act WW	536
3/8 WT	1445
Scrotal	37.5



#Sitz Alliance 6595
#NA Beebe Queen 601S
 Sitz Beebe Queen 1725

CED	BW	WW	Milk	YW	SC	Marb	RE	Fat	\$W	\$F	\$G	\$B
+10	-0.8	+38	+34	+79	+0.83	+0.62	+0.03	+0.063	+47.22	+34.09	+25.79	+90.42

- HEIFER BULL
- Individual Performance: WR@107 and YR@98
- Dam's Production: 9 BR@93, 9 WR@105 and 8 YR@103
- Top 3% of the breed for Milk, top 10% for BW, top 15% for Doc, top 20% for CED and CEM and top 25% for YH

Lot 71 NA ALLIANCE 611D

DOB: 08/11/16 • Reg: 18997199 • Tattoo: 611D • OHP



Sitz Alliance 7487
GDAR CJD Alliance 0714
 GDAR CJD Kem 8602

BW	92
Act WW	551
3/8 WT	1430
Scrotal	40.5



S A V Homesteader 7282
SD Blackcap 86178
 SD Blackcap 980

CED	BW	WW	Milk	YW	SC	Marb	RE	Fat	\$W	\$F	\$G	\$B
+1	+2.7	+60	+30	+105	+0.59	+0.29	+0.20	+0.069	+65.05	+66.38	+9.02	+119.07

- Individual Performance: WR@101 and YR@102
- Dam's Production: 2 WR@106 and 1 YR@102
- Ranks in the top 10% for Milk and \$W, top 20% for WW, YW, CW and \$F and top 25% for YH

Lot 70 NA ALLIANCE 659D

DOB: 09/15/16 • Reg: 18997217 • Tattoo: 659D



Sitz Alliance 7487
GDAR CJD Alliance 0714
 GDAR CJD Kem 8602

BW	90
Act WW	515
3/8 WT	1460
Scrotal	40



Wards Freightliner 116
#NA Bodner Lass 5214
 BA RR Lass 1214

CED	BW	WW	Milk	YW	SC	Marb	RE	Fat	\$W	\$F	\$G	\$B
+0	+2.9	+64	+28	+120	+0.72	+0.37	+0.35	+0.011	+57.52	+90.6	+21.99	+149.69

- Individual Performance: WR@113 and YR@106
- Dam's Production: 10 WR@106 and 9 YR@105
- Ranks in the top 4% for \$F, top 10% for YW and CW, top 15% for WW and \$B, top 20% for Milk and top 25% for \$W



Lot 72 NA ALLIANCE 648D

DOB: 09/04/16 • Reg: 18997212 • Tattoo: 648D



GDAR CJD Alliance 0714
NA Alliance JCN 204Z
 NA Miss Image JCN 0009

BW	85
Act WW	541
3/8 WT	1418
Scrotal	38.5



#H A Image Maker 0415
#NA Bridgets Image 7713
 NA Miss Bridget 1209

CED	BW	WW	Milk	YW	SC	Marb	RE	Fat	\$W	\$F	\$G	\$B
+11	+0.9	+57	+34	+100	+0.28	+0.12	+0.31	+0.044	+67.77	+46.16	+9.49	+80.99

- HEIFER BULL
- Individual Performance: WR@109 and YR@100
- Dam's Production: 7 BR@94, 7 WR@109 and 6 YR@106
- Top 3% of the breed for Milk, top 10% for \$W and top 15% for CED

Lot 73 NA ALLIANCE 631D

DOB: 08/22/16 • Reg: 18997207 • Tattoo: 631D



GDAR CJD Alliance 0714
NA Alliance JCN 204Z
 NA Miss Image JCN 0009

BW	80
Act WW	530
3/8 WT	1425
Scrotal	41.5



#Basin Payweight 006S
NA Miss Anna 105Y
 NA Miss Anna 9935

CED	BW	WW	Milk	YW	SC	Marb	RE	Fat	\$W	\$F	\$G	\$B
+2	+1.9	+45	+29	+80	+0.27	+0.80	+0.44	+0.009	+52.19	+37.26	+45.52	+105.25

- Individual Performance: BR@94, WR@101 and YR@100
- Dam's Production: 3 WR@102 and 1 YR@100
- Top 15% for Milk, \$G and \$QG, top 20% for Marb and top 30% for Doc
- 3/4 brother to Lot 67

Lot 74 NA ALLIANCE 641D

DOB: 08/28/16 • Reg: 19023916 • Tattoo: 641D • OSF



GDAR CJD Alliance 0714
NA Alliance JCN 204Z
 NA Miss Image JCN 0009

BW	78
Act WW	474
3/8 WT	1356
Scrotal	39.5



H S A F Traveler 8180-504C
NA Miss Sana Anna 4240
 NA Miss Playmate 0211

CED	BW	WW	Milk	YW	SC	Marb	RE	Fat	\$W	\$F	\$G	\$B
+6	+1.6	+35	+23	+64	+0.71	+0.55	+0.2	+0.022	+32.36	+17.13	+31.4	+105.8

- Individual Performance: BR@93, WR@97 and YR@92
- Dam's Production: 10 WR@98 and 6 YR@98
- Ranks in the top 3% for YH and top 15% for HP and \$EN



Sitz Alliance 7487
GDAR CJD Alliance 0714
GDAR CJD Kem 8602

FF Positive Direction N54
FF Primrose Pride U27
FF Heidi N50



BW	84
Act WW	495
3/8 WT	1450
Scrotal	39

CED	BW	WW	Milk	YW	SC	Marb	RE	Fat	\$W	\$F	\$G	\$B
+3	+2.8	+57	+35	+103	+0.93	+0.44	+0.38	+0.006	+59.26	+67.17	+29.20	+132.64

- Individual Performance: BR@99, WR@108 and YR@105
- Dam's Production: 6 BR@94, 6 WR@103 and 5 YR@99
- Top 2% of the breed for Milk, top 20% for YH, \$W and \$F, top 25% for YW and top 30% for CW and \$B



Baldrige Waylon W34
McD SF Waylon 4550
SF Forevre Lady 6200

A A R Hilger 1110
NA Lady 427B
NA Miss Anna 211Z



BW	84
Act WW	479
3/8 WT	1405
Scrotal	35

CED	BW	WW	Milk	YW	SC	Marb	RE	Fat	\$W	\$F	\$G	\$B
+1	+3.5	+60	+25	+101	-0.03	+0.69	+0.12	+0.012	+53.92	+54.36	+37.47	+125.25

- Individual Performance: WR@98 and YR@93
- Out of a first calf heifer
- Top 20% for WW, YH and Fat, top 25% for \$QG and top 30% for YW and \$W

SPRING BULLS VS. FALL BULLS

When comparing fall born bulls to spring born bulls, several factors need to be taken into consideration to account for the differences in weaning weights and growth patterns. Our fall calving program begins around August 15th. Those bulls are raised on cured-out grass along with mother's milk and hay through the winter (no creep). They are weaned the end of March, before any green grass is available for growth.

On the other hand, our spring born bulls are grown out on green grass, providing them with the opportunity for greater growth potential. From our management experience, in order to level the playing field between the fall born bulls and spring born bulls, you have to take into account that the fall bulls' 205 day weights will normally be at least 100-125 lbs lighter than the spring bulls' 205 day weights.

The fall bulls will also show a difference in carcass data compared to the spring bulls due to the difference in feed and season of growth pattern. The fall bulls are going through their growth during the winter and early spring. In previous years, the fall bulls are only on a growth ration for a short time before being ultrasounded. We feel that this led to skewed data, giving the impression that the fall group was of poorer carcass merit when compared to the spring group. One of our main reasons for Zoetis i50K testing our entire sale offering was to eliminate misconception and scan data variance.

We feel the i50K test provides us and our customers with more accurate and reliable predictors for both our fall and spring born bulls.

*Thank you for coming to the sale!
We appreciate your support and value your business.
We hope 2018 proves to be a successful year for your operation.
See ya next year!*



A Special Thanks....

We are so fortunate to be surrounded by family and friends that are willing and ready to help whenever we give them a call. We appreciate all they do for us and our kids. We could not do what we love to do without them.

Alan & Rachel Weaver - Christie's parents have helped us out a great deal in the past few years. Whether it is taking the kids for the weekend or helping work cows, they never turn us down when we ask. Life is always good at Grandma and Grandpa's!

Mike Nissen - Jeff's brother keeps everything going at the farm in Harlem all year round and helps us feed in the winter. He was a lifesaver this winter for plowing all the snow that he did - clearing roads and paths for the cows. We can't thank him enough for all he does for us.

Brad Weaver - Christie's brother is always a reliable source of extra help. From farming, to working cows to helping take pictures, he always takes time out of his busy schedule to help us out and we sure appreciate it.

Bronc Speak Thunder - Bronc is a good friend and great hand to have around. He helps us out a lot with cattle work and anytime we need an extra hand.

Bob & Cindy Berg - Jeff's sister and brother-in-law are always on hand to help with the sale and any other task we ask of them. Cindy's cooking is second to none and we are fortunate to have her and Bob handle the details for the meal and refreshments at the sale. The kids are always excited to see Uncle Bobby and Auntie Cindy!

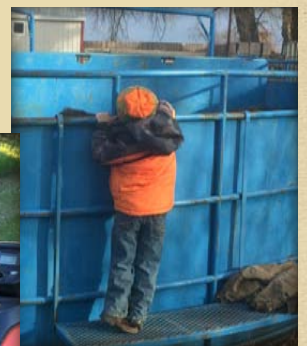
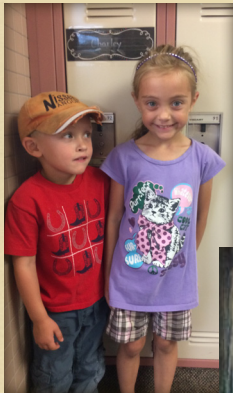
Jim & Louise Nissen - Jeff's uncle and aunt watch the kids from time to time and Jim helps with the cattle when we need an extra hand. The kids love spending time at Auntie and Uncle's.

Bill & Duan Drugge - We've been blessed with the opportunity to get to know and work with Bill and Duan, their family and their operation. They are like grandparents to our children and we appreciate all they do for us.

Carol March and Samantha Weaver - Our sister-in-laws are always on hand to help out whenever we ask. From sale day food service to watching kids, we are grateful to have them around

Lane, Taryn and Scott - We put these three to work every chance we get. They are great help and good company.

*To everyone else that helps out throughout the year and during the sale - thank you!
We appreciate it more than you'll ever know.*



*The mud will wash off
but the memories will last a lifetime.*



Nissen Angus Inc.
Jeff & Christie Nissen
PO Box 1508
Chinook, MT 59523

POSTMASTER: TIME DATED MATERIAL
RETURN SERVICE REQUESTED

PRESORTED
FIRST-CLASS MAIL
U.S. POSTAGE PAID
LivestockDirect
PERMIT NO. 29

www.nissenangus.com

