



Nissen

ANGUS^{INC}

Annual Production Sale

WEDNESDAY

APRIL 1, 2020

BLAINE COUNTY FAIRGROUNDS - CHINOOK, MT
LUNCH AT 11:30 - SALE AT 1:00

With Special Guest Schmitt Angus

Annual Production Sale
Wednesday - April 1, 2020
Blaine County Fairgrounds • Chinook, MT
Lunch at 11:30 • Sale at 1:00

SALE DAY PHONES

Jeff's Cell 406-949-1101
Christie's Cell 406-262-4125
Lane's Cell 406-390-2275

SALE DAY CONFERENCE CALL

Bill Pelton will be conducting a sale day conference call for any buyers that are unable to attend the sale. Please see the ad on this page for instructions.

AUCTIONEER

Roger Jacobs 406-698-7686

SPECIAL REPRESENTATIVES

Kurt Kangas 406-366-4190
John Goggins 406-698-4159
Bill Pelton 406-671-5100

SIGHT UNSEEN GUARANTEE

Absentee bidding can be made in confidence with any representative, the auctioneer or directly with Nissen Angus or Schmitt Angus.

We guarantee 100% satisfaction on all purchases.

INSPECTION

The bulls are on feed and available for viewing at Hould Bull Development Center, located at 5867 Hwy 363 southwest of Malta, MT. They will be available for inspection at the Blaine County Fairgrounds in Chinook, MT starting the afternoon of Monday, March 30th.

HEALTH

All bulls have been semen tested and given a complete breeding physical by Dr. Bob Schmitt of Chinook Veterinary Clinic, (406)357-2850. They are current on immunizations, have been vaccinated with Fusoguard for footrot, Maxi/Guard for pinkeye and tested negative for BVD-PI.

TERMS AND CONDITIONS

This sale is being conducted under the suggested sale terms and conditions adopted by the American Angus Association. Announcements from the auction block take precedence over the information in this catalog. Settlement must be at time of sale unless prior arrangements have been made with the owners.

SALE ORDER

Bulls will sell in catalog order.

FIRST SEASON BREEDING GUARANTEE

Bulls are guaranteed to be sound and healthy breeders with a first breeding season guarantee. Breeding season is defined as the first 60 days following turnout. All bulls selling will be given 50% of the value of the injured bull minus salvage value as credit in a future sale or towards a replacement bull if one is available. Please contact us as soon as possible should an injury occur.

RETAINED INTEREST

Nissen Angus and Schmitt Angus are retaining 1/3 revenue share on every bull sold in this sale. This allows for the right to share in the collection of semen and the right to share semen and certificate revenue should the opportunity arise. Full possession and full salvage value sells on all bulls.

TRUCKING AND DELIVERY

We will offer free delivery within Montana on all bulls purchased. Further distances will be billed at cost.

Buyers who pick up their bulls at the sale site on sale day or the day after will be given a \$50 rebate per bull.

PERFORMANCE INFORMATION

EPDs are current as of March 5, 2020. Updated EPDs can be viewed online at www.angus.org. All bulls selling were HD50K tested and their EPDs are genomically enhanced. All bulls were ultrasounded for carcass merit by AAA certified technician, Sonja Gregory.

ACCOMADATIONS

Chinook Motor Inn 406-357-2248
Bear Paw Court 406-357-2221

AIRPORT

Edgar G. Obie Airport - Located on the west side of Chinook. Please call 406-357-2643 in advance to make arrangements

LIABILITY

All persons who attend the sale do so at their own risk. Nissen Angus, Schmitt Angus and all other sale staff assume no liability, legal or otherwise.

SALE DAY CONFERENCE CALL

"Our goal is to get you in the seats but if you can't make it on sale day, we're fixin' to get you "on the line"

Easy as 1~2~3

Call **BILL PELTON** in Advance to ...

1. Pre-register for your buyer number	2. Receive toll free call in # and pin	3. Get last minute instructions for call
---------------------------------------	--	--

Check out our sale calendar at www.BILLPELTON.com LIKE US ON FACEBOOK!

T: 406-671-5100 | E: BILL@BILLPELTON.COM | 2966 HWY 78 ABSAROOKEE, MT 59001

VIDEOS OF THE BULLS ARE AVAILABLE AT

www.nissenangus.com





Jeff & Christie Nissen
406.357.2643 Home
406.949.1101 Jeff's Cell
406.262.4125 Christie's Cell
info@nissenangus.com
www.nissenangus.com

Hello Fellow Producers!

We'd like to invite you to our **Annual Production Sale on April 1, 2020 at the Blaine County Fairgrounds in Chinook, MT.** The bulls will be available at the fairgrounds for viewing on the afternoon of Monday, March 30th.

2019 proved to be another challenging winter here in the Milk River Valley. We were hit with temperatures well below zero for most of the month of February and the first part of March. Despite the difficult conditions, the calves came through and performed well for us this year. They had a slow start, but summer brought moisture at just the right times and by late August the calves really started to bloom. We feel this is one of our best offerings yet – these boys are one of the most even sets of yearling bulls we have ever raised.

As we continue to grow our herd, we are focusing on mother cows that exhibit performance, structural correctness, strong maternal traits and carcass ability - all in a low-input, practical package. We are working hard to provide our customers with low maintenance, highly functional cattle that perform and pay in pounds. Our customer's success is a direct reflection of our program's success and we place a big emphasis on making sure you are happy with your purchase.

All the bulls have been parent verified, carcass ultrasounded, performance and fertility tested. To provide you with the most predictable and accurate selection tools, **we have also HD50K tested every bull in our sale offering.** These genomic-enhanced EPDs offer increased predictability and valuable insight for the selection process. We have continued to ultrasound our bulls for carcass merit. We feel it's important to provide that data along with all the other selection tools as it gives you a complete representation of each bull's full potential.

The bulls are on feed at Hould Bull Development Center west of Malta, MT and available for you to view at any time. The bulls have been fed a high roughage ration to ensure soundness and longevity. All have been given Fusogard to help prevent footrot, Maxi/Guard for pinkeye and tested negative for BVD-PI. Our sincere thanks goes to Bruce, Linda, Lance and their crew for the great care they give these bulls. They are great to work with and always accommodate everyone's schedules and deadlines. It gives us a great peace of mind knowing our bulls are in such great hands.

Lane, Taryn and Scott Schmitt of Schmitt Angus continue to be our special guests and offer some of their own bulls for sale. Barb Korenjak of Corey A Ranch in Oregon partners on some cows with us and any bulls resulting from those cows will be offered in the sale. The Schmitt and Korenjak families are good friends and we are fortunate to have the opportunity to work with them.

We are blessed to be surrounded by family and friends who support us. We could not do what we love to do without them. Sale time is one of our most favorite times of the year and it is truly a family affair. We enjoy catching up with friends and family on sale day and invite you to join us for lunch and stay for our "friends and family" social after the sale.

Our sincere thanks for your friendship and support throughout the years – we look forward to working with you for many years to come. Please feel free to call us if you would like additional information on the bulls or if you have any questions about our program. Please stop by and view the sale offering and join us for lunch on April 1st. See you then!

Jeff, Christie, Charley & Tyson Nissen



*"Agriculture is our wisest pursuit,
because it will in the end contribute most to*

REAL WEALTH, GOOD MORALS and HAPPINESS."

Thomas Jefferson

BIRTH WEIGHT & CALVING EASE

University studies in Wyoming and data from Montana and Colorado lend credence to the following conclusions:

1. The birth weight itself influences calving ease by 65%.
2. The female has 60-70% influence on birth weight of her calf.
3. The bull has 30-40% influence on birth weight of his progeny.
4. Pelvic measurement and angle as well as the shape of the calf have 35-40% influence on calving ease.
5. Length of gestation greatly affects birth weight. A fetus can gain over one pound per day in the last days of gestation.
6. Weather and temperature the last 30 days affect the length of gestation.
7. Size and maturity of the cow influence calving ease.

Most commercial producers do not take birth weights. Guessing is as inaccurate as driving with a broken speedometer – what's thought to be 55 mph may in fact be 65 or 70 mpg, and what's thought to be 70-80 lb. may actually be 80-90 lb. Remember, everything is relevant. Increased growth, frame and performance will increase BW. A longer-bodied calf will weigh more. If a calf is expected to have genetics for growth, it will display this prior to birth as well as after. As a rule of thumb, it takes a calf weighing 85 lb. at birth to finish at 1200-1250 lb. A cow should easily give birth to a calf weighing 8% of her own body weight. Thus, a 1200 lb. cow should give birth to a 96 lb. calf with ease.

Continued selection for light birth weights will ultimately reduce the mature sizes and performance of your cattle.

The statement above has been published countless times in numerous catalogs and publications and we feel it does a great job illustrating the whole picture in regards to birthweight and calving ease.

While birth weight is always something to take into consideration, we feel that calving ease should be utilized just as much when selecting a bull. Those higher birthweight calves that calve easy and unassisted, thrive from the start and are at the top of the pack come weaning time.

Those are the ones that bring you the most bang for your buck when you are getting paid by the pound.

YOU'VE DONE THE WORK.

Get paid for it.



You've invested in good genetics.
You've kept all the records.

AngusLinkSM combines USDA Process Verified Programs with a Genetic Merit Scorecard that gives buyers confidence in your calves. From age and source verification to cattle care and handling, you choose which programs make the most sense for you.

Group Age & Source • Angus-Sired Genetics
Non-Hormone Treated Cattle • NeverEver³
Cattle Care & Handling • Calf Management •
*Genetic Merit ScorecardSM

*Optional, not part of the PVP claims

Easy and affordable, our customer service representatives walk you through the process.

ANGUSLINKSM
VALUE ADDED PROGRAMS

Call us at 816-383-5100 to sign up or
visit AngusLink.com for more information.

BW: Actual birth weight expressed in pounds.

Actual WW: Actual weaning weight taken right off off the cow, expressed in pounds.

Adj 205: Standardized weaning weight adjusted to calf age of 205 days and mature dam equivalent.

Adj. 365: Standardized yearling weight adjusted to calf age of 365 days and mature dam equivalent.

Scrotal: Actual scrotal measurement, expressed in centimeters, taken 2/25/2020.

%IMF: Percentage of fat in the ribeye area muscle (similar to marbling). The ultrasound field technician collects four images and the values generated by the interpreting software are averaged for an overall %IMF. Marbling directly contributes to beef palatability.

REA: Area of the longissimus muscle, measured in square inches. The trait is moderately to highly heritable and gives an indication of overall carcass muscling.

Rib Fat: An external fat measurement taken between the 12th and 13th ribs, measured in inches.

Rump Fat: An external lmeasurement taken between the hooks and pins, measured in inches. The rump fat and rib fat measurements are used to determine the overall external body fat.

NA PRAIRIE PRIDE 956
DOB: 2/1/2019 • Reg: 19608213 • Tattoo: 956

BW	79	Prairie Pride Premium 407	%IMF	6.05
Act WW	753	Hilltop Prairie Pride 4677	%IMF RATIO	131
Adj 205	700	#Hilltop Perfection MP 410	REA	13.3
Adj 365	1455	SandPoint Butkus X797	REA RATIO	106
Scrotal	34	GDAR Primrose Lady 62	RIB FAT	0.22
		#GDAR Primrose Lady 474	RUMP FAT	0.25

CED	BW	WW	Milk	YW	SC	Marb	RE	Fat	\$M	\$W	\$F	\$B
10	1	71	17	125	0.32	0.75	0.82	-0.008	42	64	96	160

Marb EPD: Expressed as a fraction of the difference in USDA marbling score of a sire's progeny compared to progeny of other sires.

RE EPD: Expressed in square inches, is a predictor of the difference in ribeye area of a sire's progeny compared to progeny of other sires.

Fat EPD: Expressed in inches, is a predictor of the differences in external fat thickness at the 12th rib (as measured between the 12th & 13th ribs) of a sire's progeny compared to progeny of other sires.

Calving Ease Direct (CED): Expressed as a difference in percentage of unassisted births, with a higher value indicating greater calving ease in first-calf heifers. It predicts the average difference in ease with which a sire's calves will be born when he is bred to first-calf heifers.

BW EPD: Expressed in pounds, is a predictor of a sire's ability to transmit birth weight to his progeny compared to that of other sires.

WW EPD: Expressed in pounds, is a predictor of a sire's ability to transmit weaning growth to his progeny compared to that of other sires.

Milk EPD: Is a predictor of a sire's genetic merit for milk and mothering ability as expressed in his daughters compared to daughters of other sires. In other words, it is that part of a calf's weaning weight attributed to milk and mothering ability.

WW EPD: Expressed in pounds, is a predictor of a sire's ability to transmit yearling growth to his progeny compared to that of other sires

SC EPD: Expressed in centimeters, is a predictor of the difference in transmitting ability for scrotal size compared to that of other sires.

\$Value Indexes: Reported in dollars per head, where a higher value is more favorable.

Maternal Weaned Calf Value (\$M): Expressed in dollars per head, predicts profitability differences in progeny due to genetics from conception to weaning.

Weaned Calf Value (\$W): Expressed in dollars per head, is the expected average difference in future progeny performance for pre-weaning merit. \$W includes both revenue and cost adjustments associated with differences in birth weight, weaning direct growth, maternal milk and mature cow size.

Feedlot Value (\$F): Expressed in dollars per head, is the expected average difference in future progeny performance for postweaning merit compared to progeny of other sires.

Beef Value (\$B): Expressed in dollars per head, is the expected average difference in future progeny performance for postweaning and carcass value compared to progeny of other sires. The \$B combines the contributions of \$F and \$G.



The Targeting the Brand logo is designed to highlight registered Angus bulls with greater genetic potential to produce calves meeting the most challenging specifications of the Certified Angus Beef® brand. Bulls must meet genetic requirements of +0.54 Marbling EPD and +46 \$ Grid of non-parent Angus sires to qualify for use of the Targeting the Brand™ logo.

Reference Sires

15 Sons Sell

S FOUNDATION 514

+18200213 • 2/19/2015

Gambles Royal Flush
Visiontopline Royal Stockman
LaGrand Pride 7140

Vision Unanimous 1418

#Boyd On Target 1083
#Vision Edella 665
Vision Edella 337

#S Lady Ann 8384

S Alliance 3313
#S Chisum 6175
#S Gloria 464
#Connealy Freightliner
S Lady Ann 6325
S Lady Ann 4327



CED	BW	WW	MILK	YW	SC	CW	Marb	RE	Fat	\$M	\$W	\$F	\$B
+6	+0.9	+53	+17	+92	+1.89	+36	+68	+20	+0.36	+75	+50	+66	+113

We like the outcross pedigree that S Fountaion 514 has to offer. His performance and phenotype are easy to admire and his calves catch your eye. They hit the ground running and are powerful standouts from day one. We calved our first set of daughters this year and they are good mothers with beautiful udders, plenty of milk and calm demeanors.

ELLINGSON HOMESTEAD 6030

+18543019 • 2/20/2016

#Baldridge Kaboom K243 KCF
#Connealy Thunder
#Parka of Conanga 241

CTS Remedy 1T01

#L T 598 Bando 9074
CTS 7V03 Bellemere Maid 9T02
SVA Rita 7V03 of 1407 502

EA Erica 1082

#Sitz Tradition RLS 8702
#LT Territory 5824 of EA
EA Lucy 141
#Sitz Alliance 6595
SAV Alliance 2606
JJR Erica 18K



CED	BW	WW	MILK	YW	SC	CW	Marb	RE	Fat	\$M	\$W	\$F	\$B
+1	+1.5	+73	+27	+147	+1.12	+58	+44	+52	+0.37	+57	-69	+113	+153

We chose Homestead as an AI sire because we like the functionality and performance he brings to the table. His spread from birth to weaning is impressive - 74 lb birthweight with a weaning weight of 925 lbs! Look for Homestead's progeny to improve structure, longevity and overall eye appeal in your herd

HILLTOP FINAL OPTION 5297

18282850 • 2/22/2015

Connealy Product 568
#Connealy Final Product
#Ebonista of Conanga 471

Carters Final Option 201

#Sitz Upward 307R
#Carter Lacey 2189
Carter Lacey 661

#Hilltop Shoshone 273

#Nichols Extra H6
Lyons Santa Fe 6119
Lyons Lady Allison 4348
#SAV Peacemaker 3179
Hilltop Shoshone 69
Hilltop Shoshone R19



CED	BW	WW	MILK	YW	SC	CW	Marb	RE	Fat	\$M	\$W	\$F	\$B
+10	-0.7	+67	+33	+116	+1.07	+47	+43	+75	-0.02	+64	+86	+72	+118

Hilltop Final Option 5297 was our top pick in the 2016 Hilltop Angus Ranch sale for \$17,000. He was chosen for his phenotype and performance. We really like the maternal power behind this bull as well. In Hilltop's 2017 sale, 5297's dam produced Hilltop Allied 6262 - the \$40,000 top selling. Genex roster member to Hollowtop Angus at Pony, MT.

NA REGISTRY 521

18386050 • 1/28/2015

CED	BW	WW	MILK	YW	SC	CW	Marb	RE	Fat	\$M	\$W	\$F	\$B
+6	+1.2	+64	+24	+114	+61	+53	+50	+38	+0.08	+38	+63	+102	+146

We retained an interest in this bull from our 2016 sale and used him natural service. His sons are some of our favorites - great eye appeal and packed full of muscle!

9 Sons Sell

Rito 707 if Ideal 3407 7075
SAV Registry 2831
SAV Madame Pride 0075
#SAV Final Answer 0035
HARB Ebony Erica 912
HARB Ebony Erica 413

CLEAR CREEK JET 645

18469819 • 1/30/2016

CED	BW	WW	MILK	YW	SC	CW	Marb	RE	Fat	\$M	\$W	\$F	\$B
+9	+0.2	+59	+35	+108	+35	+49	+35	+54	+0.23	+44	+71	+84	+121

We purchased this sire from Clear Creek Angus in 2017. We appreciated the individual performance 645 had to offer and the pedigree that backed it. His sons weaned off well and have performed well at the feedlot.

10 Sons Sell

Connealy Greeley
Connealy Jet 4405
#Queen Ball of Conanga 9316
#Sydgen CC & 7
CCA Annie 253
Diamond Annie 1945

HILLTOP PRAIRIE PRIDE 4677

18882415 • 3/5/2017

CED	BW	WW	MILK	YW	SC	CW	Marb	RE	Fat	\$M	\$W	\$F	\$B
+5	+3.2	+75	+22	+125	+72	+56	+53	+63	+0.21	+51	+71	+83	+130

Our \$16,000 pick from the 2018 Hilltop Angus Ranch sale. This bull kept catching our eye at the feedlot and we really liked what Corey Poser had to say about his dam - a Connealy Black Granite daughter that checks all the boxes for docility, udder quality, depth of body and strong hip.

8 Sons Sell

#Plattemere Weigh Up K360
Prairie Pride Premium 407
LA Polly 827
#Connealy Black Granite
#Hilltop Perfection MP 410
Hilltop Perfection 2155

Lot 1



Lot 1 with dam September 2019



GDAR Primrose Lady 62 - dam of Lot 1

NA PRAIRIE PRIDE 956

DOB: 2/1/2019 • Reg: 19608213 • Tattoo: 956



BW	79
Act WW	753
Adj 205	700
Adj 365	1455
Scrotal	34

Prairie Pride Premium 407
 Hilltop Prairie Pride 4677
 #Hilltop Perfection MP 410
 SandPoint Butkus X797
 GDAR Primrose Lady 62
 #GDAR Primrose Lady 474

%IMF	6.05
%IMF RATIO	131
REA	13.3
REA RATIO	106
RIB FAT	0.22
RUMP FAT	0.25

CED	BW	WW	Milk	YW	SC	Marb	RE	Fat	\$M	\$W	\$F	\$B
10	1	71	17	125	0.32	0.75	0.82	-0.008	42	64	96	160

- HEIFER BULL
- Individual Performance: BR@92, WR@103, YR@113, %IMF@131, REA@106
- Dam's Production: 2WR@99, 2YR@113
- Ranks in the top 10% of the breed for WW, YW and CW, top 15% for RE and top 20% for CED.
- Carcass power here - Excellent ultrasound data with fifth highest %IMF in the sale and big REA!

Herd Bull In The Making!

956 is as stout as they come. He has an impressive spread from birth to yearling and comes from a powerful maternal background.

GDAR Primrose Lady 62 was purchased at the 2016 NILE female sale as the "Pick of the Gartner-Denowh 2016 heifer calves" She has tons of volume and capacity and is the true definition of what an Angus cow should look like. She stands on great feet with good bone and structure and has a great udder. She is on our future donor dam list.

Lot 2



Herd Sire Prospect Here!

9117 is as stout as they come and catches your eye when you walk in the pen. He comes with a balanced EPD profile and above average %IMF.

His dam, NA Miss Lucky 237Z has been a solid producer for us- posting 4WR@107 and 3YR@101.

2 NA PRAIRIE PRIDE 9117

DOB: 2/12/2019 • Reg: 19608194 • Tattoo: 9117



BW	93
Act WW	865
Adj 205	779
Adj 365	1339
Scrotal	37

Prairie Pride Premium 407
 Hilltop Prairie Pride 4677
 #Hilltop Perfection MP 410
 Basin Payweight 072X
 NA Miss Lucky 237Z
 NA Lucky Design 770



%IMF	4.98
%IMF RATIO	118
REA	12.2
REA RATIO	98
RIB FAT	0.38
RUMP FAT	0.39

CED	BW	WW	Milk	YW	SC	Marb	RE	Fat	\$M	\$W	\$F	\$B
3	2.3	65	17	110	0.76	0.92	0.10	0.067	28	56	78	132

- Individual Performance: WR@110, YR@104, %IMF@118 and REA@98
- Dam's Production: 4WR@104, 3YR@101, 2%IMF@123 and 2REA@94
- Top 15% of the breed for Marb EPD, top 20% for WW and top 25@ for YW

3 NA PRAIRIE PRIDE 9129

DOB: 2/17/2019 • Reg: 19608226 • Tattoo: 9129



BW	98
Act WW	780
Adj 205	750
Adj 365	1376
Scrotal	35

Prairie Pride Premium 407
 Hilltop Prairie Pride 4677
 THilltop Perfection MP 410
 McD SF Waylon 4550
 NA Miss Sana 695
 NA Miss Sana 356



%IMF	5.44
%IMF RATIO	119
REA	14.1
REA RATIO	113
RIB FAT	0.20
RUMP FAT	0.38

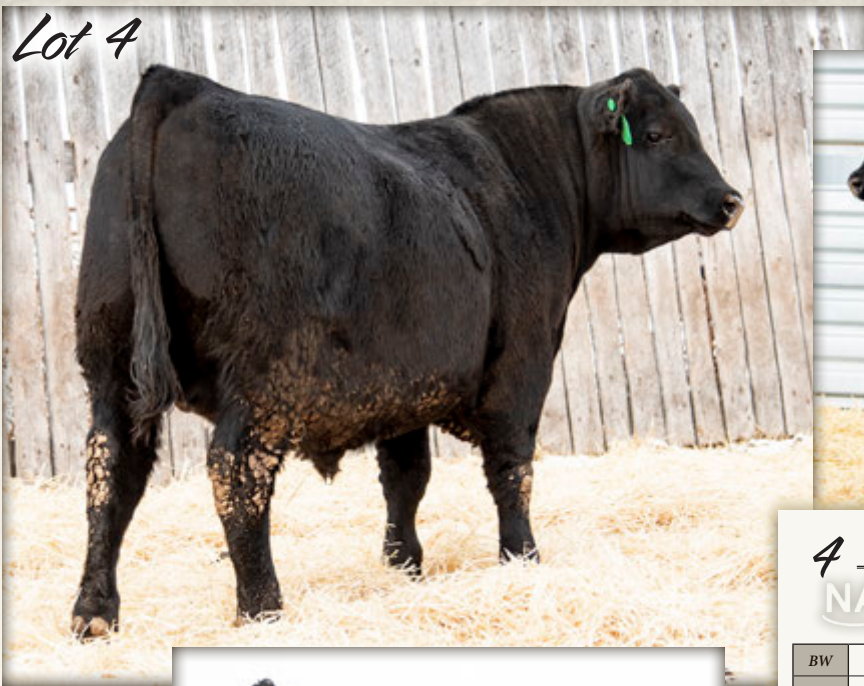
CED	BW	WW	Milk	YW	SC	Marb	RE	Fat	\$M	\$W	\$F	\$B
7	1	63	22	106	0.75	0.65	0.38	0.011	44	64	86	136

- Individual Performance: WR@110, YR@107, %IMF@119 and REA@113
- Dam's Production: 2WR@108, 2YR@110, 2%IMF@122 and 2REA@104
- Top 25% for WW and CW and top 35% for YW and Marb
- Excellent scan data - high %IMF and big REA



Reference Sire - Hilltop Prairie Pride 4677

Lot 4



Lot 4



NA Miss Anna 331A - dam of Lot 4

4 NA FINAL OPTION 922

DOB: 1/24/2019 • Reg: 19608197 • Tattoo: 922



BW	89
Act WW	881
Adj 205	762
Adj 365	1332
Scrotal	36

Carter Final Option 201
Hilltop Final Option 5297
#Hilltop Shoshone 273

KG Rainmaker 9208
NA Miss Anna 331A
NA Miss Sana Anna 4240

%IMF	4.88
%IMF RATIO	114
REA	13.9
REA RATIO	112
RIB FAT	0.30
RUMP FAT	0.30

CED	BW	WW	Milk	YW	SC	Marb	RE	Fat	\$M	\$W	\$F	\$B
1	1	44	26	85	1	0.41	0.56	0.008	54	49	51	94

- Individual Performance: WR@107, YR@103, %IMF@114 and REA@112
- Dam's Production: 4BR@89, 4WR@85, 2YR@103, 2%IMF@87 and 2REA@113
- Ranks in the top 25% of the breed for Fat EPD and top 35% for Scrotal and HP
- 3/4 brother to Lot 6
- Excellent scan data - high %IMF and big REA



Lot 5



Lot 5

5 NA FINAL OPTION 9124

DOB: 2/15/2019 • Reg: 19608187 • Tattoo: 9124



BW	94
Act WW	948
Adj 205	858
Adj 365	1300
Scrotal	41

Carter Final Option 201
Hilltop Final Option 5297
#Hilltop Shoshone 273

KG Wisdom 9366
NA Miss Anna JCN 161Y
NA Miss Lucky Anna JCN 8872

%IMF	3.09
%IMF RATIO	96
REA	14
REA RATIO	100
RIB FAT	0.20
RUMP FAT	0.23

CED	BW	WW	Milk	YW	SC	Marb	RE	Fat	\$M	\$W	\$F	\$B
9	0.6	51	35	101	1.92	0.17	0.54	0.009	61	66	84	114

- Individual Performance: WR@119, YR@107, %IMF@96 and REA@100
- Donor Dam's Production: 4WR@108, 3YR@109, 3%IMF@98 and 3REA@105
- Top 3% of the breed for Scrotal, top 4% for Milk and top 30% for CED
- This guy has been a stud from day one - crushed the scale at 948 lbs at weaning, our highest weaning weight this year.
- Ultrasound scanned a big REA



Lot 5 - August 2019

Lot 6



6 NA FINAL OPTION 9101

DOB: 2/9/2019 • Reg: 19617268 • Tattoo: 9101



BW	96
Act WW	851
Adj 205	776
Adj 365	1461
Scrotal	36.5

Hilltop Final Option 5297
 NA Final Option 711E
 NA Everelda Entense 450B
 KG Rainmaker 9208
 NA Whitney 409B
 NA Miss Whitney 140Y

%IMF	4.65
%IMF RATIO	110
REA	12.7
REA RATIO	102
RIB FAT	0.25
RUMP FAT	0.27

CED	BW	WW	Milk	YW	SC	Marb	RE	Fat	\$M	\$W	\$F	\$B
2	2.9	52	27	100	0.62	0.35	0.28	0.006	45	48	85	120

- Individual Performance: WR@109, YR@113, %IMF@110 and REA@102
- Dam's Production: 3WR@95, 1YR@113, 1%IMF@110 and 1REA@102
- Ranks in the top 25% of the breed for CW and top 35% for HP and Milk
- 3/4 brother to Lot 4

7 NA FINAL OPTION 9107

DOB: 2/10/2019 • Reg: 19608221 • Tattoo: 9107



BW	90
Act WW	784
Adj 205	742
Adj 365	1376
Scrotal	35.5

Carter Final Option 201
 Hilltop Final Option 5297
 #Hilltop Shoshone 273
 S A V Recharge 3436
 NA Miss Cinda 652
 NA Miss Cinda 1123

%IMF	5.01
%IMF RATIO	109
REA	11.4
REA RATIO	91
RIB FAT	0.21
RUMP FAT	0.23

CED	BW	WW	Milk	YW	SC	Marb	RE	Fat	\$M	\$W	\$F	\$B
8	-0.1	72	24	127	0.82	0.45	0.67	-0.023	57	77	94	143

- Individual Performance: WR@109, YR@107, %IMF@109 and REA@91
- Dam's Production: 2WR@105, 1YR@107, 1%IMF@109 and 1REA@91
- Top 10% of the breed for WW, YW and CW, top 15% for Fat and top 25% for BW
- 3/4 brother to Lots 35 and 62
- Balanced EPD profile



Lot 7



Reference Sire - Hilltop Final Option 5297



Lot 8

8 NA HOMESTEAD 920

DOB: 1/23/2019 • Reg: 19610091 • Tattoo: 920



BW	83
Act WW	875
Adj 205	824
Adj 365	1384
Scrotal	32

#CTS Remedy 1T01
Ellingson Homestead 6030
EA Erica 1082
S A V Ten Speed 3022
NA Miss Anna 726
NA Miss Anna 331A

%IMF	5.69
%IMF RATIO	122
REA	11.3
REA RATIO	90
RIB FAT	0.14
RUMP FAT	0.21

CED	BW	WW	Milk	YW	SC	Marb	RE	Fat	\$M	\$W	\$F	\$B
-1	2.6	80	25	146	1.04	0.79	0.63	0.015	43	74	120	180

- Individual Performance: WR@121, YR@107, %IMF@122 and REA@90
- Out of a first calf heifer
- Top 1% for YW, top 2% for WW and CW, top 20% for HP and Marb EPD
- 3/4 brother to Lots 9 and 10
- High %IMF



Lot 9

9 NA HOMESTEAD 936

DOB: 1/28/2019 • Reg: 19610097 • Tattoo: 936



BW	87
Act WW	755
Adj 205	729
Adj 365	1435
Scrotal	36

#CTS Remedy 1T01
Ellingson Homestead 6030
EA Erica 1082
S A V Ten Speed 3022
NA Miss Diana 768
CAR Miss Diana 792

%IMF	4.12
%IMF RATIO	89
REA	13.3
REA RATIO	106
RIB FAT	0.28
RUMP FAT	0.23

CED	BW	WW	Milk	YW	SC	Marb	RE	Fat	\$M	\$W	\$F	\$B
-1	2.7	60	23	119	1.42	0.2	0.71	0.009	47	52	96	129

- Individual Performance: WR@107, YR@111, %IMF@89 and REA@106
- Out of a first calf heifer
- Top 15% for YW and Scrotal, top 25% for RE EPD and top 35% for WW and HP
- 3/4 brother to Lots 8 and 10
- Big REA

10 NA HOMESTEAD 916

DOB: 1/22/2019 • Reg: 19610104 • Tattoo: 916



BW	91
Act WW	755
Adj 205	722
Adj 365	1375
Scrotal	35.5

#CTS Remedy 1T01
Ellingson Homestead 6030
EA Erica 1082
S A V Ten Speed 3022
NA Elsiemere 722
#NA Elsiemere 533

%IMF	3.13
%IMF RATIO	66
REA	12.8
REA RATIO	102
RIB FAT	0.18
RUMP FAT	0.18

CED	BW	WW	Milk	YW	SC	Marb	RE	Fat	\$M	\$W	\$F	\$B
2	2.4	75	21	140	1.29	0.38	0.85	0.007	65	68	103	147

- Individual Performance: WR@106, YR@107, %IMF@66 and REA@102
- Out of a first calf heifer
- Ranks in the top 2% of the breed for YW, top 4% for WW, top 15% for Doc, HP and CW and top 20% for Scrotal
- 3/4 brother to Lots 8 and 9

11 NA HOMESTEAD 918

DOB: 1/23/2019 • Reg: 19610096 • Tattoo: 918



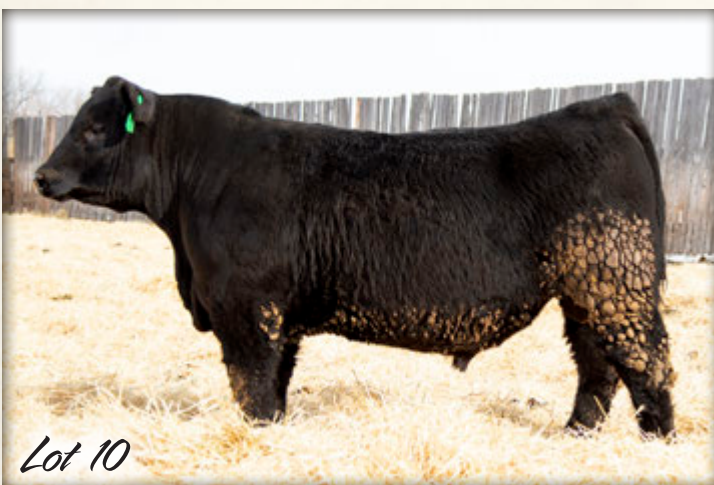
BW	75
Act WW	747
Adj 205	714
Adj 365	1316
Scrotal	35.5

#CTS Remedy 1T01
Ellingson Homestead 6030
EA Erica 1082
TLC Copywright 358
NA Enchantress 786
Diamond Enchantress U220

%IMF	4.86
%IMF RATIO	104
REA	11.6
REA RATIO	93
RIB FAT	0.26
RUMP FAT	0.34

CED	BW	WW	Milk	YW	SC	Marb	RE	Fat	\$M	\$W	\$F	\$B
10	-0.8	58	25	120	1.27	0.45	0.24	0.039	54	56	104	140

- HEIFER BULL
- Individual Performance: BR@93, WR@105, YR@102, %IMF@104 and REA@93
- Out of a first calf heifer
- Top 10% of the breed for HP EPD, top 15% for BW and YW and top 20% for CED, and Scrotal



Lot 10



Lot 11

12 NA HOMESTEAD 910

DOB: 1/22/2019 • Reg: 19610090 • Tattoo: 910



BW	78
Act WW	735
Adj 205	703
Adj 365	1332
Scrotal	33

#CTS Remedy 1T01
 Ellingson Homestead 6030
 EA Erica 1082
 Hilltop Final Option 5350
 NA Empress 777
 NA Miss Play On 110Y

%IMF	5.22
%IMF RATIO	112
REA	10.3
REA RATIO	82
RIB FAT	0.34
RUMP FAT	0.32

CED	BW	WW	Milk	YW	SC	Marb	RE	Fat	\$M	\$W	\$F	\$B
6	0.5	68	30	121	0.23	0.54	0.39	0.058	54	78	78	118

- HEIFER BULL
- Individual Performance: BR@97, WR@103, YR@103, %IMF@112 and REA@82
- Out of a first calf heifer
- Top 15% for WW, YW and Milk, top 30% for CW and top 35% for BW
- High %IMF



13 NA HOMESTEAD 928

DOB: 1/25/2019 • Reg: 19610105 • Tattoo: 928



BW	90
Act WW	840
Adj 205	798
Adj 365	1328
Scrotal	34.5

#CTS Remedy 1T01
 Ellingson Homestead 6030
 EA Erica 1082
 S Chisum 255
 NA Everelda Entense 701
 NA Everelda Entense 549

%IMF	3.41
%IMF RATIO	73
REA	15.9
REA RATIO	127
RIB FAT	0.17
RUMP FAT	0.21

CED	BW	WW	Milk	YW	SC	Marb	RE	Fat	\$M	\$W	\$F	\$B
4	1.3	77	29	132	0.71	0.22	1.04	0.01	69	86	102	141

- Individual Performance: WR@117, YR@103, %IMF@73 and REA@127
- Out of a first calf heifer
- Ranks in the top 3% for WW, top 4% for YW and REA, top10% for CW and top 20% for Doc and Milk
- 3/4 brother to Lot 14
- Largest REA bull in the sale



14 NA HOMESTEAD 915

DOB: 1/22/2019 • Reg: 19610101 • Tattoo: 915



BW	90
Act WW	780
Adj 205	743
Adj 365	1327
Scrotal	37

#CTS Remedy 1T01
 Ellingson Homestead 6030
 EA Erica 1082
 S Chisum 255
 NA Eileen Lass 730
 NA Eileen Lass 406

%IMF	3.68
%IMF RATIO	78
REA	12.8
REA RATIO	102
RIB FAT	0.16
RUMP FAT	0.14

CED	BW	WW	Milk	YW	SC	Marb	RE	Fat	\$M	\$W	\$F	\$B
3	4.1	78	20	139	0.92	-0.16	0.48	0.019	89	68	131	143

- Individual Performance: WR@109, YR@103,%IMF@78 and REA@102
- Out of a first calf heifer
- Top 2% for YW, top 3% for WW and CW, top 10% for HP and top 15% for Doc
- 3/4 brother to Lot 13



15 NA FOUNDATION 938

DOB: 1/29/2019 • Reg: 19610026 • Tattoo: 938



BW	93
Act WW	877
Adj 205	766
Adj 365	1329
Scrotal	37

#Vision Unanimous 1418
 S Foundation 514
 #S Lady Ann 8384
 #TC Aberdeen 759
 NA Miss QV Time 234
 NA Miss QV Time 215

%IMF	4.01
%IMF RATIO	94
REA	12.9
REA RATIO	104
RIB FAT	0.23
RUMP FAT	0.30

CED	BW	WW	Milk	YW	SC	Marb	RE	Fat	\$M	\$W	\$F	\$B
-4	2.1	56	27	100	0.82	0.48	0.35	0.043	50	57	79	118

- Individual Performance: WR@108, YR@103,%IMF@94 and REA@104
- Dam's Production: 6WR@98, 3YR@101, 4%IMF@80 and 4REA@101
- Top 1% of the breed for Doc and top 35% for Milk





Lot 16

16 NA FOUNDATION 9118

DOB: 2/12/2019 • Reg: 19610004 • Tattoo: 9118

#Vision Unanimous 1418
S Foundation 514
#S Lady Ann 8384

#Sitz JLS Game Day 9630
NA Queen 414
Vermilion Queen 2296

BW	90
Act WW	855
Adj 205	769
Adj 365	1267
Scrotal	36.5

%IMF	4.52
%IMF RATIO	108
REA	12.3
REA RATIO	99
RIB FAT	0.29
RUMP FAT	0.27

CED	BW	WW	Milk	YW	SC	Marb	RE	Fat	\$M	\$W	\$F	\$B
4	2.8	58	18	101	0.61	0.82	0.1	0.083	73	53	70	118

- Individual Performance: WR@108, YR@98, %IMF@108 and REA@99
- Dam's Production: 4BR@91, 4WR@101, 4YR@99, 4%IMF@119 and 4REA@95
- Top 20% of the breed for Marb, top 35% for Doc
- 3/4 brother to Lot 47

17 NA FOUNDATION 988

DOB: 2/6/2019 • Reg: 19610042 • Tattoo: 988

#Vision Unanimous 1418
S Foundation 514
#S Lady Ann 8384

KG Onward 6345
NA Miss Samantha JCN 9930
NA Miss Samantha 139 of JN

BW	101
Act WW	855
Adj 205	761
Adj 365	1358
Scrotal	37

%IMF	2.8
%IMF RATIO	66
REA	12.9
REA RATIO	104
RIB FAT	0.26
RUMP FAT	0.25

CED	BW	WW	Milk	YW	SC	Marb	RE	Fat	\$M	\$W	\$F	\$B
1	3.1	61	22	106	1.5	0.44	0.57	0.007	58	56	100	143

- Individual Performance: WR@107, YR@105, %IMF@66 and REA@104
- Dam's Production: 7WR@104, 5YR@108, 5%IMF@77 and 5REA@101
- Top 15% for Scrotal and CW, top 30% for WW and top 35% for YW and Doc



NA Miss Samantha JCN 9930 - dam of Lot 17

18 NA FOUNDATION 999

DOB: 2/8/2019 • Reg: 19610037 • Tattoo: 999

#Vision Unanimous 1418
S Foundation 514
#S Lady Ann 8384

Ox Bow Final Answer 8274
Vermilion Blackbird 2616
Vermilion Blackbird 9008

BW	92
Act WW	830
Adj 205	741
Adj 365	1359
Scrotal	38

%IMF	3.64
%IMF RATIO	86
REA	12.8
REA RATIO	103
RIB FAT	0.27
RUMP FAT	0.34

CED	BW	WW	Milk	YW	SC	Marb	RE	Fat	\$M	\$W	\$F	\$B
5	2.1	67	13	119	1.21	0.24	0.19	0.042	50	53	96	121

- Individual Performance: WR@104, YR@105, %IMF@86 and REA@103
- Dam's Production: 4WR@103, 2YR@100, 3%IMF@103 and 3REA@101
- Ranks in the top 15% of the breed for WW and YW, top 20% for Doc and top 25% for Scrotal



Lot 18

19 NA FOUNDATION 9112

DOB: 2/11/2019 • Reg: 19610010 • Tattoo: 9112

#Vision Unanimous 1418
S Foundation 514
#S Lady Ann 8384

#GDAR CJD Alliance 0714
NA Miss Cinda 460
NA Miss Cinda 1123

BW	99
Act WW	816
Adj 205	734
Adj 365	1225
Scrotal	36

%IMF	3.89
%IMF RATIO	92
REA	12.3
REA RATIO	99
RIB FAT	0.19
RUMP FAT	0.20

CED	BW	WW	Milk	YW	SC	Marb	RE	Fat	\$M	\$W	\$F	\$B
8	0.3	56	31	110	1.32	0.43	0.50	0.01	50	65	99	140

- Individual Performance: WR@103, YR@95, %IMF@92 and REA@99
- Dam's Production: 3WR@108, 2YR@100, 3%IMF@103 and 3REA@101
- Top 15% for Doc and Milk, top 20% for Scrotal, top 25% for YW top 30% for BW and top 35% for CED
- 3/4 brother to Lots 20 and 78





20 NA FOUNDATION 984

DOB: 2/6/2019 • Reg: 19610015 • Tattoo: 984



BW	95
Act WW	777
Adj 205	692
Adj 365	1338
Scrotal	39

#Vision Unanimous 1418
S Foundation 514
#S Lady Ann 8384
#GDAR CJD Alliance 0714
#NA Susie 3114
Corey A Susie 9977



%IMF	4.85
%IMF RATIO	115
REA	12.1
REA RATIO	98
RIB FAT	0.29
RUMP FAT	0.29

CED	BW	WW	Milk	YW	SC	Marb	RE	Fat	\$M	\$W	\$F	\$B
9	-0.3	45	24	90	1.21	0.7	0.12	0.038	71	49	80	126

- Individual Performance: WR@97, YR@103, %IMF@115 and REA@98
- Pathfinder Dam's Production: 5WR@108, 3YR@105, 3%IMF@111 and 3REA@103
- Top 4% for Doc, top 20% for BW, top 25% for Scrotal, top 30% for CED and Marb
- 3/4 brother to Lots 19 and 78

21 NA FOUNDATION 985

DOB: 2/6/2019 • Reg: 19610041 • Tattoo: 985



BW	92
Act WW	826
Adj 205	734
Adj 365	1222
Scrotal	37.5

#Vision Unanimous 1418
S Foundation 514
#S Lady Ann 8384
#Connealy Thunder
NA Miss Anna JCN 0012
NA Miss Lucky Anna JCN 8872



%IMF	4.39
%IMF RATIO	104
REA	11.1
REA RATIO	90
RIB FAT	0.22
RUMP FAT	0.23

CED	BW	WW	Milk	YW	SC	Marb	RE	Fat	\$M	\$W	\$F	\$B
8	1.2	48	24	88	1.58	0.66	0.02	0.006	54	50	64	110

- Individual Performance: WR@103, YR@94, %IMF@104 and REA@90
- Dam's Production 7WR@101, 6YR@101, 7%IMF@92, 7REA@99
- Top 10% for Scrotal, top 35% for CED and Marb

22 NA REGISTRY 9204

DOB: 3/28/2019 • Reg: 19608199 • Tattoo: 9204



BW	88
Act WW	808
Adj 205	830
Adj 365	1462
Scrotal	35

#S A V Registry 2831
NA Registry 521
H A R B Ebony Erica 912
#GDAR CJD Alliance 0714
#NA Lady Kelton 410
NA Image of a Lady 2145



%IMF	4.39
%IMF RATIO	NA
REA	13.7
REA RATIO	NA
RIB FAT	0.23
RUMP FAT	0.23

CED	BW	WW	Milk	YW	SC	Marb	RE	Fat	\$M	\$W	\$F	\$B
5	1.8	70	28	130	1.18	0.89	0.47	0.029	52	73	119	180

- Individual Performance: WR@117 and YR@100
- This bull just missed the minimum age requirement when he was ultrasounded, so he could not be ratioed with the group, but his actual scan data is recorded
- Dam's Production: 4WR@110, 2YR@106, 1%IMF@133 and 1REA@106
- Top 2% for CW, top 4% for Doc, top 5% for YW, top 10% for WW top 15% for Marb and top 25% for Scrotal and Milk



9204 is the youngest bull in the sale. A March 28th calf that dodged all the cold weather of last winter and flat out performed. His dam, NA Lady Kelton 410 bred back early and calved on February 21st this year, earning her a spot on our prospect donor list.

Lot 23



23 NA REGISTRY CA 9157

DOB: 3/1/2019 • Reg: 19612722 • Tattoo: 4G



NA

BW	99
Act WW	859
Adj 205	823
Adj 365	1474
Scrotal	35

#S A V Registry 2831
 NA Registry 521
 H A R B Ebony Erica 912
 Sitz Onward 9007
 CoreyA Everelda Entense 429B
 #CoreyA Everelda Entense 7727

%IMF	3.31
%IMF RATIO	80
REA	13.9
REA RATIO	112
RIB FAT	0.19
RUMP FAT	0.20

CED	BW	WW	Milk	YW	SC	Marb	RE	Fat	\$M	\$W	\$F	\$B
6	1.7	60	32	108	0.25	0.52	0.64	0.005	43	70	102	150

- Individual Performance: WR@116, YR@114, %IMF@80 and REA@112
- Dam's Production: 4WR@105, 2YR@113, 1%IMF@80 and 1REA@112
- Top 4% for CW, top 10% for Milk, Top 30% for YW and top 35% for WW and RE
- 3/4 brother to Lots 24, 25, 54, 55 and 56
- Big REA bull

24 NA REGISTRY 9158

DOB: 3/1/2019 • Reg: 19608188 • Tattoo: 9158



NA

BW	96
Act WW	785
Adj 205	739
Adj 365	1318
Scrotal	34

#S A V Registry 2831
 NA Registry 521
 H A R B Ebony Erica 912
 Sitz Onward 9007
 #NA Miss Anna 211Z
 NA Miss Frontier Anna 5533



%IMF	4.6
%IMF RATIO	111
REA	12.3
REA RATIO	99
RIB FAT	0.18
RUMP FAT	0.18

CED	BW	WW	Milk	YW	SC	Marb	RE	Fat	\$M	\$W	\$F	\$B
6	1.5	59	22	100	0.15	0.61	0.56	-0.016	46	58	70	124

- Individual Performance: WR@104, YR@102, %IMF@111 and REA@99
- Dam's Production: 5WR@105, 1YR@102, 1%IMF@102 and 1REA@99
- Ranks in the top 20% of the breed for Fat, top 35% for WW and top 40% for Marb
- 3/4 brother to Lots 23, 25, 54, 55 and 56

25 NA REGISTRY 9130

DOB: 2/18/2019 • Reg: 19608201 • Tattoo: 9130



NA

BW	93
Act WW	789
Adj 205	736
Adj 365	1235
Scrotal	36.5

#S A V Registry 2831
 NA Registry 521
 H A R B Ebony Erica 912
 Sitz Onward 9007
 NA Satin Doll 417B
 NA Miss Anna JN 615S

%IMF	4.52
%IMF RATIO	108
REA	12.7
REA RATIO	102
RIB FAT	0.18
RUMP FAT	0.27

CED	BW	WW	Milk	YW	SC	Marb	RE	Fat	\$M	\$W	\$F	\$B
2	0.9	45	29	84	0.8	0.51	0.56	0.032	44	49	102	146

- Individual Performance: WR@104, YR@96, %IMF@108 and REA@102
- Dam's Production: 3WR@104, 1YR@96, 1%IMF@108 and 1REA@102
- Top 20% of the breed for HP and Milk, top 30% for CW and top 40% for BW
- 3/4 brother to Lots 23, 24, 54, 55 and 56



Lot 24



26 NA JET 9170
 DOB: 3/6/2019 • Reg: 19608184 • Tattoo: 9170

BW	102
Act WW	867
Adj 205	827
Adj 365	1384
Scrotal	36

Connealy Jet 4405
 Clear Creek Jet 645
 #Cca Annie 253

Sitz Onward 9007
 NA Miss Cinda 1123
 #NA Miss Cinda 4114 YR

%IMF	3.62
%IMF RATIO	88
REA	14.4
REA RATIO	116
RIB FAT	0.17
RUMP FAT	0.22

CED	BW	WW	Milk	YW	SC	Marb	RE	Fat	\$M	\$W	\$F	\$B
9	0.9	62	33	106	0.16	0.38	0.79	0.00	52	76	81	125

- Individual Performance: WR@116, YR@107, %IMF@88 and REA@116
- Dam's Production: 7WR@105, 5YR@105, 7%IMF@85 and 7REA@99
- Top 10% for Milk EPD, top 20% for HP and RE, top 25% for WW and CW top 30% for CED and top 35% for YW and Fat
- 3/4 brother to Lots 27, 51 and 52
- Big REA

27 NA JET 9193
 DOB: 3/22/2019 • Reg: 19608186 • Tattoo: 9193

BW	99
Act WW	820
Adj 205	824
Adj 365	1366
Scrotal	35

Connealy Jet 4405
 Clear Creek Jet 645
 #Cca Annie 253

Sitz Onward 9007
 NA Miss Blackcap 139
 KG Blackcap 6394

%IMF	3.21
%IMF RATIO	104
REA	14
REA RATIO	100
RIB FAT	0.21
RUMP FAT	0.32

CED	BW	WW	Milk	YW	SC	Marb	RE	Fat	\$M	\$W	\$F	\$B
7	1	48	31	89	0.29	0.33	0.36	0.053	46	56	69	100

- Individual Performance: WR@114, YR@112, %IMF@104 and REA@100
- Dam's Production: 7BR@99, 7WR@101, 3YR@102, 5%IMF@94 and 5REA@99
- Top 15% for Milk, top 35% for HP and top 45% for CED and BW
- 3/4 brother to Lots 26, 51 and 52
- March 22 calf that performed well.
- Big REA



28 NA JET 9192
 DOB: 3/21/2019 • Reg: 19608228 • Tattoo: 9192

BW	89
Act WW	789
Adj 205	812
Adj 365	1436
Scrotal	34

Connealy Jet 4405
 Clear Creek Jet 645
 #Cca Annie 253

KG Onward 6345
 NA Miss Onward Design 950
 NA Miss Design 311-654

%IMF	3.73
%IMF RATIO	92
REA	13.7
REA RATIO	110
RIB FAT	0.20
RUMP FAT	0.29

CED	BW	WW	Milk	YW	SC	Marb	RE	Fat	\$M	\$W	\$F	\$B
13	0.0	60	27	108	0.06	0.48	0.71	0.02	59	67	94	139

- Suitable for use on larger heifers
- Individual Performance: WR@114, YR@111, %IMF@92 and REA@110
- Dam's Production: 9BR@96, 9WR@103, 7YR@102, 7%IMF@110 and 7REA@100
- Ranks in the top 10% for CED and HP, top 15% for CW, top 25% for BW and RE top 30% for YW and top 35% for WW and Milk

29 NA JET 9149
 DOB: 2/27/2019 • Reg: 19608195 • Tattoo: 9149

BW	82
Act WW	761
Adj 205	711
Adj 365	1357
Scrotal	35

Connealy Jet 4405
 Clear Creek Jet 645
 #Cca Annie 253

#Hoover Dam
 NA Miss Image JCN 315
 NA Miss Image JCN 0008

%IMF	4.31
%IMF RATIO	104
REA	12.6
REA RATIO	102
RIB FAT	0.22
RUMP FAT	0.25

CED	BW	WW	Milk	YW	SC	Marb	RE	Fat	\$M	\$W	\$F	\$B
13	-0.8	61	31	112	0.87	0.49	0.82	0.002	47	69	80	129

- HEIFER BULL
- Individual Performance: BR@92, WR@100, YR@105, %IMF@104 and REA@102
- Dam's Production: 4BR@97, 4WR@101, 4YR@101, 4%IMF@104 and 4REA@98
- Top 4% of the breed for HP, top 10% for CED, top 15% for BW, Milk and RE, top 25% for YW and top 30% for WW and CW



30 NA FINAL OPTION 986
 DOB: 2/6/2019 • Reg: 19608191 • Tattoo: 986

BW	91
Act WW	832
Adj 205	770
Adj 365	1388
Scrotal	34.5

Carter Final Option 201
 Hilltop Final Option 5297
 #Hilltop Shoshone 273

#GDAR CJD Alliance 0714
 NA Lovemere 526C
 NA Miss Queen JCN 017

%IMF	4.25
%IMF RATIO	92
REA	13.6
REA RATIO	109
RIB FAT	0.33
RUMP FAT	0.36

CED	BW	WW	Milk	YW	SC	Marb	RE	Fat	\$M	\$W	\$F	\$B
12	0.2	60	38	106	0.52	0.65	0.63	0.064	61	82	74	123

- Individual Performance: WR@113, YR@108, %IMF@92 and REA@109
- Dam's Production: 2WR@117, 2YR@114, 2%IMF@99, 2REA@111
- Top 2% for Milk, top 10% for CED, top 20% for Doc, top 30% for BW and top 35% for WW, YW and Marb
- 3/4 brother to Lots 31 and 33
- Big REA

31 NA FINAL OPTION 9162

DOB: 3/4/2019 • Reg: 19608190 • Tattoo: 9162



BW	93
Act WW	766
Adj 205	758
Adj 365	1358
Scrotal	35

Carter Final Option 201
Hilltop Final Option 5297
#Hilltop Shoshone 273
#GDAR CJD Alliance 0714
NA Bridget 513C
NA Miss Bridget 9902

%IMF	3.6
%IMF RATIO	80
REA	14.7
REA RATIO	118
RIB FAT	0.34
RUMP FAT	0.43

CED	BW	WW	Milk	YW	SC	Marb	RE	Fat	\$M	\$W	\$F	\$B
9	0.3	64	37	113	0.81	0.39	0.49	0.035	58	83	79	116

- Individual Performance: WR@111, YR@105, %IMF@80 and REA@118
- Dam's Production: 2WR@108, 1YR@105, 1%IMF@80 and 1REA@118
- Ranks in the top 2% for Milk, top 20% for WW and YW, top 25% for CW, top 30% for CED and BW and top 40% for Doc
- 3/4 brother to Lots 30 and 33
- Big REA

33 NA FINAL OPTION 954

DOB: 2/1/2019 • Reg: 19608208 • Tattoo: 954



BW	78
Act WW	743
Adj 205	683
Adj 365	1288
Scrotal	41

Carter Final Option 201
Hilltop Final Option 5297
#Hilltop Shoshone 273
#GDAR CJD Alliance 0714
NA Lady 504C
NA Miss Image Time 718

%IMF	3.97
%IMF RATIO	85
REA	13.2
REA RATIO	106
RIB FAT	0.24
RUMP FAT	0.29

CED	BW	WW	Milk	YW	SC	Marb	RE	Fat	\$M	\$W	\$F	\$B
9	-1.6	49	33	92	1.74	0.32	0.56	-0.019	61	66	68	108

- **HEIFER BULL**
- Individual Performance: WR@100, YR@100, %IMF@85 and REA@106
- Dam's Production: 2BR@96, 2 WR@100, 1YR@100, %IMF@85 and 1REA@106
- Top 5% of the breed for BW and Scrotal, top 10% for Milk, top 15% for Fat and top 30% for CED
- 3/4 brother to Lots 30 and 31
- Big REA



Lot 35

35 NA FINAL OPTION 961

DOB: 2/3/2019 • Reg: 19608211 • Tattoo: 961



BW	85
Act WW	699
Adj 205	657
Adj 365	1371
Scrotal	35

Carter Final Option 201
Hilltop Final Option 5297
#Hilltop Shoshone 273
S A V Recharge 3436
NA Miss Anna 611
NA Miss Anna JCN 0012

%IMF	4.95
%IMF RATIO	107
REA	11.1
REA RATIO	89
RIB FAT	0.28
RUMP FAT	0.34

CED	BW	WW	Milk	YW	SC	Marb	RE	Fat	\$M	\$W	\$F	\$B
2	2.1	69	23	123	1.02	0.16	0.36	0.012	66	71	65	91

- Individual Performance: WR@96, YR@106, %IMF@107 and REA@89
- Dam's Production: 2WR@98, 2YR@105, 2%IMF@101 and 2REA@91
- Top 10% for YW, top 15% for WW, top 20% for Doc and top 35% for Scrotal
- 3/4 brother to Lots 7 and 62

32 NA FINAL OPTION 982

DOB: 2/6/2019 • Reg: 19608224 • Tattoo: 982



BW	70
Act WW	739
Adj 205	694
Adj 365	1262
Scrotal	36

Carter Final Option 201
Hilltop Final Option 5297
#Hilltop Shoshone 273
McD SF Waylon 4550
NA Miss Joy 680
NA Miss Joy 135

%IMF	3.63
%IMF RATIO	79
REA	13.5
REA RATIO	108
RIB FAT	0.17
RUMP FAT	0.21

CED	BW	WW	Milk	YW	SC	Marb	RE	Fat	\$M	\$W	\$F	\$B
16	-2.7	69	29	116	1.22	0.2	0.7	-0.024	65	88	94	131

- **HEIFER BULL**
- Individual performance: WR@102, YR@98, %IMF@79 and REA@108
- Dam's Production: 2BR@95, 2WR@96, 1YR@98, 1%IMF@79 and 1REA@108
- Top 1% for CED, top 2% for BW, top 15% for WW and Fat
- 3/4 brother to Lots 60, 68 and 69
- Big REA

34 NA FINAL OPTION 964

DOB: 2/3/2019 • Reg: 19608223 • Tattoo: 964



BW	74
Act WW	711
Adj 205	666
Adj 365	1322
Scrotal	35.5

Carter Final Option 201
Hilltop Final Option 5297
#Hilltop Shoshone 273
#Coleman Charlo 0256
NA Erica 665
#Corey A Erica 24J 558

%IMF	6.1
%IMF RATIO	132
REA	12.8
REA RATIO	102
RIB FAT	0.25
RUMP FAT	0.25

CED	BW	WW	Milk	YW	SC	Marb	RE	Fat	\$M	\$W	\$F	\$B
12	-1.4	64	28	114	1.74	0.62	0.58	0.004	59	76	70	123

- **HEIFER BULL**
- Individual Performance: BR@87, WR@98, YR@103, %IMF@132 and REA@102
- Dam's Production: 2BR@87, 1WR@98, 1YR@103, 1%IMF@132 and 1REA@102
- Ranks in the top 5% for Scrotal, top 10% for CED and BW, top 20% for WW and YW, top 25% for Milk and top 30% for HP EPD
- Third highest %IMF in the sale



Lot 36

36 NA HOMESTEAD 912

DOB: 1/22/2019 • Reg: 19610098 • Tattoo: 912



BW	88
Act WW	766
Adj 205	731
Adj 365	1430
Scrotal	40

#CTS Remedy 1T01
Ellingson Homestead 6030
EA Erica 1082
#S A V Registry 2831
NA Georgina 739
NA Miss Georgina 242

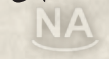
%IMF	3.91
%IMF RATIO	83
REA	13.8
REA RATIO	110
RIB FAT	0.22
RUMP FAT	0.25

CED	BW	WW	Milk	YW	SC	Marb	RE	Fat	\$M	\$W	\$F	\$B
6	0.6	60	32	115	1.54	0.07	0.83	0.018	51	66	105	133

- Individual Performance: WR@107, YR@111, %IMF@83 and REA@110
- Out of a first calf heifer
- Ranks in the top 10% for Scrotal, Doc, Milk and CW, top 15% for RE, top 20% for YW and top 35% for BW and WW
- 3/4 brother to Lots 37, 41 and 76
- Big REA

37 NA HOMESTEAD 908

DOB: 1/20/2019 • Reg: 19610094 • Tattoo: 908



%IMF	6.22
%IMF RATIO	133
REA	11.6
REA RATIO	93
RIB FAT	0.35
RUMP FAT	0.32

BW	93
Act WW	747
Adj 205	714
Adj 365	1303
Scrotal	34

#CTS Remedy 1T01
 Ellingson Homestead 6030
 EA Erica 1082
 NA Registry 521
 NA Miss Queen 7107
 NA Miss Queen JCN 378

CED	BW	WW	Milk	YW	SC	Marb	RE	Fat	\$M	\$W	\$F	\$B
4	2.7	73	31	128	0.2	0.82	0.38	0.096	69	79	81	132

- Individual Performance: WR@105, YR@101, %IMF@133 and REA@93
- Out of a first calf heifer
- Top 10% for WW and YW, top 15% for HP, Milk and CW, and top 20% for Doc and Marb
- 3/4 brother to Lots 36, 41 and 76
- Second highest %IMF in the sale



Lot 37

38 NA HOMESTEAD 977

DOB: 2/5/2019 • Reg: 19610175 • Tattoo: 977



%IMF	4.79
%IMF RATIO	113
REA	12.3
REA RATIO	99
RIB FAT	0.35
RUMP FAT	0.43

BW	79
Act WW	755
Adj 205	691
Adj 365	1310
Scrotal	33.5

#CTS Remedy 1T01
 Ellingson Homestead 6030
 EA Erica 1082
 #S A V Final Answer 0035
 H A R B Ebony Erica 912
 H A R B Ebony Erica 413

CED	BW	WW	Milk	YW	SC	Marb	RE	Fat	\$M	\$W	\$F	\$B
9	-1.8	49	31	88	-0.13	0.65	0.14	0.078	79	65	45	86

- HEIFER BULL
- Individual Performance: BR@90, WR@97, YR@101 %IMF@113 and REA@99
- Dam's Production: 8BR@93, 8WR@102, 6YR@104, 7%IMF@106 and 7REA@97
- Ranks in the top 4% of the breed for BW, top 10%for HP, top 15% for Milk, top 30% for CED and top 35% for Marb
- High %IMF

39 NA HOMESTEAD 945

DOB: 1/30/2019 • Reg: 19610127 • Tattoo: 945



%IMF	3.58
%IMF RATIO	84
REA	13.2
REA RATIO	106
RIB FAT	0.18
RUMP FAT	0.20

BW	81
Act WW	783
Adj 205	685
Adj 365	1288
Scrotal	35

#CTS Remedy 1T01
 Ellingson Homestead 6030
 EA Erica 1082
 Sitz Onward 9007
 NA Miss Anna 365A
 NA Miss Image Maker JN 5501

CED	BW	WW	Milk	YW	SC	Marb	RE	Fat	\$M	\$W	\$F	\$B
9	0.6	60	19	101	0.21	0.09	0.49	0.009	70	58	71	96

- HEIFER BULL
- Individual Performance: BR@91, WR@96, YR@99, %IMF@84 and REA@106
- Dam's Production: 3BR@94, 3WR@98, 3YR@97, 5%IMF@98, 5REA@101
- Ranks in the top 1% of the breed for CEM, top 10% for HP, top 30%for CED and top 35% for BW and WW
- Big REA

40 NA HOMESTEAD 913

DOB: 1/22/2019 • Reg: 19610089 • Tattoo: 913



%IMF	4.79
%IMF RATIO	102
REA	11.5
REA RATIO	92
RIB FAT	0.25
RUMP FAT	0.34

BW	86
Act WW	713
Adj 205	685
Adj 365	1306
Scrotal	36.5

#CTS Remedy 1T01
 Ellingson Homestead 6030
 EA Erica 1082
 NA Alliance JCN 204Z
 NA Queen 621D
 NA Miss Queen JCN 017

CED	BW	WW	Milk	YW	SC	Marb	RE	Fat	\$M	\$W	\$F	\$B
5	1	60	25	110	0.72	0.5	0.31	0.055	58	63	69	107

- Suitable for use on larger heifers
- Individual Performance: WR@101, YR@102, %IMF@102 and REA@92
- Out of a first calf heifer
- Top 25% of the breed for YW, top 35% for WW, and top 45% for BW and CW

41 NA HOMESTEAD 905

DOB: 1/18/2019 • Reg: 19610103 • Tattoo: 905



%IMF	4.82
%IMF RATIO	103
REA	12.5
REA RATIO	100
RIB FAT	0.17
RUMP FAT	0.27

BW	78
Act WW	683
Adj 205	655
Adj 365	1244
Scrotal	33

#CTS Remedy 1T01
 Ellingson Homestead 6030
 EA Erica 1082
 #S A V Registry 2831
 NA Miss Sana 729
 NA Miss Sana 356

CED	BW	WW	Milk	YW	SC	Marb	RE	Fat	\$M	\$W	\$F	\$B
8	0.6	57	37	114	0.47	0.2	0.56	0.021	77	71	110	140

- HEIFER BULL
- Individual Performance: BR@97, WW@96, YR@96, %IMF@103 and REA@100
- Out of a first calf heifer
- Ranks in the top 2% for Milk EPD, top 15% for HP, top 20% for YW, Doc and HP and top 35% for CED and BW
- 3/4 brother to Lots 36, 37 and 76



SOME CALL IT THE MIDDLE OF NOWHERE...

I call it the center of my world



Lot 41

Thank you for your interest in our offering at the 2020 Nissen Angus Bull Sale. Our sincere thanks to Jeff and Christie for their friendship and allowing us to market our bulls through their annual sale.



Lane & Taryn Schmitt
 Scott Schmitt
 406.390.2275 Lane's Cell
 schmitt.angus@gmail.com
 www.schmittangus.com

Due to unforeseen circumstances, a semen mix-up and changing calving date, we only have 2 bulls in the offering. Nonetheless we are very excited about these 2 sons of SAV Renown 3439. The 969 bull is the heaviest weaning, and most impressive bull we have raised to date. We really feel he has herd bull potential. We have used Renown on the entire mature cowherd 3 years in a row, that should tell you what we think of the qualities of both the bulls and females.



Thanks again!
 We look forward to seeing you on sale day and if you have any questions please give us a call.

The Schmitts



42 SCHMITT S RENOWN 969

DOB: 3/8/2019 • Reg: 19659578 • Tattoo: 969

BW	92
Act WW	930
Adj 205	924
Adj 365	1334
Scrotal	35

Rito 707 of Ideal 3407 7075
 #SAV Renown 3439
 SAV Blackcap May4136
 Boyd Signature 1014
 #SS Anna 543
 #NA Miss Extra Anna 920

%IMF	5.18
%IMF RATIO	107
REA	13.7
REA RATIO	121
RIB FAT	0.31
RUMP FAT	0.43

CED	BW	WW	Milk	YW	SC	Marb	RE	Fat	\$M	\$W	\$F	\$B
-8	3.6	85	27	136	1.10	0.20	0.65	0.039	60	85	84	113

- HERD BULL POTENTIAL
- Individual Performance: WR@130, YR@117
- Pathfinder Dam's Record: 3WR@120, 2YR@113 and 2REA@110
- Pathfinder Granddam's Record: 9WR@106, 6YR@106 and 6 IMF@113
- March calf with extra length & thickness - this guy has been a standout since birth
- Dam is a bigger framed, performance cow

43 SCHMITT RENOWN 909

DOB: 3/9/2019 • Reg: 19659557 • Tattoo: 909

BW	75
Act WW	672
Adj 205	696
Adj 365	1070
Scrotal	33

Rito 707 of Ideal 3407 7075
 #SAV Renown 3439
 SAV Blackcap May4136
 #Musgrave Big Sky
 S Alys Jane 600
 S Dash 252

%IMF	4.39
%IMF RATIO	91
REA	10.4
REA RATIO	92
RIB FAT	0.20
RUMP FAT	0.25

CED	BW	WW	Milk	YW	SC	Marb	RE	Fat	\$M	\$W	\$F	\$B
8	-0.1	52	23	93	0.69	0.41	0.51	0.017	73	57	56	96

- HEIFER BULL
- Individual Performance: WR@102, YR@94
- Dam's Record: 2WR@101, 1YR@94
- Great Granddam's Record: 13WR@102, 8YR@104 and 8IMF@108
- Dam is a moderate, feminine cow with an excellent udder
- March Calf



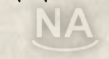
Renown is a full brother to Resource with less birth weight. We used him to produce thick, deep bulls with good performance and moderate framed, easy fleshing, good uddered, and good footed females. We have been very impressed with the Renown progeny and have used him 3 years in a row.



Welcome To The Herd!
 Tel R Schmitt
 Born 3/2/20
 8.0 lbs & 21.5 inches
 Joins proud big brother, Chancin

44 NA FOUNDATION 992

DOB: 2/7/2019 • Reg: 19610032 • Tattoo: 992



BW	91
Act WW	785
Adj 205	700
Adj 365	1345
Scrotal	37.5

#Vision Unanimous 1418
S Foundation 514
#S Lady Ann 8384
Sitz Onward 9007
NA Miss Sana 121Y
NA Miss Sana Play 4244

%IMF	3.79
%IMF RATIO	90
REA	12.2
REA RATIO	98
RIB FAT	0.22
RUMP FAT	0.23

CED	BW	WW	Milk	YW	SC	Marb	RE	Fat	\$M	\$W	\$F	\$B
8	0.0	45	18	85	1.03	0.55	0.23	0.021	73	43	77	120

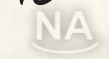
- Individual Performance: WR@98, YR@104, %IMF@90 and REA@98
- Dam's Production: 5WR@101, 2YR@101, 1%IMF@90 and 1REA@98
- Top 2% of the breed for CEM, top 15% for Doc, top 25% for BW, top 30% for HP, top 35% for CED and Scrotal and top 45% for Marb



Lot 44

45 NA FOUNDATION 995

DOB: 2/7/2019 • Reg: 19610024 • Tattoo: 995



BW	88
Act WW	802
Adj 205	714
Adj 365	1282
Scrotal	37.5

#Vision Unanimous 1418
S Foundation 514
#S Lady Ann 8384
#Hoover Dam
#NA Miss Anna 261
NA Miss Anna Design 712



%IMF	4.48
%IMF RATIO	106
REA	12.1
REA RATIO	98
RIB FAT	0.20
RUMP FAT	0.27

CED	BW	WW	Milk	YW	SC	Marb	RE	Fat	\$M	\$W	\$F	\$B
7	0.0	49	25	84	1.67	0.8	0.40	-0.12	70	56	70	131

- Suitable for use on larger heifers
- Individual Performance: BR@99, WR@100, YR@99, %IMF@106 and REA@98
- Dam's Production: 6BR@99, 6WR@104, 6YR@102, 6%IMF@111 and 6REA@97
- Top 10% for Scrotal, top 15% for HP, top 20% for Marb and Fat, top 25% for BW, and top 35% for Doc



Lot 45

46 NA FOUNDATION 960

DOB: 2/3/2019 • Reg: 19610036 • Tattoo: 960



BW	85
Act WW	775
Adj 205	684
Adj 365	1318
Scrotal	36

#Vision Unanimous 1418
S Foundation 514
#S Lady Ann 8384
#Diamond Justice 901S
Diamond Chloe 2831
Diamond Chloe 4398



%IMF	4.55
%IMF RATIO	107
REA	13.5
REA RATIO	109
RIB FAT	0.33
RUMP FAT	0.34

CED	BW	WW	Milk	YW	SC	Marb	RE	Fat	\$M	\$W	\$F	\$B
7	-0.5	42	20	83	1.26	0.77	0.14	0.059	50	39	59	107

- Suitable for use on larger heifers
- Individual Performance: BR@96, WR@96, YR@102, %IMF@107 and REA@109
- Dam's Production: 6BR@93, 6WR@96, 4YR@100, 5%IMF@105 and 5REA@100
- Ranks in the top 15% of the breed for BW, top 20% for Scrotal, top 25% for Marb and top 45% for CED
- Big REA



47 NA FOUNDATION 981

DOB: 2/5/2019 • Reg: 19610002 • Tattoo: 981



BW	77
Act WW	743
Adj 205	658
Adj 365	1309
Scrotal	34

#Vision Unanimous 1418
S Foundation 514
#S Lady Ann 8384
#Sitz JLS Game Day 9630
NA Blackbird 417
Vermilion Blackbird 2616

%IMF	3.46
%IMF RATIO	82
REA	12.2
REA RATIO	98
RIB FAT	0.29
RUMP FAT	0.30

CED	BW	WW	Milk	YW	SC	Marb	RE	Fat	\$M	\$W	\$F	\$B
8	1.5	63	26	110	0.97	0.32	0.28	0.075	69	70	75	102

- HEIFER BULL
- Individual Performance: BR@87, WR@93, YR@102, %IMF@82 and REA@98
- Dam's Production: 4BR@87, 4WR@96, 3YR@103, 3%IMF@83 and 3REA@94
- Top 10% for Doc, top 25% for WW, YW and CEM, top 35% for CED and top 40% for Scrotal, Milk and CW
- 3/4 brother to Lot 16



Lot 47

48 NA FOUNDATION 998

DOB: 2/7/2019 • Reg: 19609983 • Tattoo: 998



BW	89
Act WW	757
Adj 205	690
Adj 365	1242
Scrotal	35

#Vision Unanimous 1418
S Foundation 514
#S Lady Ann 8384
NA Confidence 305A
NA Miss Dolly 552
NA Miss Dolly 127Y

%IMF	4.06
%IMF RATIO	96
REA	13.4
REA RATIO	108
RIB FAT	0.31
RUMP FAT	0.31

CED	BW	WW	Milk	YW	SC	Marb	RE	Fat	\$M	\$W	\$F	\$B
4	-0.2	52	15	90	0.62	0.38	0.3	0.063	53	49	71	102

- Suitable for use on larger heifers
- Individual Performance: WR@97, YR@96, %IMF@96 and REA108
- Dam's Production: 3BR@96, 3WR@97, 1YR@96, 1%IMF@85 and 1REA@108
- Top 10% for CEM and top 20% for BW
- Big REA



Lot 49

50 NA JET 9181

DOB: 3/15/2019 • Reg: 19608200 • Tattoo: 9181



BW	94
Act WW	720
Adj 205	775
Adj 365	1477
Scrotal	35

Connealy Jet 4405
Clear Creek Jet 645
#Cca Annie 253
A A R Hilger 1110
NA Satin Doll 413B
NA Miss Maker JCN 210Z

%IMF	4.11
%IMF RATIO	100
REA	12.7
REA RATIO	102
RIB FAT	0.17
RUMP FAT	0.21

CED	BW	WW	Milk	YW	SC	Marb	RE	Fat	\$M	\$W	\$F	\$B
4	3.6	61	27	107	0.49	0.24	0.36	0.023	49	58	90	120

- Twin w/bull
- Individual Performance: WR@109, YR@114, %IMF@100 and REA@102
- Dam's Production: 2WR@110, 1YR@117, 1%IMF@100 and 1REA@102
- Ranks in the top 10% of the breed for HP EPD, top 20% for CW, top 30% for WW and YW, and top 35% for CEM and Milk

52 NA JET 9159

DOB: 3/2/2019 • Reg: 19608198 • Tattoo: 9159



BW	101
Act WW	724
Adj 205	699
Adj 365	1273
Scrotal	32

Connealy Jet 4405
Clear Creek Jet 645
#Cca Annie 253
Sitz Onward 9007
NA Satin Doll 402B
NA Miss Image Maker JN 5515

%IMF	4.21
%IMF RATIO	102
REA	12
REA RATIO	97
RIB FAT	0.25
RUMP FAT	0.34

CED	BW	WW	Milk	YW	SC	Marb	RE	Fat	\$M	\$W	\$F	\$B
8	2.1	56	33	98	-0.22	0.46	0.28	0.035	49	63	72	110

- Individual Performance: WR@98, YR@98, %IMF@102 and REA@97
- Dam's Production: 3WR@97, 2YR@102, 2%IMF@90 and 2REA@98
- Ranks in the top 10% for Milk, top 25% for HP, top 35% for CED and top 45% for WW and CEM
- 3/4 brother to Lots 26, 57 and 51



Lot 48

49 NA FOUNDATION 962

DOB: 2/3/2019 • Reg: 19610016 • Tattoo: 962



BW	93
Act WW	751
Adj 205	665
Adj 365	1267
Scrotal	38.5

#Vision Unanimous 1418
S Foundation 514
#S Lady Ann 8384
KG Rainmaker 9208
NA Miss Bridget 267Z
NA Miss Bridget 9902

%IMF	2.54
%IMF RATIO	60
REA	12
REA RATIO	97
RIB FAT	0.15
RUMP FAT	0.20

CED	BW	WW	Milk	YW	SC	Marb	RE	Fat	\$M	\$W	\$F	\$B
4	2.2	41	26	80	1.84	0.06	0.39	0.002	69	43	97	120

- Individual Performance: WR@94, YR@98, %IMF@60 and REA@97
- Dam's Production: 5WR@96, 4YR@99, 4%IMF@82 and 4REA@99
- Top 4% of the breed for Scrotal, top 15% for Doc, top 40% for Milk and Fat and top 50% for HP

51 NA JET 9187

DOB: 3/19/2019 • Reg: 19608183 • Tattoo: 9187



BW	97
Act WW	773
Adj 205	769
Adj 365	1411
Scrotal	34

Connealy Jet 4405
Clear Creek Jet 645
#Cca Annie 253
Sitz Onward 9007
NA Miss Anna 0026
NA Miss Sana Anna 2205

%IMF	3.03
%IMF RATIO	75
REA	13.1
REA RATIO	106
RIB FAT	0.20
RUMP FAT	0.19

CED	BW	WW	Milk	YW	SC	Marb	RE	Fat	\$M	\$W	\$F	\$B
1	3.3	65	36	125	0.39	0.32	0.67	0.001	19	66	87	127

- Individual Performance: WR@108, YR@109, %IMF@75 and REA@106
- Dam's Production: 7WR@109, 5YR@110, 6%IMF@96 and 6REA@106
- Top 3% for Milk, top 10% for YW, top 15% for CW, top 20% for WW, top 30% for RE and top 35% for Fat
- 3/4 brother to Lot 26, 27 and 52
- Big REA

53 NA JET 9123

DOB: 2/14/2019 • Reg: 19608193 • Tattoo: 9123



BW	97
Act WW	716
Adj 205	650
Adj 365	1285
Scrotal	37

Connealy Jet 4405
Clear Creek Jet 645
#Cca Annie 253
S John Wayne
Vermilion Queen 2296
Vermilion Queen 8090

%IMF	4.27
%IMF RATIO	102
REA	12.3
REA RATIO	99
RIB FAT	0.17
RUMP FAT	0.23

CED	BW	WW	Milk	YW	SC	Marb	RE	Fat	\$M	\$W	\$F	\$B
1	0.8	48	38	85	1.38	0.58	0.34	0.014	41	63	83	130

- Individual Performance: WR@91, YR@99, %IMF@102 and REA@99
- Dam's Production: 6BR@98, 6WR@93, 3YR@94, 4%IMF@86 and 4REA@104
- Top 2% for Milk, top 15% for Scrotal, top 20% for HP, top 40% for BW and top 45% for Marb



54 NA REGISTRY 9145

DOB: 2/25/2019 • Reg: 19608192 • Tattoo: 9145



BW	95
Act WW	767
Adj 205	714
Adj 365	1263
Scrotal	35.5

#S A V Registry 2831
 NA Registry 521
 H A R B Ebony Erica 912
 Sitz Onward 9007
 NA Elsiemere 212Z
 NA Elsiemere 7719



%IMF	3.91
%IMF RATIO	94
REA	12.2
REA RATIO	98
RIB FAT	0.18
RUMP FAT	0.21

CED	BW	WW	Milk	YW	SC	Marb	RE	Fat	\$M	\$W	\$F	\$B
5	1.5	56	25	100	1.28	0.57	0.38	0.003	26	54	92	140

- Individual Performance: WR@100, YR@98, %IMF@94 and REA@98
- Dam's Production: 5WR@96, 2YR@93, 1%IMF@94 and 1REA@98.
- Ranks in the top 20% for Scrotal, top 30% for CW, top 40% for Fat and top 45% for WW, YW and Marb
- 3/4 brother to Lots 23, 24, 25, 55 and 56

56 NA REGISTRY 9151

DOB: 2/28/2019 • Reg: 19608205 • Tattoo: 9151



BW	93
Act WW	708
Adj 205	680
Adj 365	1203
Scrotal	35.5

#S A V Registry 2831
 NA Registry 521
 H A R B Ebony Erica 912
 Sitz Onward 9007
 NA Lady 454B
 NA Miss Image Time 718

%IMF	3.54
%IMF RATIO	86
REA	11
REA RATIO	89
RIB FAT	0.20
RUMP FAT	0.18

CED	BW	WW	Milk	YW	SC	Marb	RE	Fat	\$M	\$W	\$F	\$B
9	0.5	48	31	86	1.11	0.14	0.21	-0.015	42	57	66	93

- Individual Performance: WR@96, YR@93, %IMF@86 and REA@89
- Dam's Production: 3BR@97, 3WR@94, 1YR@93, 1%IMF@86 and 1REA@98
- Ranks in the top 15% for Milk, top 20% for Fat, top 30% for CED and Scrotal, top 35% for BW and top 40% for HP EPD
- 3/4 brother to Lots 23, 24, 25, 54 and 55

58 NA DROVER 972

DOB: 2/4/2019 • Reg: 19618192 • Tattoo: 972



BW	81
Act WW	716
Adj 205	649
Adj 365	1201
Scrotal	34.5

#CTS Remedy 1T01
 Ellingson Drover 6034
 EA Primrose 9155
 NA Consensus 7229 330
 NA Miss Samantha 559
 NA Miss Samantha JCN 224Z



%IMF	5.43
%IMF RATIO	128
REA	12.5
REA RATIO	101
RIB FAT	0.26
RUMP FAT	0.21

CED	BW	WW	Milk	YW	SC	Marb	RE	Fat	\$M	\$W	\$F	\$B
9	-1.4	43	27	95	0.25	0.64	0.39	0.016	54	45	93	142

- HEIFER BULL
- Individual Performance: BR@92, WR@91, YR@93, %IMF@128 and REA@101
- Dam's Production: 3BR@94, 3WR@97, 2YR@98, 2%IMF@110 and 2REA@104
- Top 10% for BW, top 30% for CED and Doc, top 35% for CEM, Milk and Marb, and top 40% for HP
- High %IMF

59 NA FINAL OPTION CA 9161

DOB: 3/3/2019 • Reg: 19612723 • Tattoo: 9161



BW	82
Act WW	715
Adj 205	707
Adj 365	1288
Scrotal	34

Carter Final Option 201
 Hilltop Final Option 5297
 #Hilltop Shoshone 273
 #GDAR CJD Alliance 0714
 CoreyA Everelda Entense 509C
 #CoreyA Everelda Entense 7727

%IMF	3.37
%IMF RATIO	75
REA	11.8
REA RATIO	94
RIB FAT	0.23
RUMP FAT	0.27

CED	BW	WW	Milk	YW	SC	Marb	RE	Fat	\$M	\$W	\$F	\$B
11	-0.1	59	32	102	0.71	0.17	0.37	0.02	52	74	66	92

- HEIFER BULL
- Individual Performance: BR@96, WR@104, YR@100, %IMF@75 and REA@94
- Dam's Production: 2BR@99, 2WR@101, 1YR@100, 1%IMF@75 and 1REA@94
- Top 10% for Milk, top 15% for CED, top 25% for BW, top 35% for WW and top 40% for YW

55 NA REGISTRY 9148

DOB: 2/26/2019 • Reg: 19608203 • Tattoo: 9148



BW	92
Act WW	773
Adj 205	736
Adj 365	1294
Scrotal	34

#S A V Registry 2831
 NA Registry 521
 H A R B Ebony Erica 912
 Sitz Onward 9007
 NA Everelda Entense 450B
 NA Everelda Entense 7715

%IMF	4.37
%IMF RATIO	105
REA	11.7
REA RATIO	94
RIB FAT	0.23
RUMP FAT	0.13

CED	BW	WW	Milk	YW	SC	Marb	RE	Fat	\$M	\$W	\$F	\$B
9	1.1	64	25	118	0.17	0.49	0.18	0.021	38	64	102	141

- Individual Performance: WR@104, YR@100, %IMF@105 and REA@94
- Dam's Production: 3BR@99, 3WR@101, 2YR@103, 1%IMF@105, 1REA@94
- Top 15% for YW and CW, top 20% for WW, top 30% for CED, top 40% for Doc and top 45% for BW EPD
- 3/4 brother to Lots 23, 24, 25, 54 and 56

57 NA DROVER 950

DOB: 1/31/2019 • Reg: 19618194 • Tattoo: 950



BW	90
Act WW	792
Adj 205	696
Adj 365	1258
Scrotal	37

#CTS Remedy 1T01
 Ellingson Drover 6034
 EA Primrose 9155
 #Connealy Final Product
 NA Miss Anna 407
 NA Miss Anna 215

%IMF	3.5
%IMF RATIO	82
REA	12.3
REA RATIO	99
RIB FAT	0.15
RUMP FAT	0.21

CED	BW	WW	Milk	YW	SC	Marb	RE	Fat	\$M	\$W	\$F	\$B
1	-0.1	60	26	107	1.1	0.45	0.65	0.024	57	66	100	143

- Individual Performance: WR@98, YR@97, %IMF@82 and REA@99
- Dam's Production: 4BR@100, 4WR@101, 2YR@97, 2%IMF@93 and 2REA@98
- Top 25% for BW, top 30% for YW and Scrotal, top 35% for WW and RE and top 40% for HP, Milk and CW



60 NA FINAL OPTION 959

DOB: 2/2/2019 • Reg: 19608225 • Tattoo: 959



BW	80
Act WW	669
Adj 205	629
Adj 365	1290
Scrotal	37.5

Carter Final Option 201
 Hilltop Final Option 5297
 #Hilltop Shoshone 273
 McD SF Waylon 4550
 NA Miss Lucky 688
 NA Miss Lucky 260Z

%IMF	3.76
%IMF RATIO	81
REA	12.3
REA RATIO	98
RIB FAT	0.30
RUMP FAT	0.25

CED	BW	WW	Milk	YW	SC	Marb	RE	Fat	\$M	\$W	\$F	\$B
11	0.4	62	32	113	1.23	0.44	0.59	0.024	67	78	72	114

- HEIFER BULL
- Individual Performance: BR@93, WR@92, YR@100, %IMF@81 and REA@98
- Dam's Production: 2BR@93, 2WR@96, 2YR@100, 2%IMF@77 and 2REA@95
- Top 10% for Milk, top 15% for CED, top 20% for YW, top 25% for WW and Scrotal, top 30% for BW and top 45% for CEM, CW and RE
- 3/4 brother to Lots 32, 68 and 69

61 NA FINAL OPTION 9108

DOB: 2/10/2019 • Reg: 19608214 • Tattoo: 9108



BW	63
Act WW	669
Adj 205	637
Adj 365	1275
Scrotal	35

Carter Final Option 201
Hilltop Final Option 5297
#Hilltop Shoshone 273
#S A V Bismarck 5682
NA Miss Blessa 627
NA Miss Blessa 359A

%IMF	4.15
%IMF RATIO	90
REA	12.4
REA RATIO	99
RIB FAT	0.23
RUMP FAT	0.25

CED	BW	WW	Milk	YW	SC	Marb	RE	Fat	\$M	\$W	\$F	\$B
13	-1.1	57	30	106	0.97	0.33	0.67	-.006	43	69	74	115

- HEIFER BULL
- Individual Performance: BR@74, WR@94, YR@99, %IMF@90 and REA@99
- Dam's Production: 2BR@85, 2WR@102, 1YR@99, 1%IMF@90 and 1REA@99
- Top 10% of the breed for CED and BW, top 15% for CEM and Milk, top 30% for RE and Fat, top 35% for YW and top 40% for WW and Scrotal

62 NA FINAL OPTION 937

DOB: 1/28/2019 • Reg: 19608220 • Tattoo: 937



BW	78
Act WW	687
Adj 205	638
Adj 365	1220
Scrotal	34

Carter Final Option 201
Hilltop Final Option 5297
#Hilltop Shoshone 273
S A V Recharge 3436
NA Miss Dolly 651
NA Miss Dolly 127Y

%IMF	5.88
%IMF RATIO	127
REA	11.4
REA RATIO	91
RIB FAT	0.28
RUMP FAT	0.39

CED	BW	WW	Milk	YW	SC	Marb	RE	Fat	\$M	\$W	\$F	\$B
9	-0.6	58	28	100	0.67	0.45	0.64	0.036	63	72	75	116

- HEIFER BULL
- Individual Performance: BR@91, WR@94, YR@95, %IMF@127 and REA@91
- Dam's Production: 2BR@96, 2WR@97, 2YR@100, 2%IMF@116 and 2REA@104
- Ranks in the top 15% of the breed for BW, top 25% for Milk, top 30% for CED
- 3/4 brother to Lots 7 and 35
- High %IMF



63 NA PRAIRIE PRIDE 9138

DOB: 2/23/2019 • Reg: 19608210 • Tattoo: 9138



BW	96
Act WW	727
Adj 205	704
Adj 365	1259
Scrotal	30

Prairie Pride Premium 407
Hilltop Prairie Pride 4677
#Hilltop Perfection MP 410
#GDAR CJD Alliance 0714
NA Elsiemere 536C
NA Elsiemere 212Z



%IMF	4.47
%IMF RATIO	98
REA	11.7
REA RATIO	94
RIB FAT	0.23
RUMP FAT	0.32

CED	BW	WW	Milk	YW	SC	Marb	RE	Fat	\$M	\$W	\$F	\$B
5	2.6	55	34	91	-0.75	0.61	0.44	0.036	58	67	56	103

- Individual Performance: WR@103, YR@98, %IMF@98 and REA@94
- Dam's Production: 2WR@103, 2YR@98, 2%IMF@93 and 2REA@96
- Top 5% for Milk, top 25% for Doc, top 40% for Marb and top 50% for WW
- 3/4 brother to Lot 64



64 NA PRAIRIE PRIDE 9183

DOB: 3/16/2019 • Reg: 19608209 • Tattoo: 9183



BW	89
Act WW	673
Adj 205	694
Adj 365	1315
Scrotal	34

Prairie Pride Premium 407
Hilltop Prairie Pride 4677
#Hilltop Perfection MP 410
#GDAR CJD Alliance 0714
NA Elsiemere 510C
#NA Elsiemere 262Z

%IMF	4.06
%IMF RATIO	91
REA	13.6
REA RATIO	109
RIB FAT	0.31
RUMP FAT	0.30

CED	BW	WW	Milk	YW	SC	Marb	RE	Fat	\$M	\$W	\$F	\$B
11	0.7	63	27	109	1.08	0.55	0.4	0.056	69	74	82	123

- Individual Performance: WR@102, YR@102, %IMF@91 and REA@109
- Dam's Production: 2WR@102, 1YR@102, 1%IMF@91 and 1REA@109
- Top 4% for Doc, top 15% for CED, top 25% for WW, top 30% for YW, Scrotal and CW, top 35% for Milk, top 40% for BW and top 45% for Marb
- 3/4 brother to Lot 63
- Big REA

65 NA PRAIRIE PRIDE 9169

DOB: 3/6/2019 • Reg: 19608206 • Tattoo: 9169



BW	91
Act WW	707
Adj 205	706
Adj 365	1301
Scrotal	33.5

Prairie Pride Premium 407
Hilltop Prairie Pride 4677
#Hilltop Perfection MP 410
S A V Ten Speed 3022
NA Blackcap 501C
SD Blackcap 86178

%IMF	3.43
%IMF RATIO	77
REA	12.9
REA RATIO	103
RIB FAT	0.22
RUMP FAT	0.20

CED	BW	WW	Milk	YW	SC	Marb	RE	Fat	\$M	\$W	\$F	\$B
8	1.7	49	25	88	0.64	0.39	0.48	0.017	47	51	77	116

- Individual Performance: WR@104, YR@101, %IMF@77 and REA@103
- Dam's Production: 2WR@105, 2YR@101, 2%IMF@88 and 2REA@95
- Top 35% of the breed for CED and top 45% for CEM

66 NA PRAIRIE PRIDE 9103

DOB: 2/9/2019 • Reg: 19608216 • Tattoo: 9103



BW	94
Act WW	721
Adj 205	685
Adj 365	1231
Scrotal	38

Prairie Pride Premium 407
Hilltop Prairie Pride 4677
#Hilltop Perfection MP 410
S A V Recharge 3436
NA Miss Pride 630
NA Miss Pride 125

%IMF	6.48
%IMF RATIO	141
REA	11.8
REA RATIO	94
RIB FAT	0.20
RUMP FAT	0.25

CED	BW	WW	Milk	YW	SC	Marb	RE	Fat	\$M	\$W	\$F	\$B
9	2.2	60	21	102	0.74	0.67	0.54	0.012	58	58	72	126

- Individual Performance: WR@101, YR@96, %IMF@141 and REA@94
- Dam's Production: 1WR@101, 1YR@96, 1%IMF@141 and 1REA@94
- Top 10% for Doc, top 30% for CED, top 35% for WW, CW and Marb, top 40% for YW and top 45% for CEM
- Highest %IMF in the sale

67 NA PRAIRIE PRIDE 965

DOB: 2/3/2019 • Reg: 19608218 • Tattoo: 965



BW	78
Act WW	691
Adj 205	649
Adj 365	1265
Scrotal	36

Prairie Pride Premium 407
Hilltop Prairie Pride 4677
#Hilltop Perfection MP 410

GDAR Leupold 298
NA Comanches Princess 645
NA Comanches Princess 335A

%IMF	3.79
%IMF RATIO	82
REA	13.7
REA RATIO	110
RIB FAT	0.24
RUMP FAT	0.36

CED	BW	WW	Milk	YW	SC	Marb	RE	Fat	\$M	\$W	\$F	\$B
13	-0.1	54	26	92	1.04	0.5	0.55	0.013	61	62	48	94

- HEIFER BULL
- Individual Performance: BR@91, WR@95, YR@98, %IMF@82 and REA@110
- Dam's Production: 2BR@88, 2WR@94, 1YR@98, 1%IMF@82 and 1REA@110
- Ranks in the top 5% for Doc, top 10% for CED, top 15% for CEM, top 25% for BW
- Big REA

68 NA FINAL OPTION 975

DOB: 2/5/2019 • Reg: 19608212 • Tattoo: 975



BW	86
Act WW	681
Adj 205	643
Adj 365	1235
Scrotal	36

Carter Final Option 201
Hilltop Final Option 5297
#Hilltop Shoshone 273

McD SF Waylon 4550
NA Miss Lucky 6123
NA Miss Lucky 237Z

%IMF	5.41
%IMF RATIO	117
REA	12.6
REA RATIO	101
RIB FAT	0.26
RUMP FAT	0.34

CED	BW	WW	Milk	YW	SC	Marb	RE	Fat	\$M	\$W	\$F	\$B
9	-0.5	50	24	94	0.54	0.31	0.65	0.002	65	54	87	126

- Suitable for use on larger heifers
- Individual Performance: BR@100, WR@94, YR@96, %IMF@117 and REA@101
- Dam's Production: 2BR@96, 2WR@99, 2YR@97, 2%IMF@113 and 2REA@104
- Top 10% for CEM, top 115% for BW and HP, top 30% for CED, top 35% for RE
- 3/4 brother to Lots 32, 60 and 69
- High %IMF

69 NA FINAL OPTION 9104

DOB: 2/9/2019 • Reg: 19608222 • Tattoo: 9104



BW	86
Act WW	663
Adj 205	633
Adj 365	1220
Scrotal	35.5

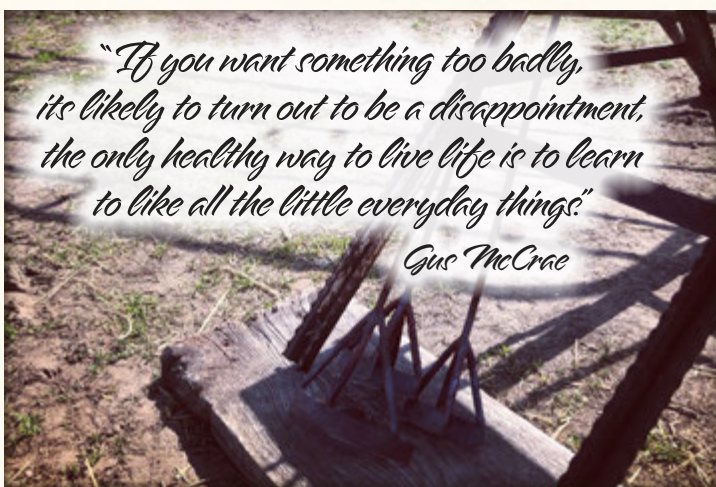
Carter Final Option 201
Hilltop Final Option 5297
#Hilltop Shoshone 273

McD SF Waylon 4550
NA Lass 664
NA Miss Onward Lass 9968

%IMF	2.88
%IMF RATIO	62
REA	11.9
REA RATIO	95
RIB FAT	0.19
RUMP FAT	0.25

CED	BW	WW	Milk	YW	SC	Marb	RE	Fat	\$M	\$W	\$F	\$B
6	2.2	52	35	100	1.08	-0.12	0.64	0.005	68	64	87	105

- Individual Performance: WR@93, YR@95, %IMF@62 and REA@95
- Dam's Production: 2BR@98, 2WR@95, 1YR@95, 1%IMF@62 and 1REA@95
- Top 4% for Milk, top 10% for CEM, top 25% for HP, top 30% for Scrotal, top 35% for Doc, CW and RE, and top 45% for YW and Fat EPD
- 3/4 brother to Lots 32, 60 and 68



70 NA FINAL OPTION 9154

DOB: 2/28/2019 • Reg: 19608217 • Tattoo: 9154



BW	84
Act WW	659
Adj 205	657
Adj 365	1268
Scrotal	33

Carter Final Option 201
Hilltop Final Option 5297
#Hilltop Shoshone 273

GDAR Leupold 298
NA Miss Anna 632
NA Miss Anna 352A

%IMF	5.84
%IMF RATIO	128
REA	11.9
REA RATIO	95
RIB FAT	0.22
RUMP FAT	0.23

CED	BW	WW	Milk	YW	SC	Marb	RE	Fat	\$M	\$W	\$F	\$B
6	0.4	59	27	97	-0.17	0.85	0.35	-0.02	56	71	54	117

- Suitable for use on larger heifers
- Individual Performance: BR@98, WR@96, YR@98, %IMF@128 and REA@95
- Dam's Production: 2WR@97, 1YR@98, 1%IMF@128 and 1REA@95
- Top 15% for Fat, top 20% for Marb, top 30% for BW, top 35% for WW and Milk
- 3/4 brother to Lot 71
- High %IMF

71 NA FINAL OPTION 969

DOB: 2/4/2019 • Reg: 19608219 • Tattoo: 969



BW	83
Act WW	715
Adj 205	672
Adj 365	1178
Scrotal	37.5

Carter Final Option 201
Hilltop Final Option 5297
#Hilltop Shoshone 273

GDAR Leupold 298
NA Primrose Pride 650
NA Primrose Pride 354A

%IMF	4.16
%IMF RATIO	90
REA	12.7
REA RATIO	102
RIB FAT	0.22
RUMP FAT	0.21

CED	BW	WW	Milk	YW	SC	Marb	RE	Fat	\$M	\$W	\$F	\$B
12	-1.0	57	34	94	0.84	0.37	0.42	0.023	69	78	62	99

- HEIFER BULL
- Individual Performance: BR@97, WR@99, YR@92, %IMF@90 and REA@102
- Dam's Production: 2BR@99, 2WR@97, 2YR@93, 2%IMF@91 and 2REA@97
- Top 5% for Milk, top 10% for CED and BW, top 40% for WW and top 45% for Scrotal, HP and CEM EPD
- 3/4 brother to Lot 70

72 NA FINAL OPTION 9115

DOB: 2/11/2019 • Reg: 19608207 • Tattoo: 9115



BW	83
Act WW	650
Adj 205	615
Adj 365	1101
Scrotal	31

Carter Final Option 201
Hilltop Final Option 5297
#Hilltop Shoshone 273

S A V Ten Speed 3022
NA Blackcap 502C
SD Blackcap X653

%IMF	4.24
%IMF RATIO	92
REA	11.3
REA RATIO	90
RIB FAT	0.20
RUMP FAT	0.27

CED	BW	WW	Milk	YW	SC	Marb	RE	Fat	\$M	\$W	\$F	\$B
9	0.3	49	28	93	0.24	0.51	0.4	0.015	27	56	55	99

- HEIFER BULL
- Individual Performance: BR@97, WR@90, YR@85, %IMF@92 and REA@90
- Dam's Production: 2BR@98, 2WR@94, 1YR@85, 1%IMF@92 and 1REA@90
- Ranks in the top 25% of the breed for Milk, top 30% for CED and BW and top 50% for Marb

73 NA REGISTRY 9116

DOB: 2/11/2019 • Reg: 19608202 • Tattoo: 9116



BW	93
Act WW	734
Adj 205	676
Adj 365	1185
Scrotal	31.5

#S A V Registry 2831
 NA Registry 521
 H A R B Ebony Erica 912
 KG Rainmaker 9208
 NA Princene 425B
 NA Miss Sana 121Y

%IMF	4.82
%IMF RATIO	114
REA	11.5
REA RATIO	93
RIB FAT	0.17
RUMP FAT	0.25

CED	BW	WW	Milk	YW	SC	Marb	RE	Fat	\$M	\$W	\$F	\$B
7	1.2	59	28	100	-0.24	0.27	0.3	0.021	51	69	90	120

- Individual Performance: WR@95, YR@92, %IMF@114 and REA@93
- Dam's Production: 3WR@84, 1YR@92, 1%IMF@114 and 1REA@93
- Top 25% for Milk and CW, top 35% for WW, top 45% for CED and YW and top 50% for BW EPD
- High %IMF

75 NA HOMESTEAD 923

DOB: 1/25/2019 • Reg: 19610088 • Tattoo: 923



BW	75
Act WW	654
Adj 205	637
Adj 365	1245
Scrotal	34

#CTS Remedy 1T01
 Ellingson Homestead 6030
 EA Erica 1082
 S A V Recharge 3436
 NA Posey Star 749
 Corey A Posey Star 605S

%IMF	5.41
%IMF RATIO	116
REA	11
REA RATIO	88
RIB FAT	0.24
RUMP FAT	0.25

CED	BW	WW	Milk	YW	SC	Marb	RE	Fat	\$M	\$W	\$F	\$B
1	2.8	62	25	117	1.58	0.61	0.43	0.012	60	57	83	132

- Individual Performance: BR@93, WR@94, YR@97, %IMF@116 and REA@88
- Out of a first calf heifer
- Ranks in the top 10% for Scrotal, top 15% for YW, top 20% for HP, top 25% for WW and CEM, top 30% for Doc, top 35% for CW and top 40% for Marb
- High %IMF

77 NA FOUNDATION 987

DOB: 2/6/2019 • Reg: 19610007 • Tattoo: 987



BW	82
Act WW	694
Adj 205	617
Adj 365	1164
Scrotal	36.5

#Vision Unanimous 1418
 S Foundation 514
 #S Lady Ann 8384
 A A R Hilger 1110
 NA Eileen Lass 406
 JF Eileen Lass U34

%IMF	4.84
%IMF RATIO	114
REA	9.9
REA RATIO	80
RIB FAT	0.19
RUMP FAT	0.25

CED	BW	WW	Milk	YW	SC	Marb	RE	Fat	\$M	\$W	\$F	\$B
6	0.2	31	17	57	0.77	0.5	-0.24	0.051	50	29	54	85

- HEIFER BULL
- Individual Performance: BR@92, WR@87, YR@90, %IMF@114 and REA@80
- Dam's Production: 4BR@93, 4WR@92, 3YR@91, 3%IMF@103 and 3REA@89
- Top 4% for CEM, top 30% for BW and top 50% for CED and Scrotal
- High %IMF

74 NA REGISTRY 9133

DOB: 2/21/2019 • Reg: 19608227 • Tattoo: 9133



BW	85
Act WW	714
Adj 205	672
Adj 365	1147
Scrotal	33

#S A V Registry 2831
 NA Registry 521
 H A R B Ebony Erica 912
 LaGrand Brilliance 2011
 SD Blackcap 4483
 SD Blackcap 86178

%IMF	4.23
%IMF RATIO	101
REA	13.5
REA RATIO	109
RIB FAT	0.18
RUMP FAT	0.21

CED	BW	WW	Milk	YW	SC	Marb	RE	Fat	\$M	\$W	\$F	\$B
4	-0.1	39	30	71	0.49	0.59	0.38	0.017	51	50	44	91

- Suitable for use on larger heifers
- Individual Performance: BR@97, WR@95, YR@89, %IMF@101 and REA@109
- Dam's Production: 3BR@100, 3WR@93, 1YR@89, 1%IMF@101 and 1REA@109
- Top 15% for Milk, top 25% for BW and top % for Marb EPD
- Big REA

76 NA HOMESTEAD 924

DOB: 1/25/2019 • Reg: 19610099 • Tattoo: 924



BW	75
Act WW	646
Adj 205	630
Adj 365	1240
Scrotal	34.5

#CTS Remedy 1T01
 Ellingson Homestead 6030
 EA Erica 1082
 #S A V Registry 2831
 NA Susie 731
 #NA Susie 3114

%IMF	4.86
%IMF RATIO	104
REA	11.6
REA RATIO	93
RIB FAT	0.27
RUMP FAT	0.25

CED	BW	WW	Milk	YW	SC	Marb	RE	Fat	\$M	\$W	\$F	\$B
15	-1.8	49	25	96	0.55	0.42	0.12	0.055	51	53	75	106

- HEIFER BULL
- Individual Performance: BR@93, WR@93, YR@96, %IMF@104 and REA@93
- Out of a first calf heifer
- Top 2% for CED, top 4% for BW, top 25% for HP, top 35% for CEM and top 50% for Milk
- 3/4 brother to Lots 36, 37 and 41

78 NA FOUNDATION 971

DOB: 2/4/2019 • Reg: 19609994 • Tattoo: 971



BW	84
Act WW	675
Adj 205	614
Adj 365	1232
Scrotal	36

#Vision Unanimous 1418
 S Foundation 514
 #S Lady Ann 8384
 #GDAR CJD Alliance 0714
 NA Erica 535
 Diamond Erica 1T89

%IMF	3.78
%IMF RATIO	89
REA	10.4
REA RATIO	84
RIB FAT	0.20
RUMP FAT	0.23

CED	BW	WW	Milk	YW	SC	Marb	RE	Fat	\$M	\$W	\$F	\$B
6	-0.1	42	14	78	1.48	0.32	0.08	0.047	40	31	57	84

- HEIFER BULL
- Individual Performance: BR@96, WR@86, YR@95, %IMF@89 and REA@84
- Dam's Production: 3BR@100, 3WR@94, 2YR@99, 2%IMF@93 and 2REA@96
- Top 2% for Doc, top 15% for Scrotal and CEM, top 25% for BW and top 50% for CED
- 3/4 brother to Lots 19 and 20



*"If we all could see the world through the eyes of a child,
 we would see the magic in everything ..."*



79 NA EMULATION 9135

DOB: 2/22/2019 • Reg: 19608215 • Tattoo: 9135



BW	84
Act WW	679
Adj 205	696
Adj 365	1285
Scrotal	34.5

Sinclair Emulation XXP
 21AR Emulation 7172
 21AR Blackbird 4140
 NA Alliance JCN 204Z
 NA Satin Doll 629D
 #NA Miss Power Maker JN 7718

%IMF	5.78
%IMF RATIO	126
REA	11.5
REA RATIO	92
RIB FAT	0.28
RUMP FAT	0.34

CED	BW	WW	Milk	YW	SC	Marb	RE	Fat	\$M	\$W	\$F	\$B
10	1.3	64	32	115	0.79	0.74	0.27	0.061	74	80	93	141

- Suitable for use on larger heifers
- Individual Performance: WR@102, YR@100, %IMF@126 and REA@92
- Dam lost her calf last year as a first calf heifer. We grafted on a commercial calf, so this is her first registered calf on record.
- Top 10% for Milk, top 20% for CED, WW, YW& Doc, top 25% for Marb
- High %IMF

80 NA JET 9136

DOB: 2/22/2019 • Reg: 19608185 • Tattoo: 9136



BW	73
Act WW	673
Adj 205	621
Adj 365	1210
Scrotal	32.5

Connealy Jet 4405
 Clear Creek Jet 645
 #Cca Annie 253
 #S A V Iron Mountain 8066
 NA Miss Empress 131
 NA Miss QV Time 215

%IMF	5.4
%IMF RATIO	129
REA	11.8
REA RATIO	95
RIB FAT	0.17
RUMP FAT	0.21

CED	BW	WW	Milk	YW	SC	Marb	RE	Fat	\$M	\$W	\$F	\$B
11	-2.0	38	27	80	0.04	0.45	0.38	0.016	25	41	76	116

- HEIFER BULL
- Individual Performance: BR@82, WR@87, YR@83, %IMF@129 and REA@95
- Dam's Production: 7BR@94, 7WR@94, 7YR@97, 7%IMF@109 and 9REA@94
- Ranks in the top 4% for BW, top 15% for CED, top 25% for CEM and top 35% for Milk
- High %IMF

81 NA JET 9146

DOB: 2/25/2019 • Reg: 19608204 • Tattoo: 9146



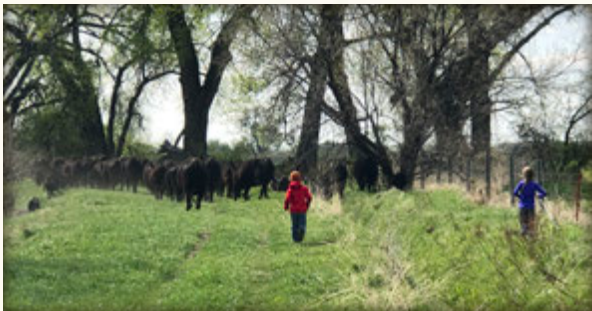
BW	86
Act WW	663
Adj 205	617
Adj 365	1143
Scrotal	32

Connealy Jet 4405
 Clear Creek Jet 645
 #Cca Annie 253
 NA Charge On 902
 NA Miss Pretty 451
 NA Miss Pretty 475 JN

%IMF	6.07
%IMF RATIO	145
REA	10.1
REA RATIO	81
RIB FAT	0.19
RUMP FAT	0.27

CED	BW	WW	Milk	YW	SC	Marb	RE	Fat	\$M	\$W	\$F	\$B
8	-0.6	37	24	72	-0.2	0.53	0.35	0.018	49	39	38	82

- Individual Performance: BR@97, WR@87, YR@89, %IMF@145 and REA@81
- Dam's Production: 4WR@94, 4YR@96, 4%IMF@102 and 4REA@89
- Top 15% of the breed for BW, top 35% for CED and CEM and top 50% for HP and Marb EPD
- Fourth highest %IMF in the sale



The mud will wash off but the memories will last a lifetime

SQUARE B MILESTONE 7143

DOB: 9/2/2017 • Reg#: 19167792



Kate Roberts

Semen Available

For US & Canadian Export



Owned with Square B Cattle Company Warsaw, MO

PRODUCTION						CARCASS				\$VALUES			
CED	BW	WW	MILK	YW	SC	CW	Marb	RE	Fat	\$M	\$W	\$F	\$B
+9	-0.2	+54	+23	+93	+1.41	+37	-0.12	+0.67	+0.014	+27	+54	+79	+96

Milestone is sired by the phenotype king and superior female maker, SAV Sensation 5615. Sensation is a SAV Registry 2831 son owned by Herbster Angus Farms and Schaff's Angus Valley. Sensation was the high selling lot in Schaff's 2016 sale for \$650,000.

Milestone is a super complete, square made, moderate framed, beautiful fronted stud sire. Look for him to sire the kind of females that you will want in front pasture and sons that will be super complete, well balanced with plenty of extension and loaded with plenty of top and hip.

Milestone's dam is the famous Eura Elga of Conanga 9109. Her impressive progeny include Connealy Black Granite, the \$80,000 feature at Connealy's 2012 spring sale, and a leader in registrations. She also produced Connealy Western Cut, the \$70,000 feature of the 2013 Connealy spring sale and Connealy Concord, the \$100,000 feature of the 2016 Connealy spring sale.

His first calves hit the ground in the spring of 2020 and we have been very happy with them. They come easy and unassisted, have tons of vigor and take off growing from the start.

WWW.NISSENANGUS.COM



Jeff & Christie Nissen

PO Box 1508 • Chinook, MT 59523
406.357.2643 • info@nissenangus.com



Nissen Angus Inc.
Jeff & Christie Nissen
PO Box 1508
Chinook, MT 59523

POSTMASTER: TIME DATED MATERIAL
RETURN SERVICE REQUESTED

PRESORTED
FIRST-CLASS MAIL
U.S. POSTAGE PAID
LivestockDirect
PERMIT NO. 29



WWW.NISSENANGUS.COM

