

Nissen ANGUS^{INC}

Annual Production Sale

WEDNESDAY

APRIL 5, 2023

BLAINE COUNTY FAIRGROUNDS - CHINOOK, MT

LUNCH AT 11:30 - SALE AT 1:00



Lot 12 - NA Exclusive 284

Annual Production Sale
Wednesday - April 5, 2023
Blaine County Fairgrounds • Chinook, MT
Lunch at 11:30 • Sale at 1:00

SALE DAY PHONES

Jeff's Cell 406-949-1101
Christie's Cell 406-262-4125

AUCTIONEER

Roger Jacobs 406-698-7686

SPECIAL REPRESENTATIVES

Kurt Kangas 406-366-4190
American Angus Association
Devin Murnin 406-696-1502
Western Livestock Journal
Bo Bevis 406-390-3134
Northern Livestock Video

ABSENTEE BIDDING

Absentee bidding can be made in confidence with any representative, the auctioneer, online at NorthernLivestockVideo.com or directly with Nissen Angus. We will also have phone representatives available on sale day as well if you prefer to bid over the phone.



Online and phone bidding available at
www.northernlivestockvideo.com
See page 2 for instructions.

SIGHT UNSEEN GUARANTEE

We are confident that you will be happy with any absentee purchases you make. However, if for any reason you aren't satisfied upon delivery, you are not obligated to own the bull. **We guarantee 100% satisfaction on all purchases.**

INSPECTION

The bulls are on feed and available for viewing at Hould Bull Development Center, located at 5867 Hwy 363 southwest of Malta, MT. They will be available for inspection at the Blaine County Fairgrounds in Chinook, MT starting the afternoon of Monday, April 3rd.

FIRST SEASON BREEDING GUARANTEE

Bulls are guaranteed to be sound and healthy breeders with a first breeding season guarantee. Breeding season is defined as the first 60 days following turnout. All bulls selling will be given 50% of the value of the injured bull minus salvage value as credit in a future sale or towards a replacement bull if one is available. **Please contact us as soon as possible should an injury occur.**

VIDEOS OF THE BULLS ARE AVAILABLE AT

www.nissenangus.com
www.northernlivestockvideo.com



HEALTH

All bulls have been semen tested and given a complete breeding physical by Dr. Brock Aiton of Aiton Veterinary Services, (406)390-5029. They are current on immunizations, have been vaccinated with Fusoguard for footrot and tested negative for BVD-PI.

TERMS AND CONDITIONS

This sale is being conducted under the suggested sale terms and conditions adopted by the American Angus Association. Announcements from the auction block take precedence over the information in this catalog. Settlement must be at time of sale unless prior arrangements have been made with Nissen Angus.

SALE ORDER

Bulls will sell in catalog order.

RETAINED INTEREST

Nissen Angus is retaining 1/3 revenue share on every bull sold in this sale. This allows for the right to share in the collection of semen and the right to share semen and certificate revenue should the opportunity arise. **Full possession and full salvage value sells on all bulls.**

TRUCKING AND DELIVERY

We will offer free delivery within Montana on all bulls purchased. Further distances will be billed at cost. **Buyers who pick up their bulls at the sale site on sale day or the day after will be given a \$50 rebate per bull.**

PERFORMANCE INFORMATION

EPDs are current as of March 7, 2023. Updated EPDs can be viewed online at www.angus.org. All bulls selling were HD50K tested and their EPDs are genomically enhanced. All bulls were ultrasounded for carcass merit by AAA certified technician, Sonja Gregory.



All bulls selling have genomically enhanced EPDs via Zoetis HD50K testing

ACCOMADATIONS

Chinook Motor Inn 406-357-2248
Bear Paw Court 406-357-2221

AIRPORT

Edgar G. Obie Airport - Located on the west side of Chinook. Please call 406-357-2643 in advance to make arrangements

LIABILITY

All persons who attend the sale do so at their own risk. Nissen Angus and all other sale staff assume no liability, legal or otherwise.

**PLEASE BRING THIS CATALOG
WITH YOU ON SALE DAY**



Hello Fellow Producers!

We'd like to invite you to our **Annual Production Sale on April 5th at the Blaine County Fairgrounds in Chinook, MT.** The bulls will be available at the fairgrounds for viewing on the afternoon of Monday, April 3rd.

It's been a year of sweat, blood, drought, dust and tears. This spring, the drought forced us to make the heartbreaking decision to sell some cows. We held on to the core of our herd – the cows that have proven themselves year after year and the ones we know will do their job in the toughest of times. We look at this drought as an opportunity to really focus on the fundamentals and scrutinize the productivity and profitability of our cattle more than we ever have.

Summer was well underway by the time we turned out to “summer” pasture. We hauled out on July 1st and I think I saw a cow or two kiss the ground when they came off the trailer. Even though the grass wasn't as plentiful or green as we had hoped, it was a welcome sight compared to feeding every day. Once we turned out, the cattle were on their own until it was time to wean. Our weaning weights were definitely lighter, which we were expecting, but our breed up was great and all things considered, the cattle were in good condition.

As we look to rebuild after the drought, we are keeping our focus on mother cows that exhibit performance, structural correctness, strong maternal traits and carcass ability. We are working hard to provide our customers with low maintenance, highly functional cattle that perform and pay in pounds. Our customer's success is a direct reflection of our program's success and we place a big emphasis on making sure you are happy with your purchase.

All the bulls have been parent verified, carcass ultrasounded, performance and fertility tested. To provide you with the most predictable and accurate selection tools, **we have also HD50K tested every bull in our sale offering.** These genomic-enhanced EPDs offer increased predictability and valuable insight for the selection process. We have continued to ultrasound our bulls for carcass merit. We feel it's important to provide that data along with all the other selection tools as it gives you a complete representation of each bull's full potential.

The bulls are on feed at Hould Bull Development Center west of Malta, MT and available for you to view at any time. The bulls have been fed a high roughage ration to ensure soundness and longevity. All have been given Fusogard to help prevent footrot and tested negative for BVD-PI. Our sincere thanks goes to Bruce, Linda, Lance and their crew for the great care they give these bulls. They are great to work with and always accommodate everyone's schedules and deadlines. It gives us a great peace of mind knowing our bulls are in such great hands.

We are blessed to be surrounded by family and friends who support us. We could not do what we love to do without them. Sale time is one of our most favorite times of the year and it is truly a family affair. We enjoy catching up with friends and family on sale day and invite you to join us for lunch and stay for our “friends and family” social after the sale.

Our sincere thanks for your friendship and support throughout the years – we look forward to working with you for many years to come. Please feel free to call us if you would like additional information on the bulls or if you have any questions about our program. Please stop by and view the sale offering and join us for lunch on April 5th. See you then!

Jeff, Christie, Charley & Tyson Nissen

BIRTH WEIGHT & CALVING EASE

University studies in Wyoming and data from Montana and Colorado lend credence to the following conclusions:

1. The birth weight itself influences calving ease by 65%.
2. The female has 60-70% influence on birth weight of her calf.
3. The bull has 30-40% influence on birth weight of his progeny.
4. Pelvic measurement and angle as well as the shape of the calf have 35-40% influence on calving ease.
5. Length of gestation greatly affects birth weight. A fetus can gain over one pound per day in the last days of gestation.
6. Weather and temperature the last 30 days affect the length of gestation.
7. Size and maturity of the cow influence calving ease.

Most commercial producers do not take birth weights. Guessing is as inaccurate as driving with a broken speedometer – what's thought to be 55 mph may in fact be 65 or 70 mpg, and what's thought to be 70-80 lb. may actually be 80-90 lb. Remember, everything is relevant. Increased growth, frame and performance will increase BW. A longer-bodied calf will weigh more. If a calf is expected to have genetics for growth, it will display this prior to birth as well as after. As a rule of thumb, it takes a calf weighing 85 lb. at birth to finish at 1200-1250 lb. A cow should easily give birth to a calf weighing 8% of her own body weight. Thus, a 1200 lb. cow should give birth to a 96 lb. calf with ease.

Continued selection for light birth weights will ultimately reduce the mature sizes and performance of your cattle.

The statement above has been published countless times in numerous catalogs and publications and we feel it does a great job illustrating the whole picture in regards to birthweight and calving ease.

While birth weight is always something to take into consideration, we feel that calving ease should be utilized just as much when selecting a bull. Those higher birthweight calves that calve easy and unassisted, thrive from the start and are at the top of the pack come weaning time.

Those are the ones that bring you the most bang for your buck when you are getting paid by the pound.

ONLINE & PHONE BIDDING OPTIONS



Can't make it sale day? We've got you covered! We know how hard it can be this time of year to get away from the place to make it to town or how unexpected weather can throw a wrench into your plans last minute. We would love to see you at the sale, but want you to know we have the option of online bidding to give you the opportunity to purchase bulls at your convenience from just about anywhere!

Northern Livestock Video has an online desktop and mobile friendly bidding platform. They also have a phone bidding option if you are not comfortable bidding online and would like to be on the phone with a representative.

Online Bidding:

1. *Pre-Register at least one day prior to the sale.*
2. *Go to bid.northernlivestockvideo.com and click "Get Approved to Bid".*
3. *Doing this will prompt you to create an account, after which you will fill out a bidder approval application.*
4. *Once Approved, an email will be sent to the email account provided, please click the link in that email to activate your account and a buyer number will be provided.*
5. *On sale day (after approval), visit www.northernlivestockvideo.com to view and bid!*

Google Chrome is the preferred web browser for viewing Northern Livestock Video Sales

Please visit www.northernlivestockvideo.com for instructions on downloading and using the mobile bidding app.

For technical assistance with Internet Viewing and Bidding Questions, call Sam Fraser 406-860-0590.

Phone Bidding:

Anyone wanting to use the Northern Livestock phone bank to bid must pre-register and have a bid number to bid on the phone.

1. *To register with NLVA call 866-616-5035 Before Sale Day.*
2. *View the Online CATALOG and VIDEO CLIP of each BULL selling at www.northernlivestockvideo.com.*
3. *Bidders who are successful in making purchases will be contacted following the sale to make payment and delivery arrangements.*

Northern Livestock's Sale Day Bid Line: 1-406-245-0889.

Don't buy an imposter.

Not all "Angus" bulls are **REGISTERED** Angus bulls.



If you see this logo in conjunction with an individual animal or group of animals, you know that that animal is registered with the American Angus Association and backed by the power of **data, programs and pedigrees** of the Association.

Invest wisely in those that carry the **Powered By Angus** logo.

Look for the **REGISTRATION NUMBER**.

For more information on the Powered By Angus program, visit:
Angus.org/PBA.



American Angus Association Selection Tools

Expected Progeny Difference (EPD), is the prediction of how future progeny of each animal are expected to perform relative to the progeny of other animals listed in the database. EPDs are expressed in units of measure for the trait, plus or minus. Interim EPDs may appear on young animals when their performance has yet to be incorporated into the American Angus Association National Cattle Evaluation (NCE) procedures. This EPD will be preceded by an "I", and may or may not include the animal's own performance record for a particular trait, depending on its availability, appropriate contemporary grouping, or data edits needed for NCE.

Accuracy (ACC), is the reliability that can be placed on the EPD. An accuracy of close to 1.0 indicates higher reliability. Accuracy is impacted by the number of progeny and ancestral records included in the analysis.

Calving Ease Direct (CED), is expressed as a difference in percentage of unassisted births, with a higher value indicating greater calving ease in first-calf heifers. It predicts the average difference in ease with which a sire's calves will be born when he is bred to first-calf heifers.

Birth Weight (BW), expressed in pounds, is a predictor of a sire's ability to transmit birth weight to his progeny compared to that of other sires.

Weaning Weight (WW), expressed in pounds, is a predictor of a sire's ability to transmit weaning growth to his progeny compared to that of other sires.

Residual Average Daily Gain (RADG), feed efficiency expressed in pounds per day, is a predictor of a sire's genetic ability for postweaning gain in future progeny compared to that of other sires, given a constant amount of feed consumed.

Yearling Weight (YW), expressed in pounds, is a predictor of a sire's ability to transmit yearling growth to his progeny compared to that of other sires.

Yearling Height (YH), is a predictor of a sire's ability to transmit yearling height, expressed in inches, compared to the that of other sires.

Scrotal Circumference (SC), expressed in centimeters, is a predictor of the difference in transmitting ability for scrotal size compared to that of other sires.

Docility (DOC), is expressed as a difference in yearling cattle temperament, with a higher value indicating more favorable docility in a sire's offspring compared to another sire.

MATERNAL

Heifer Pregnancy (HP), is a selection tool to increase the probability or chance of a sire's daughters becoming pregnant as first-calf heifers during a normal breeding season. A higher EPD is the more favorable direction, and the EPD is reported in percentage units.

Calving Ease Maternal (CEM), is expressed as a difference in percentage of unassisted births, with a higher value indicating greater calving ease in first-calf daughters. It predicts the average ease with which a sire's daughters will calve as first-calf heifers when compared to daughters of other sires.

Maternal Milk (Milk), is a predictor of a sire's genetic merit for milk and mothering ability in his daughters compared to daughters of other sires. In other words, it is that part of a calf's weaning weight attributed to milk and mothering ability.

Mature Weight (MW), expressed in pounds, is a predictor of the difference in mature weight of daughters of a sire compared to the daughters of other sires.

Mature Height (MH), expressed in inches, is a predictor of the difference in mature height of a sire's daughters compared to daughters of other sires.

FOOT SCORE

Claw Set (Claw), is expressed in units of claw-set score. A lower EPD is more favorable, indicating a sire will produce progeny with more ideal claw set, which is toes that are symmetrical, even and appropriately spaced.

Foot Angle (Angle), is expressed in units of foot-angle score. A lower EPD is more favorable, indicating a sire will produce progeny with more ideal foot angle, which is a 45-degree angle at the pastern joint with appropriate toe length and heel depth.

CARCASS

The genetic evaluation produces a single set of EPDs for carcass traits where the units of measure are in trait format and analyzed on an age-constant basis.

Carcass Weight (CW), expressed in pounds, is a predictor of the differences in hot carcass weight of a sire's progeny compared to progeny of other sires.

Marbling (Marb), is expressed as a fraction of the difference in USDA marbling score of a sire's progeny compared to progeny of other sires.

Ribeye Area (RE), expressed in square inches, is a predictor of the difference in ribeye area of a sire's progeny compared to progeny of other sires.

Fat Thickness (Fat), expressed in inches, is a predictor of the differences in external fat thickness at the 12th rib (as measured between the 12th and 13th ribs) of a sire's progeny compared to progeny of other sires.

\$VALUE INDEXES

\$Value Indexes, reported in dollars per head, are multi-trait selection indexes where a higher value suggests more profit. The \$Value is an estimate of how future progeny of each sire are expected to perform, on average, compared to progeny of other sires if sires were randomly mated to cows and if calves were exposed to the same environment.

Maternal Weaned Calf Value (\$M), expressed in dollars per head, predicts profitability differences in progeny due to genetics from conception to weaning. Increased selection pressure on \$M aims to decrease overall mature cow size and improve foot structure and fertility while maintaining weaning weights consistent with today's production.

Weaned Calf Value (\$W), expressed in dollars per head, provides the expected difference in future progeny preweaning performance from birth to weaning. Increased selection pressure on \$W increases weaning and maternal milk traits while increasing mature cow size.

Cow Energy Value (\$EN), expressed in dollars savings per cow per year, assesses differences in cow energy requirements as an expected dollar savings difference in daughters of sires. A larger value is more favorable when comparing two animals. Components for computing \$EN savings difference include lactation energy requirements and energy costs associated with differences in mature cow size.

Feedlot Value (\$F), expressed in dollars per head, is the expected average difference in future progeny performance for postweaning merit compared to progeny of other sires. The underlying objective assumes commercial producers will retain ownership of cattle through the feedlot phase and sell fed cattle on a carcass weight basis with no considerations of premiums or discounts for quality and yield grade.

Grid Value (\$G), expressed in dollars per carcass, is the expected average difference in future progeny performance for carcass grid merit, including quality and yield grade attributes, compared to progeny of other sires.

Beef Value (\$B), expressed in dollars per carcass, represents the expected average differences in the progeny postweaning performance and carcass value compared to progeny of other sires. This index assumes commercial producers wean all male and female progeny, retain ownership of these animals through the feedlot phase, and market these animals on a quality-based carcass grid.

Reference Sires

SITZ RESILIENT 10208

19057457 • 2/15/2018

Mohnen Substantial 272#
Sitz Stellar 726D
 Sitz Pride 200B

Sitz Top Game 561X#
Sitz Miss Burgess 1856
 Sitz Miss Burgess 4381

Benfield Substance 8506#
 Mohnen Glyn Mawr Elba 1758

Connealy Final Product#
 Sitz Pride 308Y#

GDAR Game Day 449#
 Sitz Pride 88T#

Sitz Rainmaker 10899
 Sitz Miss Burgess 1609



CED	BW	WW	YW	Milk	SC
+9	+0.3	+75	+135	+21	+1.04

CW	Marb	RE	Fat	\$M	\$W	\$F	\$B
+46	+.87	+.74	+.002	+88	+66	+82	+148



Resilient was the high selling bull at the Sitz Angus Ranch 2019 Fall Bull Sale for \$165,000! He brings maternal power in a deep bodied, wide based package. This sale represents our second calf crop from Resilient. They are attractive and both bulls and females have performed well. We calved out daughters this year. They are moderate, deep bodied females with adequate milk, good feet and sound structure.

LD CAPITALIST 316

+17666102 • 1/26/2013

S A V Final Answer 0035#
Connealy Capitalist 028#
 Prides Pita of Conanga 8821

C A Future Direction 5321#
LD Dixie Erica 2053
 LD Dixie Erica Oar 0853

Sitz Traveler 8180#
 S A V Emulous 8145

C R A Bextor 872 5205 608#
 Prides Trav of Conanga 6499

G A R Precision 1680#
 C A Miss Power Fix 308

LD Royce Onaroll 810
 Dixie Erica of R R 8553

CED	BW	WW	YW	Milk	SC
+12	-0.6	+65	+112	+25	+.44

CW	Marb	RE	Fat	\$M	\$W	\$F	\$B
+53	+.69	+.61	+.057	+68	+78	+100	+151



Capitalist is a calving ease sire that transmits exceptional growth to his offspring. The offspring have lots of performance and style. Look for Capitalist to improve structure and foot quality. We were very impressed with his first calf crop and used him again this past AI season. We are excited to see how the females develop and mature.

MUSGRAVE 316 EXCLUSIVE

18130471 • 2/6/2015

Connealy Capitalist 028#
LD Capitalist 316#
 LD Dixie Erica 2053

Musgrave Foundation#
Musgrave Prim Lassie 163-386
 SCR Prim Lassie 80634#

S A V Final Answer 0035#
 Prides Pita of Conanga 8821

C A Future Direction 5321#
 LD Dixie Erica Oar 0853

Kesslers Frontman R001#
 MCATL Blackcap Juara 29-434

TC Boom Time 434
 SCR Prim Lassie 60781



CED	BW	WW	YW	Milk	SC
+8	+0.8	+67	+120	+28	+1.10

CW	Marb	RE	Fat	\$M	\$W	\$F	\$B
+52	+.84	+.73	+.050	+82	+67	+100	+160



We utilized Exclusive to tie in uniformity with LD Capitalist himself. We liked his look - deep body, powerful phenotype and structural correctness. We were impressed with his individual performance and we have been pleased with his offspring - he throws calves that catch your eye and have the "keeper" look. A sound carcass bull as well, he checked all the boxes for us.

MUSGRAVE 316 STUNNER

18467508 • 2/19/2016

S A V Final Answer 0035#
Connealy Capitalist 028#
Prides Pita of Conanga 8821

LD Capitalist 316

C A Future Direction 5321#
LD Dixie Erica 2053
LD Dixie Erica Oar 0853#

MCATL Blackbird 831-1378#

Connealy Final Product#
MCATL Pure Product 903-55#
M A Esta 55-252
Connealy Reflection#
MCATL Blackbird 1378-573
MA Blackbird 573

CED	BW	WW	YW	Milk	SC	CW	Marb	RE	Fat	\$M	\$W	\$F	\$B
+6	+0.2	+69	+116	+35	+1.28	+61	+94	+58	+0.91	+49	+81	+105	+164



Stunner is a phenotypic standout. He is an extremely stylish profiling bull that is well balanced and deep sided with a bold spring of rib. Look for Stunner to moderate frame size.

SAV ELATION 7899

+18911198 • 12/26/2016

Emulation N Bar 5522#
N Bar Emulation EXT#
N Bar Primrose 2424

Sinclair Emulation XXP#

N Bar Emulation EXT#
N Bar Primrose Y3051#
N Bar Primrose 2429#

S A V Blackcap May 1782

R R Rito 707#
Rito 707 of Ideal 3407 7075
Ideal 3407 of 1418 076
S A F Bando 5175#
S A V May 2397#
S A V May 7238

CED	BW	WW	YW	Milk	SC	CW	Marb	RE	Fat	\$M	\$W	\$F	\$B
-2	+2.3	+69	+116	+13	-.38	+57	+60	+23	+0.029	+29	+47	+96	+140



We chose Elation to bring back some older genetics that are known for fertility, longevity, quality udders and structural soundness. His daughters have good dispositions and plenty of milk. They are long, deep bodied cattle with more than adequate muscle in their hind quarter.

SQUARE B MILESTONE

+19167792 • 9/2/2017

Rito 707 of Ideal 3407 7075
S A V Registry 2831#
S A V Madame Pride 0075

S A V Sensation 5615

S A V 8180 Traveler 004#
S A V Blackcap May 4136
S A V May 2397#

Eura Elga of Conanga 9109#

G A R Grid Maker#
S A V Bismarck 5682#
S A V Abigale 0451
Connealy Black Baron of SCAR
Eura Cal of Conanga 56B
Elgina of Conanga 868 232

CED	BW	WW	YW	Milk	SC	CW	Marb	RE	Fat	\$M	\$W	\$F	\$B
+9	-1.5	+50	+84	+24	+1.38	+36	-.13	+55	+0.020	+49	+51	+78	+93



The Milestone calves come easy and unassisted with tons of vigor. Milestone is moderate framed with a clean front, wide top and big, square hip. We calved his first daughters this spring - they are moderate framed with plenty of milk and calm dispositions.

LARSEN STELLAR W14

19729194 • 2/4/2020

CED	BW	WW	YW	Milk	SC	CW	Marb	RE	Fat	\$M	\$W	\$F	\$B
+6	+0	+77	+140	+35	+0.85	+65	+75	+37	+0.073	+58	+79	+101	+150

We purchased this Stellar son from Larsen Ranch Angus in Forsyth, MT. This is the first offering of his sons.

Mohnen Substantial 272#
Sitz Stellar 726D
Sitz Pride 200B

Larsen Right Answer 211R
Larsen Merle 215U#
Larsen Merle 2895

SPRUCE HILL FINNEGAN 9493

19827549 • 5/8/2019

CED	BW	WW	YW	Milk	SC	CW	Marb	RE	Fat	\$M	\$W	\$F	\$B
+5	+1.5	+79	+153	+28	+1.36	+61	+97	+84	+0.028	+100	+75	+107	+176

Our selection from Spruce Hill Ranch in South Dakota. Due to the selling cows because of the drought, we only retained a small group of cows that had calves at their side sired by Finnegan. We look forward to more of his offspring in the years to come.



Connealy Niobrara 5451
Connealy Finnegan
Black Ceyla of Conanga 0267

Hilltop Advance 4245
Spruce Hill 502 Rito 6304
Spruce Hill 502 Miss Rito 434



The Targeting the Brand™ logo is designed to highlight registered Angus bulls with greater genetic potential to produce calves meeting the most challenging specifications of the Certified Angus Beef® brand. Bulls must meet genetic requirements of +0.65 Marbling EPD and +55 Dollar Grid (\$G) to qualify for use of the Targeting the Brand™ logo.

Lot 1



NA RESILIENT 247

DOB: 1/27/2022 • Reg: 20594640 • Tattoo: 247



Sitz Stellar 726D

Mohnen Substantial 272#
SITZ Pride 200B

Sitz Resilient 10208

Sitz Miss Burgess 1856

Sitz Top Game 561X#
Sitz Miss Burgess 4381

Hilltop Final Option 5297

Carter Final Option 201#
Hilltop Shoshone 273#

NA Lovemere 8106

NA Miss Queen JCN 512

N B C
NA Miss Queen JCN 378



Act BW	Act WW	Adj 205	Adj 365	%IMF	%IMF Ratio	REA	REA Ratio					
82	806	704	1408	6.7	100	12.4	106					
Dam's Production		3 - 104		Rib Fat	0.27	Rump Fat	0.33					
CED	BW	WW	YW	Milk	SC	Marb	RE	Fat	\$M	\$W	\$F	\$B
+6	-0.5	+76	+125	+19	+1.03	+0.89	+0.55	+0.045	+68	+72	+70	+130

- Suitable for use on large heifers
- 3/4 brother to Lot 4
- Individual Performance: WR@117, YR@116
- Scrotal: 38



Hilltop Final Option 5297

Herd Sire Prospect!!

This guy has been catching our eye for the past year. He has a powerful phenotype and the carcass merit to back it up.

His dam, NA Lovemere 8106, is a solid producer that has caught AI every year.

Lot 1's maternal sire, Hilltop Final Option 5297 was a bull we purchased from Hilltop Angus in Denton, MT. He was a long spined, deep ribbed bull who left us with a solid set of females. His full bodied daughters stand on good feet, have good udders and good maternal instinct.

Lot 2



2 NA RESILIENT 252

DOB: 1/28/2022 • Reg: 20594637 • Tattoo: 252

Sitz Stellar 726D

Mohnen Substantial 272#
SITZ Pride 200B

Sitz Resilient 10208

Sitz Miss Burgess 1856

Sitz Top Game 561X#
Sitz Miss Burgess 4381

Hilltop Final Option 5350

Carter Final Option 201#
Hilltop Blackbird GP 09#

NA Blackbird 8133

NA Blackbird 417

Sitz JLS Game Day 9630#
Vermilion Blackbird 2616



Act BW	Act WW	Adj 205	Adj 365	%IMF	%IMF Ratio	REA	REA Ratio					
94	744	655	1337	5.7	125	10.6	90					
Dam's Production		2 - 107		Rib Fat	0.26	Rump Fat	0.27					
CED	BW	WW	YW	Milk	SC	Marb	RE	Fat	\$M	\$W	\$F	\$B
+3	+2.5	+85	+143	+25	-0.19	+0.79	+0.57	+0.02	+55	+76	+91	+150

- Cow bull
- 3/4 brother to Lot 3
- Individual Performance: WR@109, YR@110
- Scrotal: 33



Sitz Resilient 10208



Sitz Miss Burgess 1856 - Dam of Sitz Resilient 10208

High %IMF bull!

If you like the ones that have the look, check out this guy! Lot 2 has length, stands on good feet and travels out strong and smooth. His dam is a Final Option daughter that is a top producer for us.



Lot 3



3 NA RESILIENT 202

DOB: 1/20/2022 • Reg: 20594641 • Tattoo: 202



Sitz Stellar 726D
Sitz Resilient 10208
 Sitz Miss Burgess 1856
 Hilltop Final Option 5350
NA Anna 716E
 NA Miss Anna 211Z#

Mohnen Substantial 272#
 SITZ Pride 200B
 Sitz Top Game 561X#
 Sitz Miss Burgess 4381
 Carter Final Option 201#
 Hilltop Blackbird GP 09#
 Sitz Onward 9007
 NA Miss Frontier Anna 5533

Act BW	Act WW	Adj 205	Adj 365	%IMF	%IMF Ratio	REA	REA Ratio					
95	754	656	1312	4.64	101	10.5	88					
Dam's Production		3 - 107		Rib Fat	0.38	Rump Fat	0.39					
CED	BW	WW	YW	Milk	SC	Marb	RE	Fat	\$M	\$W	\$F	\$B
-1	+3.9	+88	+150	+24	+1.36	+0.57	+0.5	+0.02	+63	+70	+97	+144

- Cow bull
- 3/4 brother to Lot 2
- Individual Performance: WR@109, YR@108
- Scrotal: 38
- Dam is one of our top producing cows



Teach your children to work for the things that they want or they will never appreciate what they have - they will always expect everything to be given to them

Nissen Angus

4 NA RESILIENT 272

DOB: 2/1/2022 • Reg: 20594639 • Tattoo: 272



Sitz Stellar 726D
Sitz Resilient 10208
 Sitz Miss Burgess 1856
 Hilltop Final Option 5297
NA Anna 978
 NA Miss Anna 255

Mohnen Substantial 272#
 SITZ Pride 200B
 Sitz Top Game 561X#
 Sitz Miss Burgess 4381
 Carter Final Option 201#
 Hilltop Shoshone 273#
 KG Wisdom 9366
 NA Miss Anna 9932

Act BW	Act WW	Adj 205	Adj 365	%IMF	%IMF Ratio	REA	REA Ratio					
92	716	657	1294	6.41	141	10	87					
Dam's Production		1 - 109		Rib Fat	0.29	Rump Fat	0.38					
CED	BW	WW	YW	Milk	SC	Marb	RE	Fat	\$M	\$W	\$F	\$B
-4	+3.5	+82	+142	+20	+0.38	+0.88	+0.49	+0.32	+49	+64	+88	+149

- Cow bull
- 3/4 brother to Lot 1
- Individual Performance: WR@109, YR@106
- Scrotal: 33.5
- High %IMF bull at 6.41 and a 141 ratio!



Lot 4

5

NA RESILIENT 296

DOB: 2/6/2022 • Reg: 20594648 • Tattoo: 296



Sitz Stellar 726D

Mohnen Substantial 272#
SITZ Pride 200B

Sitz Resilient 10208

Sitz Miss Burgess 1856

Sitz Top Game 561X#
Sitz Miss Burgess 4381

S Chisum 255#

S Chisum 6175#
S Blossom 0278#

NA Eileen Lass 730#

NA Eileen Lass 406

A A R Hilger 1110
JF Eileen Lass U34

Act BW	Act WW	Adj 205	Adj 365	%IMF	%IMF Ratio	REA	REA Ratio					
82	816	710	1276	3.98	87	12.2	106					
Dam's Production				4 - 110	Rib Fat	0.22	Rump Fat	0.23				
CED	BW	WW	YW	Milk	SC	Marb	RE	Fat	\$M	\$W	\$F	\$B
+7	+1.8	+71	+111	+18	+0.14	+0.1	+0.74	+0.15	+83	+64	+92	+120

- Suitable for use on larger heifers
- Individual Performance: WR@118, YR@105
- Scrotal: 34.5
- Pathfinder dam is a top performer with 4@110



Lot 5



6

NA FINAL OPTION 285

DOB: 2/3/2022 • Reg: 20592810 • Tattoo: 285



Carter Final Option 201#

Connealy Final Product#
Carter Lacey 2189#

Hilltop Final Option 5297

Hilltop Shoshone 273#

Lyons Santa Fe 6119
Hilltop Shoshone 69

Sitz Onward 9007

Connealy Onward#
Sitz Barbara Perfection 1823

NA Miss Cinda 1123

NA Miss Cinda 4114 YR#

H S A F Traveler 8180-504C
Miss Cinda 723



NA Miss Cinda 1123 - Dam of Lot 6

Act BW	Act WW	Adj 205	Adj 365	%IMF	%IMF Ratio	REA	REA Ratio					
75	770	734	1281	3.54	77	12.6	113					
Dam's Production				9 - 106	Rib Fat	0.18	Rump Fat	0.26				
CED	BW	WW	YW	Milk	SC	Marb	RE	Fat	\$M	\$W	\$F	\$B
+10	-0.4	+53	+93	+27	-0.11	+0.23	+0.92	+0.39	+62	+59	+69	+110

- This bull's numbers indicate he is a heifer bull - we do want to make note that he was a twin with a heifer
- Individual Performance: WR@122, YR@105
- Scrotal: 34.5
- Longevity runs in the family - he is out of a 12 year old cow



Lot 6



Lot 7



7 NA CAPITALIST 2120

DOB: 2/13/2022 • Reg: 20592815 • Tattoo: 2120



Connealy Capitalist 028#
LD Capitalist 316#
LD Dixie Erica 2053

S A V Final Answer 0035#
Prides Pita of Conanga 8821
C A Future Direction 5321#
LD Dixie Erica Oar 0853

McD SF Waylon 4550

Baldrige Waylon W34#
SF Forevre Lady 6200

NA Susie 6118

NA Susie 3114#

GDAR CJD Alliance 0714#
Corey A Susie 9977



Act BW	Act WW	Adj 205	Adj 365	%IMF	%IMF Ratio	REA	REA Ratio					
78	726	641	1297	4.38	97	13.3	118					
Dam's Production		5 - 102		Rib Fat	0.25	Rump Fat	0.32					
CED	BW	WW	YW	Milk	SC	Marb	RE	Fat	\$M	\$W	\$F	\$B
+17	-2.8	+49	+86	+29	+0.82	+0.97	+0.7	+.027	+71	+61	+75	+147

- HEIFER BULL
- Individual Performance: WR@106, YR@106
- Scrotal: 37
- Carcass power



NA Susie 6118 - Dam of Lot 7

“Because when you stop and look around, this life is pretty amazing”

- Dr. Seuss



Lot 8

8 NA CAPITALIST 2116

DOB: 2/10/2022 • Reg: 20592814 • Tattoo: 2116



Connealy Capitalist 028#
LD Capitalist 316#
LD Dixie Erica 2053

S A V Final Answer 0035#
Prides Pita of Conanga 8821

C A Future Direction 5321#
LD Dixie Erica Oar 0853

S A V Ten Speed 3022#

A A R Ten X 7008 S A#
S A V Madame Pride 1134#

NA Blackcap 501C

SD Blackcap 86178

S A V Homesteader 7282
SD Blackcap 980



Act BW	Act WW	Adj 205	Adj 365	%IMF	%IMF Ratio	REA	REA Ratio					
87	730	642	1231	4.43	98	13.9	122					
Dam's Production		5 - 102		Rib Fat	0.45	Rump Fat	0.39					
CED	BW	WW	YW	Milk	SC	Marb	RE	Fat	\$M	\$W	\$F	\$B
+10	-0.2	+51	+89	+27	-0.08	+0.6	+0.47	+0.056	+66	+57	+61	+106

- HEIFER BULL
- Individual Performance: WR@107, YR@101
- Scrotal: 34.5
- Carcass power!

9 NA CAPITALIST 260

DOB: 1/29/2022 • Reg: 20592808 • Tattoo: 260



Connealy Capitalist 028#
LD Capitalist 316#
LD Dixie Erica 2053

S A V Final Answer 0035#
Prides Pita of Conanga 8821

C A Future Direction 5321#
LD Dixie Erica Oar 0853

NA Aberdeen JCN 110

TC Aberdeen 759#
Basin Pride 9245

NA Miss Doll 323A

NA Miss Anna JN 7779

BT Lead ON 12R
NA Miss Sana Anna 2219 of JN



Act BW	Act WW	Adj 205	Adj 365	%IMF	%IMF Ratio	REA	REA Ratio					
88	732	630	1217	5.4	118	12.2	105					
Dam's Production		7 - 106		Rib Fat	0.35	Rump Fat	0.38					
CED	BW	WW	YW	Milk	SC	Marb	RE	Fat	\$M	\$W	\$F	\$B
+2	+2.0	+60	+103	+19	+0.53	+0.78	+0.61	+0.042	+67	+51	+90	+146

- Cow bull
- Individual Performance: WR@105, YR@100
- Scrotal: 37.5
- Powerful producing dam - posts 7@106
- Check out the high %IMF and REA numbers!



10 NA CAPITALIST 2141

DOB: 2/22/2022 • Reg: 20592818 • Tattoo: 2141



Connealy Capitalist 028#
LD Capitalist 316#
LD Dixie Erica 2053

S A V Final Answer 0035#
Prides Pita of Conanga 8821

C A Future Direction 5321#
LD Dixie Erica Oar 0853

S A V Recharge 3436#

Rito 707 of Ideal 3407 7075
S A V Blackcap May 4136

NA Miss Cinda 652

NA Miss Cinda 1123

Sitz Onward 9007
NA Miss Cinda 4114 YR#



Act BW	Act WW	Adj 205	Adj 365	%IMF	%IMF Ratio	REA	REA Ratio					
98	696	629	1261	3.39	76	11.5	104					
Dam's Production		5 - 103		Rib Fat	0.2	Rump Fat	0.25					
CED	BW	WW	YW	Milk	SC	Marb	RE	Fat	\$M	\$W	\$F	\$B
+11	+0.9	+73	+131	+27	+1.2	+0.41	+0.63	-.007	+37	+68	+94	+137

- Cow bull
- Individual Performance: WR@104, YR@103
- Scrotal: 36



Lot 9

NA Miss Doll 323A - Dam of Lot 9



Lot 11



11

NA EXCLUSIVE 229

DOB: 1/26/2022 • Reg: 20598283 • Tattoo: 229

LD Capitalist 316#

Musgrave 316 Exclusive

Musgrave Prim Lassie 163-386

GDAR Leupold 298#

NA Posey Star 623

Corey A Posey Star 605S

Connealy Capitalist 028#

LD Dixie Erica 2053

Musgrave Foundation#

SCR Prim Lassie 80634#

A A R Leupold 0578#

GDAR Miss Blackcap 9232

B/R New Frontier 095#

Ms Battalion Star Bright



Act BW	Act WW	Adj 205	Adj 365	%IMF	%IMF Ratio	REA	REA Ratio					
81	740	633	1222	5.72	125	11.6	99					
Dam's Production				5 - 103	Rib Fat	0.36	Rump Fat	0.3				
CED	BW	WW	YW	Milk	SC	Marb	RE	Fat	\$M	\$W	\$F	\$B
+13	-1.7	+54	+95	+31	+1.46	+1.15	+0.41	+0.04	+67	+64	+80	+151

- HEIFER BULL
- Individual Performance: WR@105, YR@100
- Scrotal: 37
- High %IMF bull



Lot 12

12

NA EXCLUSIVE 284

DOB: 2/3/2022 • Reg: 20598373 • Tattoo: 284

LD Capitalist 316#

Musgrave 316 Exclusive

Musgrave Prim Lassie 163-386

TC Aberdeen 759#

NA Miss QV Time 234

NA Miss QV Time 215

Connealy Capitalist 028#

LD Dixie Erica 2053

Musgrave Foundation#

SCR Prim Lassie 80634#

C R A Bextor 872 5205 608#

TC Blackbird 4034#

Tomwall G Prime Time 8284

MS Empress QV HCF



Act BW	Act WW	Adj 205	Adj 365	%IMF	%IMF Ratio	REA	REA Ratio					
78	682	613	1301	4.67	102	11.2	98					
Dam's Production				9 - 99	Rib Fat	0.33	Rump Fat	0.46				
CED	BW	WW	YW	Milk	SC	Marb	RE	Fat	\$M	\$W	\$F	\$B
+5	+1.1	+65	+122	+31	+1.48	+0.77	+0.42	+0.072	+69	+64	+101	+152

- HEIFER BULL
- Individual Performance: WR@102, YR@107
- Scrotal: 38

13

NA EXCLUSIVE 2106

DOB: 2/7/2022 • Reg: 20598371 • Tattoo: 2106

LD Capitalist 316#

Musgrave 316 Exclusive

Musgrave Prim Lassie 163-386

GDAR CJD Alliance 0714#

NA Lady 504C

NA Miss Image Time 718

Connealy Capitalist 028#

LD Dixie Erica 2053

Musgrave Foundation#

SCR Prim Lassie 80634#

Sitz Alliance 7487

GDAR CJD Kem 8602

H A Image Maker 0415#

NA Miss Frontier Time 515



Act BW	Act WW	Adj 205	Adj 365	%IMF	%IMF Ratio	REA	REA Ratio					
83	704	615	1269	4.07	90	11.4	100					
Dam's Production				5 - 98	Rib Fat	0.31	Rump Fat	0.32				
CED	BW	WW	YW	Milk	SC	Marb	RE	Fat	\$M	\$W	\$F	\$B
+3	+1.3	+60	+105	+44	+1.56	+0.24	+0.68	+0.009	+70	+76	+82	+116

- Suitable for use on larger heifers
- Individual Performance: WR@102, YR@104
- Scrotal: 37.5



14 NA ELATION 258

DOB: 1/29/2022 • Reg: 20592807 • Tattoo: 258



Sinclair Emulation XXP#
S A V Elation 7899
 S A V Blackcap May 1782

N Bar Emulation EXT#
 N Bar Primrose Y3051#
 Rito 707 of Ideal 3407 7075
 S A V May 2397#

GDAR CJD Alliance 0714#

Sitz Alliance 7487
 GDAR CJD Kem 8602

NA Miss Sana 356

NA Miss Sana 035

S A V Final Answer 0035#
 NA Miss Sana Design 323 589



Lot 14

Act BW	Act WW	Adj 205	Adj 365	%IMF	%IMF Ratio	REA	REA Ratio					
92	778	669	1360	3.77	82	12.3	106					
Dam's Production		8 - 101		Rib Fat	0.25	Rump Fat	0.25					
CED	BW	WW	YW	Milk	SC	Marb	RE	Fat	\$M	\$W	\$F	\$B
+5	+2.0	+77	+140	+29	+0.15	+0.45	+0.55	+0.11	+57	+71	+112	+155



- Cow bull
- 3/4 brother to Lot 15
- 7/8 brother to Lot 16
- Individual Performance: WR@111, YR@112
- Scrotal: 35.5

15 NA ELATION 2104 CA

DOB: 2/7/2022 • Reg: 20598169 • Tattoo: 2104



Sinclair Emulation XXP#
S A V Elation 7899
 S A V Blackcap May 1782

N Bar Emulation EXT#
 N Bar Primrose Y3051#
 Rito 707 of Ideal 3407 7075
 S A V May 2397#

GDAR CJD Alliance 0714#

Sitz Alliance 7487
 GDAR CJD Kem 8602

CoreyA Everelda Entense 509C

CoreyA Everelda Entense 7727#

H A Power Alliance 1025#
 CoreyA Everelda Entense 5513#



Lot 15

Act BW	Act WW	Adj 205	Adj 365	%IMF	%IMF Ratio	REA	REA Ratio					
96	804	703	1250	3.49	77	11.8	104					
Dam's Production		4 - 106		Rib Fat	0.24	Rump Fat	0.23					
CED	BW	WW	YW	Milk	SC	Marb	RE	Fat	\$M	\$W	\$F	\$B
+4	+2.7	+64	+109	+18	-0.02	+0.25	+0.57	+0.23	+64	+53	+87	+120



- Cow bull
- 3/4 brother to Lots 14 and 16
- Individual Performance: WR@117, YR@103
- Scrotal: 33.5

16 NA ELATION 268

DOB: 1/31/2022 • Reg: 20592809 • Tattoo: 268



Sinclair Emulation XXP#
S A V Elation 7899
 S A V Blackcap May 1782

N Bar Emulation EXT#
 N Bar Primrose Y3051#
 Rito 707 of Ideal 3407 7075
 S A V May 2397#

GDAR CJD Alliance 0714#

Sitz Alliance 7487
 GDAR CJD Kem 8602

NA Miss Georgina 242

NA Miss Georgina 930

S A V Final Answer 0035#
 NA Miss Lucky Georgina 740



Lot 16

Act BW	Act WW	Adj 205	Adj 365	%IMF	%IMF Ratio	REA	REA Ratio					
92	704	631	1348	3.85	84	11.5	100					
Dam's Production		8 - 101		Rib Fat	0.25	Rump Fat	0.34					
CED	BW	WW	YW	Milk	SC	Marb	RE	Fat	\$M	\$W	\$F	\$B
+7	-0.3	+63	+126	+28	-0.63	+0.42	+0.35	+0.54	+38	+57	+116	+151



- Cow bull
- 3/4 brother to Lot 15
- 7/8 brother to Lot 14
- Individual Performance: WR@105, YR@111
- Scrotal: 30.5





17 NA STUNNER 2126

DOB: 2/15/2022 • Reg: +20594578 • Tattoo: 2126

LD Capitalist 316#
Musgrave 316 Stunner
 MCATL Blackbird 831-1378#
 KG Wisdom 9366
NA Miss Anna JCN 161Y
 NA Miss Lucky Anna JCN 8872

Connealy Capitalist 028#
 LD Dixie Erica 2053
 MCATL Pure Product 903-55#
 MCATL Blackbird 1378-573
 Sitz Wisdom 481T#
 KG Lady Ann 6023
 Shamrocks Direction 006 E9P
 NA Miss Sana Anna 4225 JN#



Act BW	Act WW	Adj 205	Adj 365	%IMF	%IMF Ratio	REA	REA Ratio					
93	740	658	1349	5.05	100	12	100					
Dam's Production				6 - 109	Rib Fat	0.46	Rump Fat	0.47				
CED	BW	WW	YW	Milk	SC	Marb	RE	Fat	\$M	\$W	\$F	\$B
+7	+1.5	+61	+109	+31	+2.57	+0.98	+0.38	+0.1	+58	+65	+88	+146

- Cow bull
- ET calf
- Individual Performance: WR@100, YR@100
- Scrotal: 38.5
- Full flush brother to Lot 20
- Donor dam 161Y was flushed several times with great success!



18 NA STUNNER 2107

DOB: 2/7/2022 • Reg: 20594565 • Tattoo: 2107

LD Capitalist 316#
Musgrave 316 Stunner
 MCATL Blackbird 831-1378#
 Ellingson Homestead 6030
NA Empress 903
 NA Empress 712

Connealy Capitalist 028#
 LD Dixie Erica 2053
 MCATL Pure Product 903-55#
 MCATL Blackbird 1378-573
 CTS Remedy 1T01#
 EA Erica 1082
 S A V Recharge 3436#
 NA Miss QV Time 234



Act BW	Act WW	Adj 205	Adj 365	%IMF	%IMF Ratio	REA	REA Ratio					
75	704	651	1313	4.74	104	11.6	102					
Dam's Production				1 - 108	Rib Fat	0.25	Rump Fat	0.27				
CED	BW	WW	YW	Milk	SC	Marb	RE	Fat	\$M	\$W	\$F	\$B
+4	+0.3	+73	+128	+39	+1.21	+0.87	+0.66	+0.23	+57	+79	+113	+176

- HEIFER BULL
- Individual Performance: WR@108, YR@108
- Scrotal: 34.5



19 NA STUNNER 277

DOB: 2/2/2022 • Reg: 20594566 • Tattoo: 277

LD Capitalist 316#
Musgrave 316 Stunner
 MCATL Blackbird 831-1378#
 Hilltop Final Option 5297
NA Samantha 775
 NA Miss Samantha 559

Connealy Capitalist 028#
 LD Dixie Erica 2053
 MCATL Pure Product 903-55#
 MCATL Blackbird 1378-573
 Carter Final Option 201#
 Hilltop Shoshone 273#
 NA Consensus 7229 330
 NA Miss Samantha JCN 224Z



Act BW	Act WW	Adj 205	Adj 365	%IMF	%IMF Ratio	REA	REA Ratio					
81	694	601	1231	3.8	83	12	104					
Dam's Production				3 - 104	Rib Fat	0.36	Rump Fat	0.45				
CED	BW	WW	YW	Milk	SC	Marb	RE	Fat	\$M	\$W	\$F	\$B
+6	+0.8	+68	+111	+25	+1.49	+0.43	+0.45	+0.99	+57	+68	+80	+113

- HEIFER BULL
- Individual Performance: WR@100, YR@101
- Scrotal: 37.5



20

NA STUNNER 2123

DOB: 2/13/2022 • Reg: +20594575 • Tattoo: 2123



LD Capitalist 316#
Musgrave 316 Stunner
 MCATL Blackbird 831-1378#

Connealy Capitalist 028#
 LD Dixie Erica 2053

MCATL Pure Product 903-55#
 MCATL Blackbird 1378-573

KG Wisdom 9366
 Sitz Wisdom 481T#
 KG Lady Ann 6023

NA Miss Anna JCN 161Y
 NA Miss Lucky Anna JCN 8872
 Shamrocks Direction 006 E9P
 NA Miss Sana Anna 4225 JN#

Act BW	Act WW	Adj 205	Adj 365	%IMF	%IMF Ratio	REA	REA Ratio					
93	694	637	1184	4.16	100	12	100					
Dam's Production		6 - 109		Rib Fat	0.34	Rump Fat	0.45					
CED	BW	WW	YW	Milk	SC	Marb	RE	Fat	\$M	\$W	\$F	\$B
+3	+1.5	+64	+102	+29	+1.81	+0.68	+0.44	+0.07	+65	+68	+99	+146

- Cow bull
- ET calf
- Individual Performance: WR@100, YR@100
- Scrotal: 33
- Full flush brother to Lot 17
- Donor dam 161Y was flushed several times with great success!



NA Miss Anna JCN 161Y - Donor Dam of Lots 17 & 20

21

NA CAPITALIST 241

DOB: 1/27/2022 • Reg: 20592804 • Tattoo: 241



LD Capitalist 316#
 LD Dixie Erica 2053

Connealy Capitalist 028#
 Prides Pita of Conanga 8821

C A Future Direction 5321#
 LD Dixie Erica Oar 0853

S Foundation 514#
 Vision Unanimous 1418#
 S Lady Ann 8384#

NA Longterm 825
 NA Longterm 6108#
 GDAR CJD Alliance 0714#
 Brusett Longterm Q748

Act BW	Act WW	Adj 205	Adj 365	%IMF	%IMF Ratio	REA	REA Ratio					
77	704	618	1266	5.12	112	9.4	80					
Dam's Production		3 - 104		Rib Fat	0.22	Rump Fat	0.32					
CED	BW	WW	YW	Milk	SC	Marb	RE	Fat	\$M	\$W	\$F	\$B
+9	+0.4	+66	+122	+30	+1.17	+0.59	+0.39	+0.21	+66	+69	+108	+154

- HEIFER BULL
- 3/4 brother to Lot 22
- Individual Performance: WR@103, YR@104
- Scrotal: 35
- High %IMF bull!



Lot 21

22

NA CAPITALIST 255

DOB: 1/28/2022 • Reg: 20592806 • Tattoo: 255



LD Capitalist 316#
 LD Dixie Erica 2053

Connealy Capitalist 028#
 Prides Pita of Conanga 8821

C A Future Direction 5321#
 LD Dixie Erica Oar 0853

S Foundation 514#
 Vision Unanimous 1418#
 S Lady Ann 8384#

NA Doll 9106
 NA Miss Doll 334A
 Sitz Onward 9007
 NA Miss Design Anna 645S

Act BW	Act WW	Adj 205	Adj 365	%IMF	%IMF Ratio	REA	REA Ratio					
82	664	608	1208	4.74	104	12.4	107					
Dam's Production		2 - 99		Rib Fat	0.29	Rump Fat	0.36					
CED	BW	WW	YW	Milk	SC	Marb	RE	Fat	\$M	\$W	\$F	\$B
+4	+2.8	+64	+112	+26	+0.76	+0.53	+0.73	+0.03	+68	+59	+85	+134

- Cow bull
- 3/4 brother to Lot 21
- Individual Performance: WR@101, YR@99
- Scrotal: 34
- Solid carcass package here!



Lot 22

23 NA CAPITALIST 243

DOB: 1/27/2022 • Reg: 20592805 • Tattoo: 243



Connealy Capitalist 028#
LD Capitalist 316#
 LD Dixie Erica 2053

S A V Registry 2831#

NA Susie 731
 NA Susie 3114#

S A V Final Answer 0035#
 Prides Pita of Conanga 8821

C A Future Direction 5321#
 LD Dixie Erica Oar 0853

Rito 707 of Ideal 3407 7075
 S A V Madame Pride 0075

GDAR CJD Alliance 0714#
 Corey A Susie 9977

Act BW	Act WW	Adj 205	Adj 365	%IMF	%IMF Ratio	REA	REA Ratio					
82	638	548	1118	4.9	107	10.9	93					
Dam's Production				4 - 95	Rib Fat	0.33	Rump Fat	0.36				
CED	BW	WW	YW	Milk	SC	Marb	RE	Fat	\$M	\$W	\$F	\$B
+9	-0.1	+69	+125	+28	+1.21	+0.45	+0.34	+0.078	+72	+72	+105	+139

- HEIFER BULL
- Individual Performance: WR@91, YR@92
- Scrotal: 37



26 NA RESILIENT 288

DOB: 2/4/2022 • Reg: 20594660 • Tattoo: 288



Sitz Stellar 726D

Sitz Resilient 10208
 Sitz Miss Burgess 1856

Sitz Onward 9007

NA Miss Maker JCN 210Z
 NA Miss Image Maker JN 5501

Mohnen Substantial 272#
 SITZ Pride 200B

Sitz Top Game 561X#
 Sitz Miss Burgess 4381

Connealy Onward#
 Sitz Barbara Perfection 1823

H A Image Maker 0415#
 NA Sana Anna 3229 of JN

Act BW	Act WW	Adj 205	Adj 365	%IMF	%IMF Ratio	REA	REA Ratio					
88	698	608	1200	3.52	77	11.7	103					
Dam's Production				5 - 103	Rib Fat	0.34	Rump Fat	0.34				
CED	BW	WW	YW	Milk	SC	Marb	RE	Fat	\$M	\$W	\$F	\$B
+5	+1.0	+69	+119	+18	+0.69	+0.37	+0.59	+0.011	+77	+61	+76	+115

- Cow bull
- Individual Performance: WR@101, YR@99
- Scrotal: 35.5
- 11 year old dam has had two sets of twins throughout her career



24 NA RESILIENT 2105

DOB: 2/7/2022 • Reg: 20594664 • Tattoo: 2105



Sitz Stellar 726D

Sitz Resilient 10208
 Sitz Miss Burgess 1856

NA Charge On 902

NA Miss Blackberry Rose 144Y
 NA Miss Blackberry Rose 3203

Mohnen Substantial 272#
 SITZ Pride 200B

Sitz Top Game 561X#
 Sitz Miss Burgess 4381

KG Onward 6345
 CoreyA Everelda Entense 5508

S A F Connection#
 Adams Blackberry Rose 911#

Act BW	Act WW	Adj 205	Adj 365	%IMF	%IMF Ratio	REA	REA Ratio					
78	756	681	1177	3.53	78	11.3	100					
Dam's Production				9 - 108	Rib Fat	0.23	Rump Fat	0.36				
CED	BW	WW	YW	Milk	SC	Marb	RE	Fat	\$M	\$W	\$F	\$B
+14	-2.0	+49	+85	+42	+1.16	+0.49	+0.22	+0.029	+83	+67	+65	+104

- HEIFER BULL
- Individual Performance: WR@113, YR@97
- Scrotal: 35
- Longevity bred in - dam is a 2011 model



Lot 26

25 NA RESILIENT 297

DOB: 2/6/2022 • Reg: 20594647 • Tattoo: 297



Sitz Stellar 726D

Sitz Resilient 10208
 Sitz Miss Burgess 1856

S A V Registry 2831#

NA Georgina 739#
 NA Miss Georgina 242

Mohnen Substantial 272#
 SITZ Pride 200B

Sitz Top Game 561X#
 Sitz Miss Burgess 4381

Rito 707 of Ideal 3407 7075
 S A V Madame Pride 0075

GDAR CJD Alliance 0714#
 NA Miss Georgina 930

Act BW	Act WW	Adj 205	Adj 365	%IMF	%IMF Ratio	REA	REA Ratio					
90	680	595	1254	2.61	57	12.8	111					
Dam's Production				4 - 104	Rib Fat	0.22	Rump Fat	0.23				
CED	BW	WW	YW	Milk	SC	Marb	RE	Fat	\$M	\$W	\$F	\$B
+7	+0.4	+63	+117	+24	+1.03	+0.19	+0.86	+0.002	+71	+59	+108	+143

- Cow bull
- Individual Performance: WR@99, YR@103
- Scrotal: 35.5



NA Miss Maker JCN 210Z - Dam of Lot 26

27 NA RESILIENT 2101

Lot 27

DOB: 2/7/2022 • Reg: 20594662 • Tattoo: 2101



Sitz Stellar 726D
Sitz Resilient 10208
 Sitz Miss Burgess 1856

Mohnen Substantial 272#
 SITZ Pride 200B
 Sitz Top Game 561X#
 Sitz Miss Burgess 4381

Connealy Consensus 7229#
NA Elsiemere 316
 NA Elsiemere 105

Connealy Consensus#
 Blue Lilly of Conanga 16
 TC Aberdeen 759#
 NA Elsiemere 903



Act BW	Act WW	Adj 205	Adj 365	%IMF	%IMF Ratio	REA	REA Ratio					
88	672	588	1202	5.74	126	10	89					
Dam's Production		7 - 104		Rib Fat	0.34	Rump Fat	0.39					
CED	BW	WW	YW	Milk	SC	Marb	RE	Fat	\$M	\$W	\$F	\$B
-4	+3.1	+71	+108	+19	+0.15	+0.7	+0.45	+.039	+82	+65	+62	+113

- Cow bull
- Individual Performance: WR@98, YR@99
- Scrotal: 34
- Maternal power - dam posts 7@104!
- High %IMF bull



28 NA EXCLUSIVE 245

Lot 28

DOB: 1/27/2022 • Reg: 20598224 • Tattoo: 245



LD Capitalist 316#
Musgrave 316 Exclusive
 Musgrave Prim Lassie 163-386

Connealy Capitalist 028#
 LD Dixie Erica 2053
 Musgrave Foundation#
 SCR Prim Lassie 80634#

Ellingson Drover 6034
NA Blackcap 842
 Brusett Blackcap Q755

CTS Remedy 1T01#
 EA Primrose 9155
 WAR Design 2504 878 9025
 Brusett Blackcap 343



Act BW	Act WW	Adj 205	Adj 365	%IMF	%IMF Ratio	REA	REA Ratio					
91	658	581	1307	5.31	116	12.4	105					
Dam's Production		3 - 100		Rib Fat	0.36	Rump Fat	0.39					
CED	BW	WW	YW	Milk	SC	Marb	RE	Fat	\$M	\$W	\$F	\$B
+4	+1.5	+76	+137	+16	+1.32	+0.83	+0.8	+.031	+56	+59	+107	+169

- Cow bull
- Individual Performance: WR@97, YR@108
- Scrotal: 37.5
- Carcass power along with phenotype!



29 NA EXCLUSIVE 270

DOB: 2/1/2022 • Reg: 20598225 • Tattoo: 270



LD Capitalist 316#

Connealy Capitalist 028#
LD Dixie Erica 2053

Musgrave 316 Exclusive

Musgrave Prim Lassie 163-386

Musgrave Foundation#
SCR Prim Lassie 80634#

Ellingson Drover 6034

CTS Remedy 1T01#
EA Primrose 9155

NA Queen 882

Vermilion Queen 2296

S John Wayne
Vermilion Queen 8090



Act BW	Act WW	Adj 205	Adj 365	%IMF	%IMF Ratio	REA	REA Ratio					
94	668	595	1193	5.55	122	10.1	87					
Dam's Production				3 - 98	Rib Fat	0.27	Rump Fat	0.34				
CED	BW	WW	YW	Milk	SC	Marb	RE	Fat	\$M	\$W	\$F	\$B
+6	+1.5	+63	+118	+28	+1.22	+0.92	+0.48	+0.044	+59	+61	+89	+150

- Cow bull
- Individual Performance: WR@99, YR@98
- Scrotal: 36.5
- High %IMF bull!



31 NA STELLAR 295

DOB: 2/6/2022 • Reg: 20592813 • Tattoo: 295



Sitz Stellar 726D

Mohnen Substantial 272#
SITZ Pride 200B

Larsen Stellar W14

Larsen Merle 215U#

Larsen Right Answer 211R
Larsen Merle 289S

Hilltop Final Option 5297

Carter Final Option 201#
Hilltop Shoshone 273#

NA Miss Cinda 0190

NA Miss Cinda 460

GDAR CJD Alliance 0714#
NA Miss Cinda 1123

Act BW	Act WW	Adj 205	Adj 365	%IMF	%IMF Ratio	REA	REA Ratio					
70	654	637	1253	3.7	81	10.5	93					
Dam's Production				1 - 106	Rib Fat	0.18	Rump Fat	0.25				
CED	BW	WW	YW	Milk	SC	Marb	RE	Fat	\$M	\$W	\$F	\$B
+8	-0.6	+58	+106	+32	+1.02	+0.44	+0.43	-0.01	+45	+60	+91	+133

- HEIFER BULL
- Individual Performance: WR@106, YR@103
- Scrotal: 34



30 NA EXCLUSIVE 299

DOB: 2/7/2022 • Reg: 20598368 • Tattoo: 299



LD Capitalist 316#

Connealy Capitalist 028#
LD Dixie Erica 2053

Musgrave 316 Exclusive

Musgrave Prim Lassie 163-386

Musgrave Foundation#
SCR Prim Lassie 80634#

NA Registry 521

S A V Registry 2831#
H A R B Ebony Erica 912

NA Miss Queen 7107

NA Miss Queen JCN 378

GDAR CJD Alliance 0714#
NA Miss Queen JCN 017

Act BW	Act WW	Adj 205	Adj 365	%IMF	%IMF Ratio	REA	REA Ratio					
91	648	568	1245	4.22	93	11.8	103					
Dam's Production				3 - 101	Rib Fat	0.33	Rump Fat	0.38				
CED	BW	WW	YW	Milk	SC	Marb	RE	Fat	\$M	\$W	\$F	\$B
+9	+1.5	+65	+118	+28	-0.05	+0.55	+0.57	+0.056	+58	+63	+107	+151

- Cow bull
- Individual Performance: WR@94, YR@102
- Scrotal: 31.5



Lot 31

32 NA STELLAR 2121

DOB: 2/13/2022 • Reg: 20592816 • Tattoo: 2121



Sitz Stellar 726D

Mohnen Substantial 272#
SITZ Pride 200B

Larsen Stellar W14

Larsen Merle 215U#

Larsen Right Answer 211R
Larsen Merle 289S

Ellingson Accelerate 5264

Koupal Advance 28#
EA Emblynette 3361

NA Anna 014

NA Anna 716E

Hilltop Final Option 5350
NA Miss Anna 211Z#

Act BW	Act WW	Adj 205	Adj 365	%IMF	%IMF Ratio	REA	REA Ratio					
86	640	635	1272	5.85	129	10.1	91					
Dam's Production				1 - 105	Rib Fat	0.34	Rump Fat	0.39				
CED	BW	WW	YW	Milk	SC	Marb	RE	Fat	\$M	\$W	\$F	\$B
+7	+1.6	+58	+115	+36	+1.22	+0.64	+0.3	+0.042	+54	+60	+78	+124

- Suitable for use on larger heifers
- Individual Performance: WR@105, YR@104
- Scrotal: 35.5
- High %IMF



Lot 32

33

NA FOUNDATION 2205

Lot 33

DOB: 3/15/2022 • Reg: 20595745 • Tattoo: 2205



S Foundation 514#
NA Foundation 803
 NA Everelda Entense 516C

Vision Unanimous 1418#
 S Lady Ann 8384#

KG Rainmaker 9208

NA Consensus 7229 330
 NA Everelda Entense 7715
 Sitz Rainmaker 9723#
 KG Kem 6051

NA Lady 411B
 NA Miss Play On 111Y#

NA Charge On 902
 NA Miss Duke's Play 609S

Act BW	Act WW	Adj 205	Adj 365	%IMF	%IMF Ratio	REA	REA Ratio					
85	674	641	1167	3.79	87	10.2	96					
Dam's Production				4 - 96	Rib Fat	0.19	Rump Fat	0.23				
CED	BW	WW	YW	Milk	SC	Marb	RE	Fat	\$M	\$W	\$F	\$B
+2	+3.4	+60	+111	+27	+0.36	+0.47	+0.34	+0.006	+80	+56	+86	+127

- Cow bull
- Individual Performance: WR@106, YR@96
- Scrotal: 33.5



34

NA MILESTONE 2127

DOB: 2/16/2022 • Reg: 20592817 • Tattoo: 2127



S A V Sensation 5615#
Square B Milestone 7143
 Eura Elga of Conanga 9109#

S A V Registry 2831#
 S A V Blackcap May 4136
 S A V Bismarck 5682#
 Eura Cal of Conanga 56B

NA Consensus 7229 330

Connealy Consensus 7229#
 Corey A Erica 24J 558#

NA Everelda Entense 516C
 NA Everelda Entense 7715

H A Power Alliance 1025#
 CoreyA Everelda Entense 5508

Act BW	Act WW	Adj 205	Adj 365	%IMF	%IMF Ratio	REA	REA Ratio					
82	652	581	1192	4.74	105	10.3	91					
Dam's Production				5 - 98	Rib Fat	0.29	Rump Fat	0.3				
CED	BW	WW	YW	Milk	SC	Marb	RE	Fat	\$M	\$W	\$F	\$B
+10	-1.7	+40	+70	+30	+1.13	+0.25	+0.2	+0.057	+50	+48	+57	+82

- HEIFER BULL
- Individual Performance: WR@97, YR@98
- Scrotal: 37



35

NA MILESTONE 204

DOB: 1/20/2022 • Reg: 20592803 • Tattoo: 204



S A V Sensation 5615#
Square B Milestone 7143
 Eura Elga of Conanga 9109#

S A V Registry 2831#
 S A V Blackcap May 4136
 S A V Bismarck 5682#
 Eura Cal of Conanga 56B

21AR Emulation 7172

Sinclair Emulation XXP#
 21AR Blackbird 4140

NA Lovemere 0147
 NA Lovemere 526C

GDAR CJD Alliance 0714#
 NA Miss Queen JCN 017

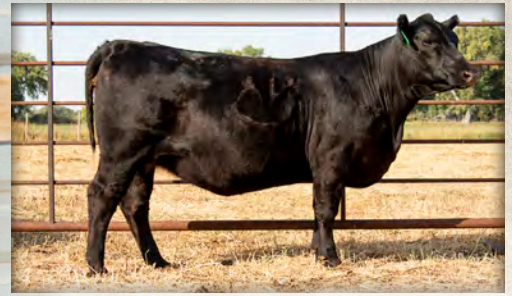
Act BW	Act WW	Adj 205	Adj 365	%IMF	%IMF Ratio	REA	REA Ratio					
91	666	635	1280	5.32	116	10.7	91					
Dam's Production				1 - 105	Rib Fat	0.23	Rump Fat	0.27				
CED	BW	WW	YW	Milk	SC	Marb	RE	Fat	\$M	\$W	\$F	\$B
+6	-0.2	+54	+104	+30	+1.18	+0.46	+0.4	+0.003	+18	+52	+91	+133

- Suitable for use on larger heifers
- Individual Performance: WR@105, YR@105
- Scrotal: 36
- High %IMF bull



“Quality is doing it right
 when no one is looking”
 - Henry Ford

Lot 36



NA Lady 943 - maternal sister to Lot 36
Sold at the 2020 NILE to
Ravellette Cattle, Philip, SD



NA Lady 521C - Dam of Lot 36

36 NA MILESTONE 2175

DOB: 3/5/2022 • Reg: 20592819 • Tattoo: 2175



S A V Sensation 5615#
S A V Blackcap May 4136
Square B Milestone 7143
Eura Elga of Conanga 9109#
S A V Bismarck 5682#
Eura Cal of Conanga 56B

GDAR CJD Alliance 0714#

NA Lady 521C

NA Miss Frontier Anna 5533

Sitz Alliance 7487
GDAR CJD Kem 8602
B/R New Frontier 095#
NA Miss Sana Anna 2205

Act BW	Act WW	Adj 205	Adj 365	%IMF	%IMF Ratio	REA	REA Ratio					
95	660	612	1226	4.65	105	10	92					
Dam's Production		5 - 105		Rib Fat	0.32	Rump Fat	0.29					
CED	BW	WW	YW	Milk	SC	Marb	RE	Fat	\$M	\$W	\$F	\$B
-5	+3.8	+72	+128	+30	+1.72	+0.26	+0.44	+0.06	+44	+61	+113	+142

- Cow bull
- Individual Performance: WR@102, YR@101
- Scrotal: 36.5



37 NA FINNEGAN 291

DOB: 2/5/2022 • Reg: 20592812 • Tattoo: 291



Connealy Finnegan
Spruce Hill Finnegan 9493
Spruce Hill 502 Rito 6304
Connealy Niobrara 5451
Black Ceyla of Conanga 0267
Hilltop Advance 4245
Spruce Hill 502 Miss Rito 434

S A V Registry 2831#

NA Elsiemere 533#

NA Elsiemere 105

Rito 707 of Ideal 3407 7075
S A V Madame Pride 0075
TC Aberdeen 759#
NA Elsiemere 903

Act BW	Act WW	Adj 205	Adj 365	%IMF	%IMF Ratio	REA	REA Ratio					
92	658	575	1162	5.08	112	11.4	99					
Dam's Production		6 - 105		Rib Fat	0.31	Rump Fat	0.32					
CED	BW	WW	YW	Milk	SC	Marb	RE	Fat	\$M	\$W	\$F	\$B
+3	+1.4	+58	+100	+21	+1.55	+0.89	+0.25	+0.32	+74	+55	+67	+124

- Cow bull
- Individual Performance: WR@96, YR@96
- Scrotal: 39
- High %IMF bull



38 NA CONSENSUS 2131

DOB: 2/17/2022 • Reg: 627034548 • Tattoo: 2131



Connealy Consensus 7229#
NA Consensus 7229 330
Corey A Erica 24J 558#

Connealy Consensus#
Blue Lilly of Conanga 16

BT Right Time 24J#
A A R Erica 2537

KG Rainmaker 9208

NA Clove Pride 329A

NA Clova Pride 653S

Sitz Rainmaker 9723#
KG Kem 6051

B/R New Design 323-311
NA Clova Pride 3205

Act BW	Act WW	Adj 205	Adj 365	%IMF	%IMF Ratio	REA	REA Ratio					
79	674	601	1036	4.84	108	11.5	103					
Dam's Production		4 - 98		Rib Fat	0.17	Rump Fat	0.32					
CED	BW	WW	YW	Milk	SC	Marb	RE	Fat	\$M	\$W	\$F	\$B
+8	+0.3	+34	+64	+29	+0.74	+0.64	+0.24	+0.16	+58	+38	+55	+102

- HEIFER BULL
- Individual Performance: WR@100, YR@85
- Scrotal: 36

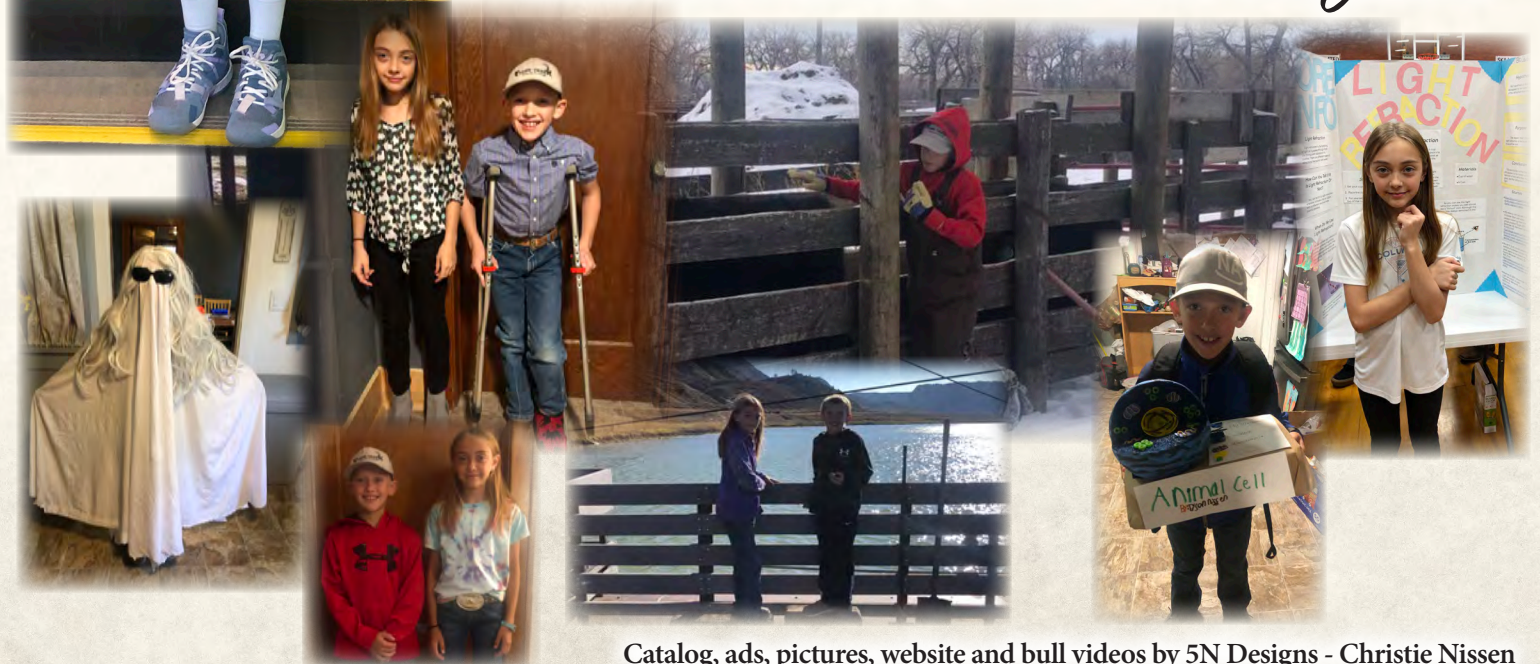


Thank you
for coming to the sale!
We appreciate your support
and value your business - we
couldn't do it without you!
See ya next year!

The mud will wash off



.. but the memories will last a lifetime

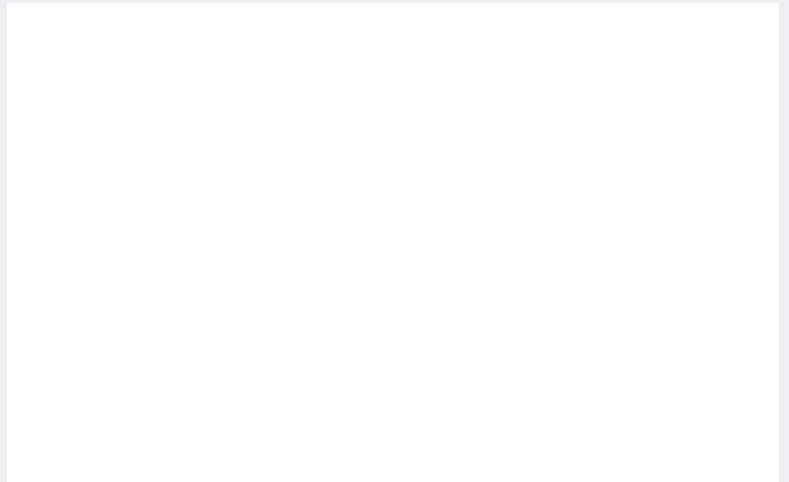




Nissen Angus Inc.
Jeff & Christie Nissen
14615 Paradise Valley Rd
Chinook, MT 59523

POSTMASTER: TIME DATED MATERIAL
RETURN SERVICE REQUESTED

PRESORTED
FIRST-CLASS MAIL
U.S. POSTAGE PAID
LivestockDirect
PERMIT NO. 29



WWW.NISSEANGUS.COM



Lot 18 - NA Stunner 2107